

116°41'00" W

116°40'00" W

116°39'00" W

116°38'00" W

WGS84 116°37'00" W

28P SAM FINK PEAK CS 06-10-2000

USE AT YOUR OWN RISK

GRIDS AT 1/4 MILE

STATE NATIONAL WILDERNESS BOUNDARY

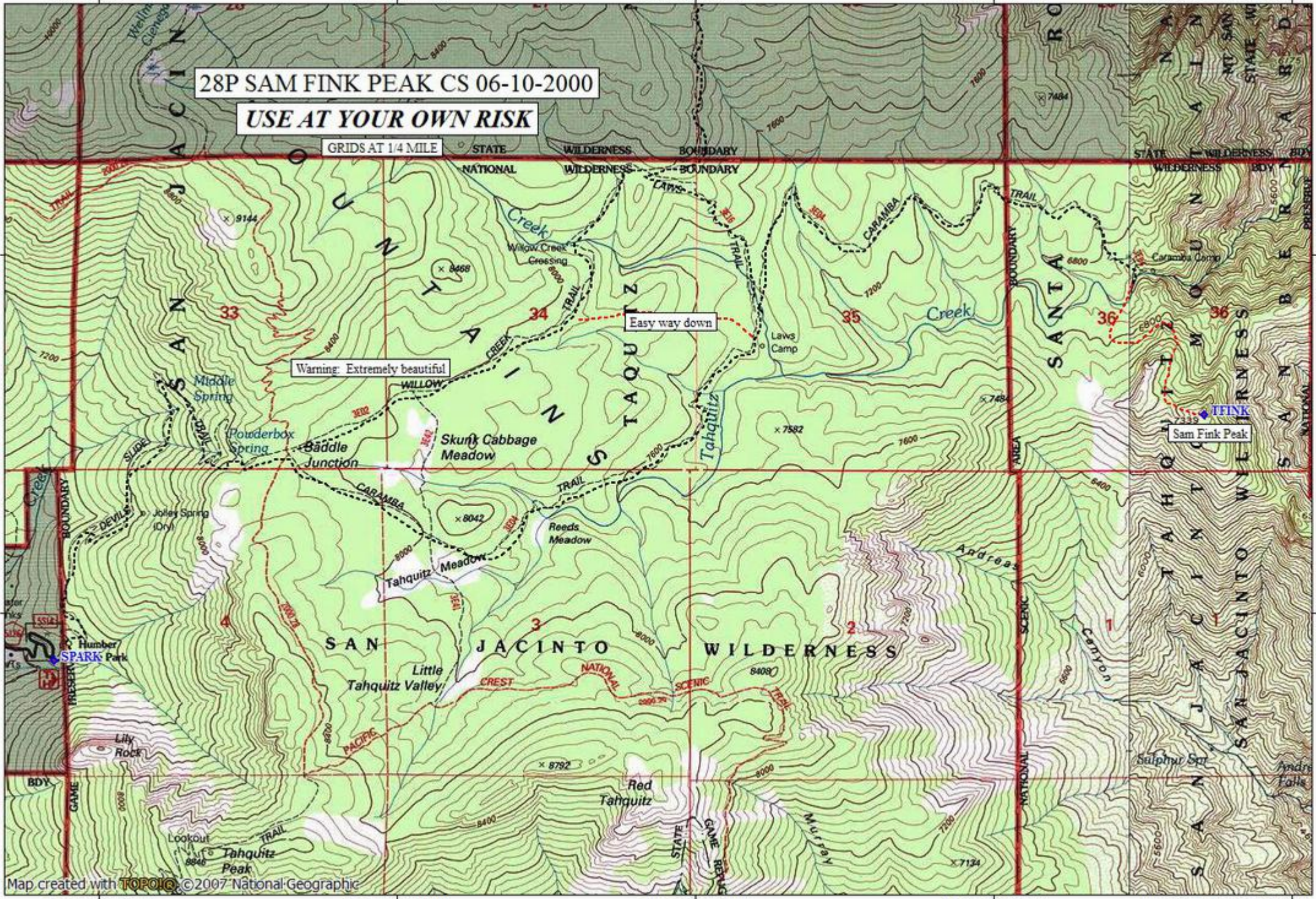
STATE NATIONAL WILDERNESS BOUNDARY

33°47'00" N

33°47'00" N

33°46'00" N

33°46'00" N



Map created with TOPO! © 2007 National Geographic

116°41'00" W

116°40'00" W

116°39'00" W

116°38'00" W

WGS84 116°37'00" W

