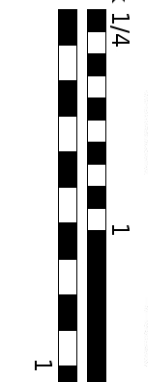
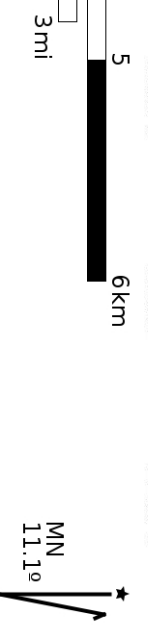
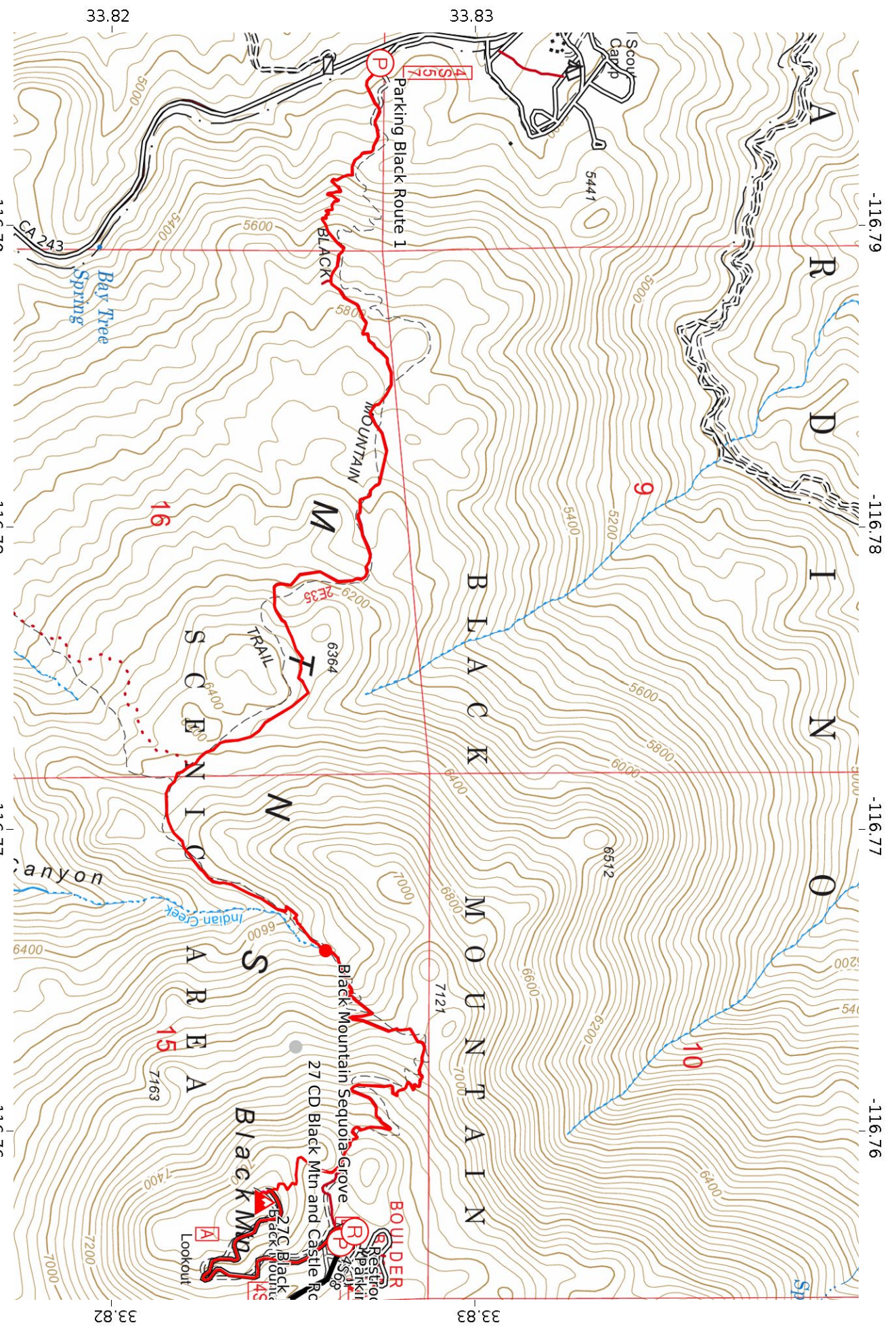


Black Mtn, Castle Rock 1/4
 WGS84
 UTM Zone 11S
CALTOPO



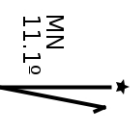
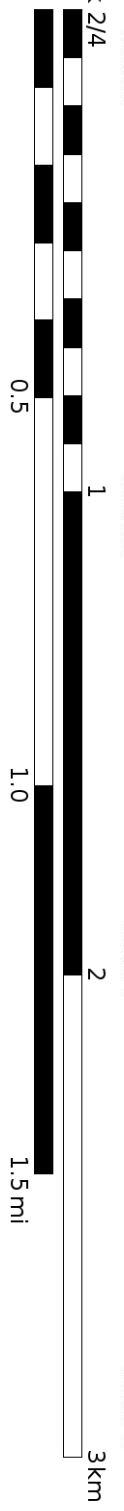
Scale 1:34166
 1 inch = 2847 feet

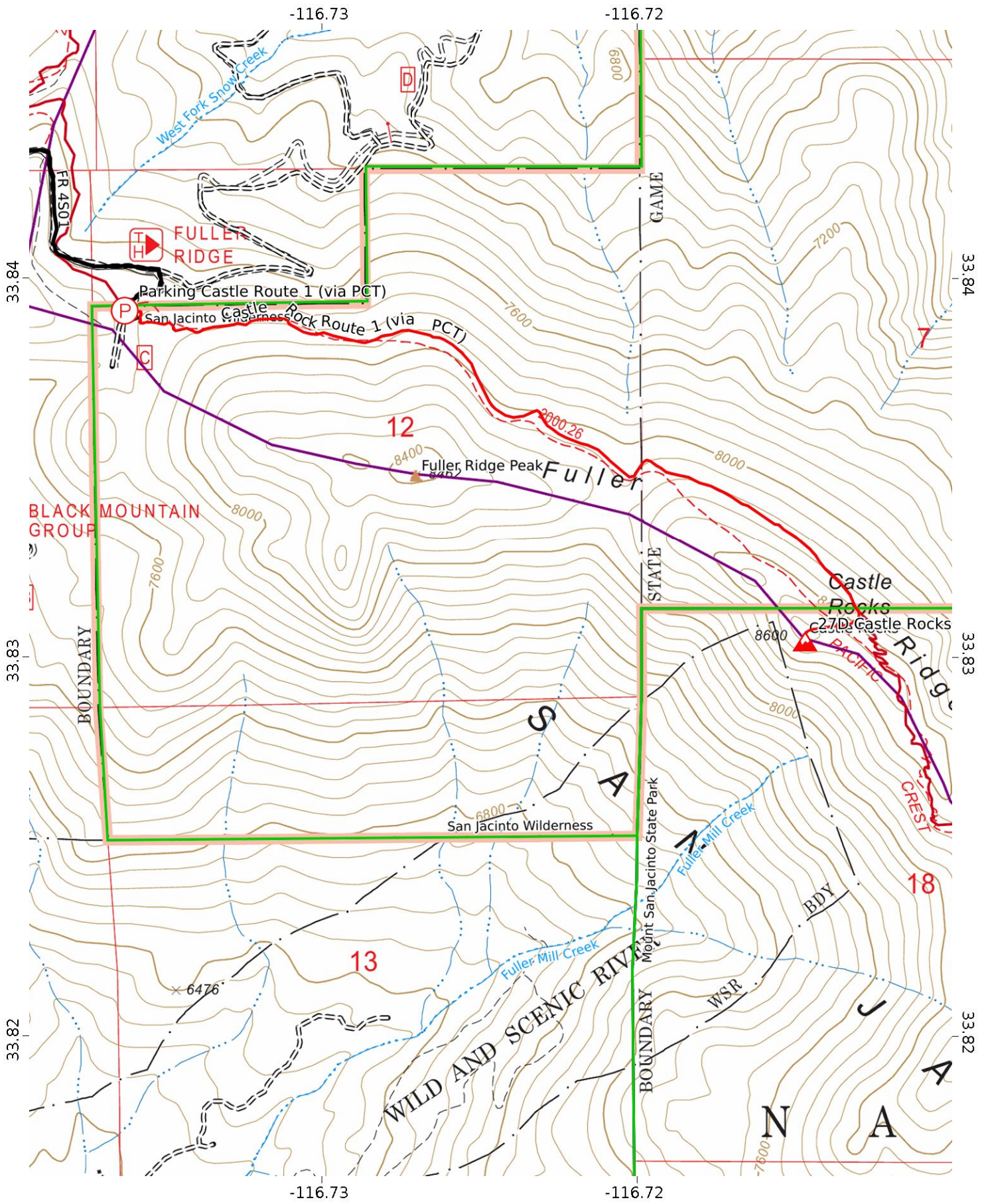




Black Mtn, Castle Rock 2/4

WGS84
UTM Zone 11S





Black Mtn, Castle Rock 3/4

WGS84

UTM Zone 11S

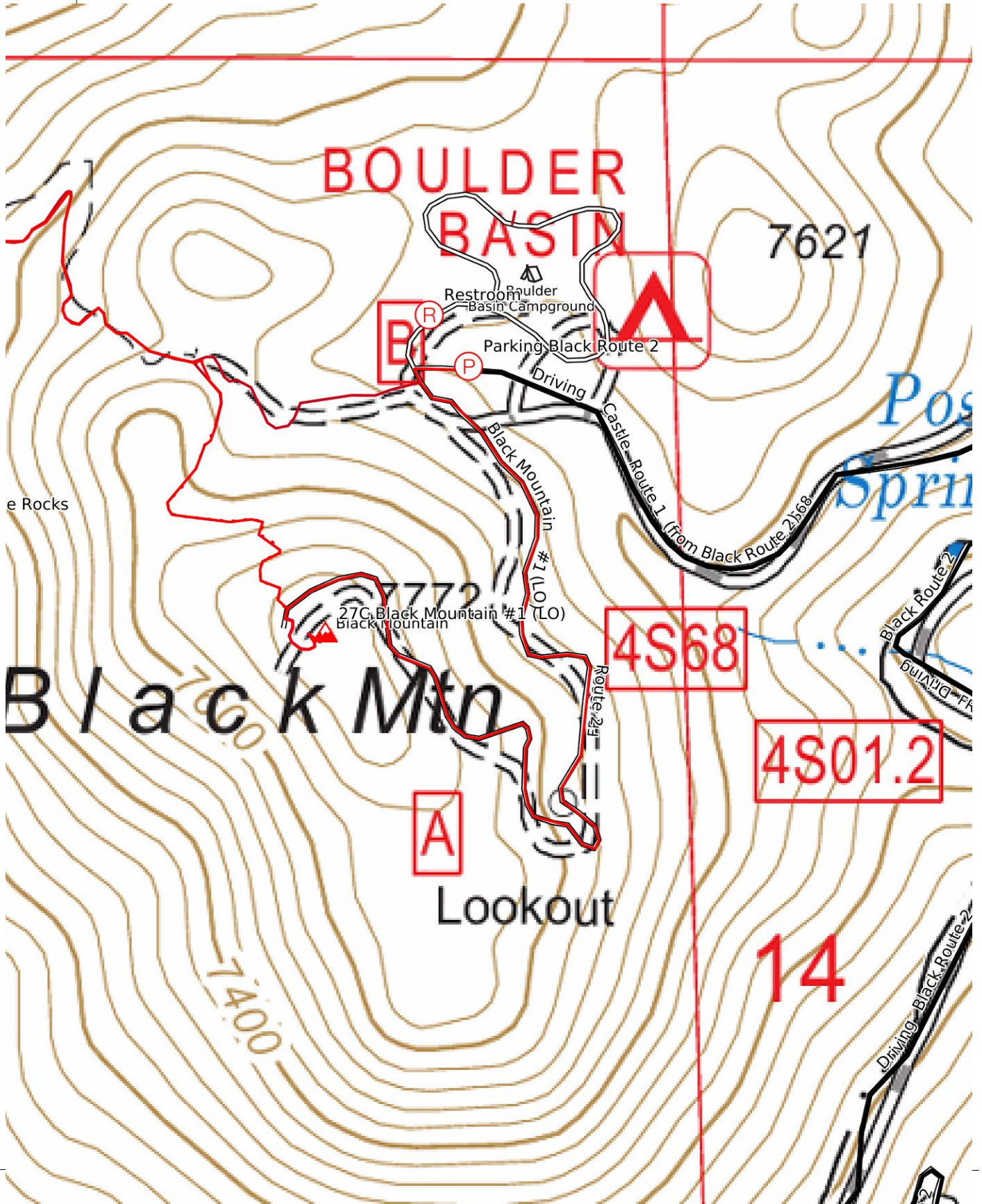


Scale 1:14724 1 inch = 1227 feet

MN 11.1°



-116.76



e Rocks

7621

BOULDER
BASIN

Restroom
Boulder
Basin Campground

Parking Black Route 2

Driving

Black Mountain

Route 2-1

Route 2-1

Route 2-1

Route 2-1

Route 2-1

Route 2-1

Route 2-1

Route 2-1

Route 2-1

Route 2-1

Route 2-1

Route 2-1

Route 2-1

Route 2-1

Route 2-1

Route 2-1

Route 2-1

Route 2-1

Route 2-1

Route 2-1

Route 2-1

27C Black Mountain #1 (LO)
Black Mountain

Black Mtn

A

Lookout

4S68

4S01.2

14

Pos
Spring

Black Route 2
Driving

Driving Black Route 2

33.82

-116.76

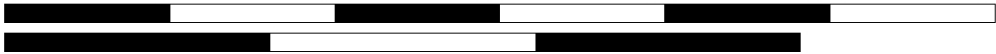
33.82

Black Mtn, Castle Rock 4/4 0.1 0.2 0.3 0.4 0.5 0.6 km

WGS84

UTM Zone 11S

CALTOPO



Scale 1:4583 1 inch = 382 feet

MN 11.1°

