

116°38.000' W

116°37.000' W

116°36.000' W

116°35.000' W

WGS84 116°34.000' W

34°19.000' N

34°19.000' N

34°18.000' N

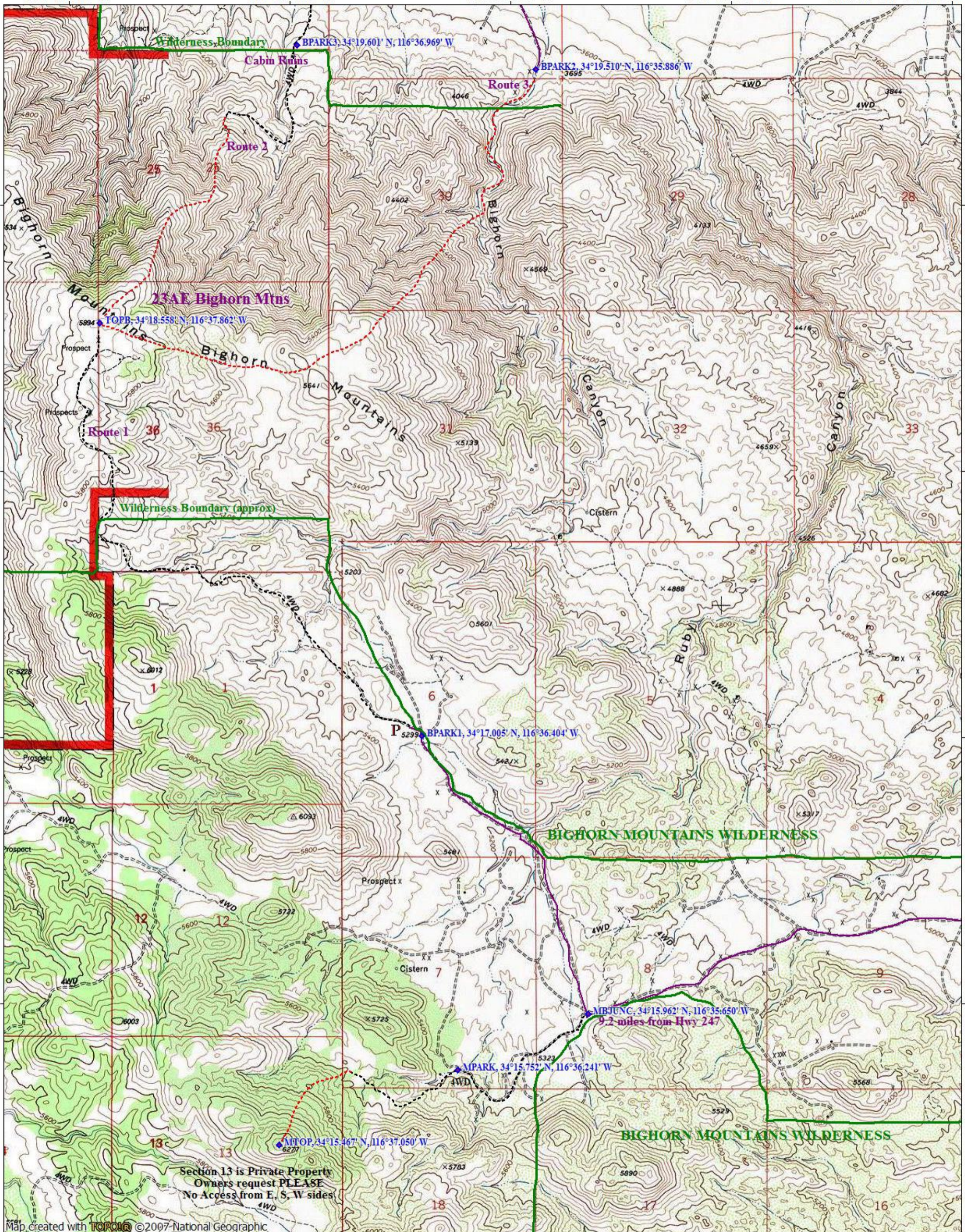
34°18.000' N

34°17.000' N

34°17.000' N

34°16.000' N

34°16.000' N



Section 13 is Private Property
 Owners request PLEASE
 No Access from E, S, W sides

116°38.000' W

116°37.000' W

116°36.000' W

116°35.000' W

WGS84 116°34.000' W

