

118°03'00" W

118°02'00" W

118°01'00" W

WGS84 118°00'00" W

34°19'00" N

34°19'00" N

34°18'00" N

34°18'00" N

34°17'00" N

34°17'00" N

11EFG SALLY VETTER MOONEY CS 12-12-2000

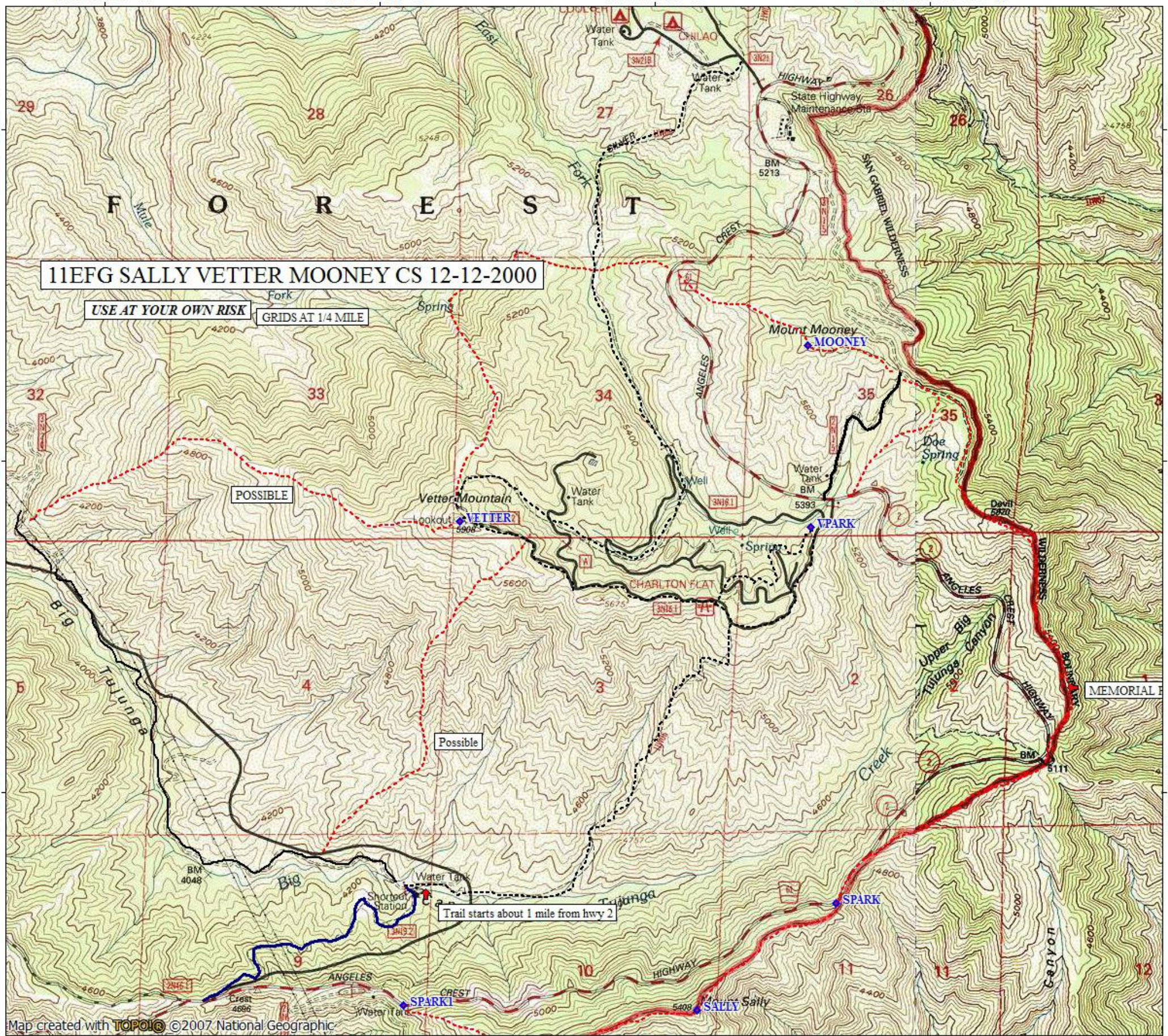
USE AT YOUR OWN RISK

GRIDS AT 1/4 MILE

POSSIBLE

Possible

Trail starts about 1 mile from hwy 2



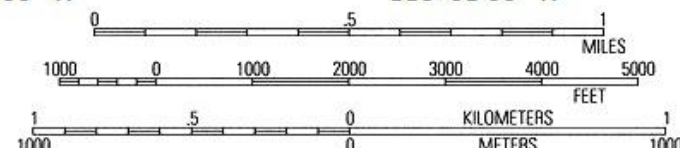
Map created with TOPOLIO © 2007 National Geographic

118°03'00" W

118°02'00" W

118°01'00" W

WGS84 118°00'00" W



TN MN  
12°

11/07/16