

118°05.000' W

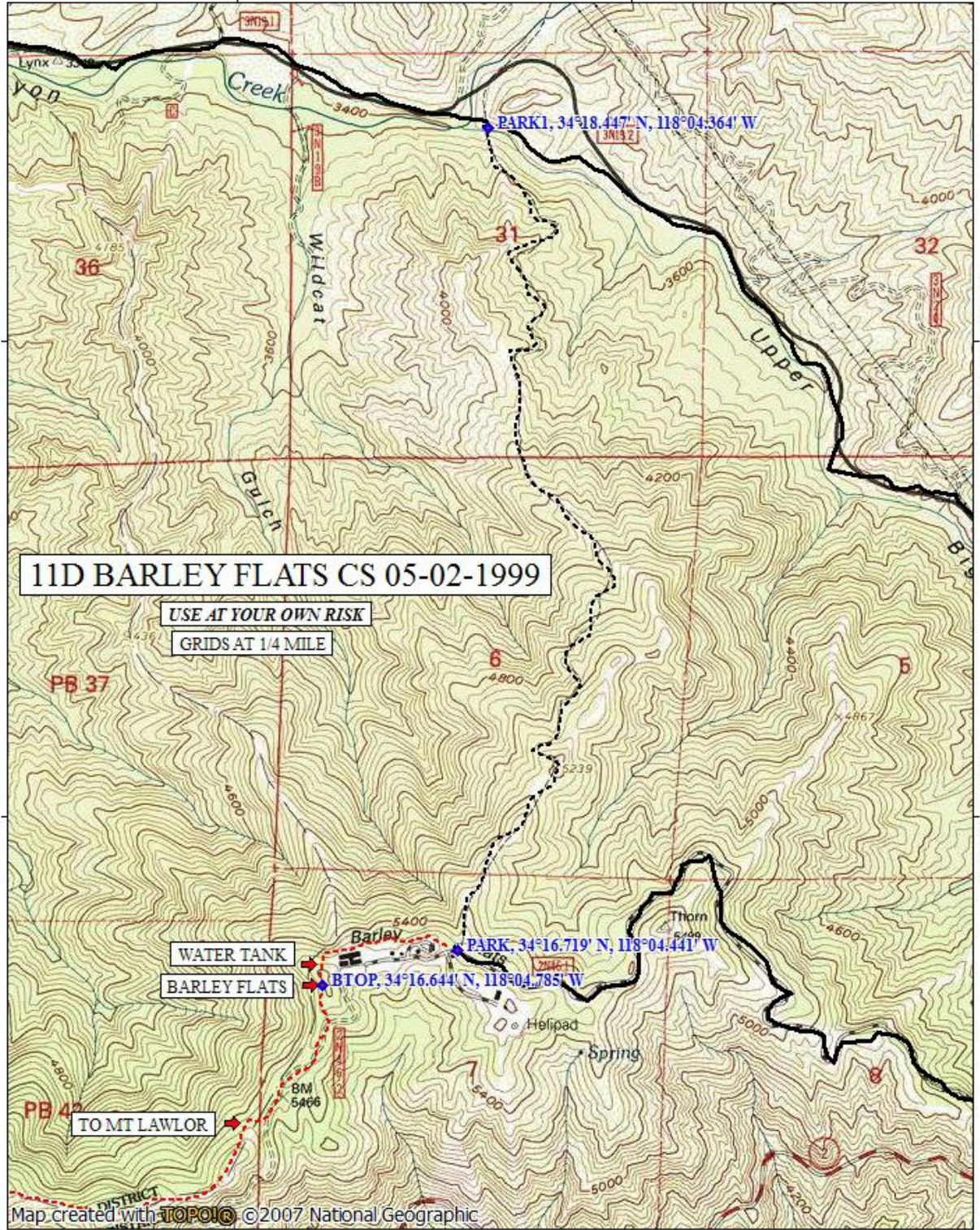
WGS84 118°04.000' W

34°18.000' N

34°18.000' N

34°17.000' N

34°17.000' N



11D BARLEY FLATS CS 05-02-1999

USE AT YOUR OWN RISK

GRIDS AT 1/4 MILE

WATER TANK

BARLEY FLATS

TO MT LAWLOR

PARK1, 34°18.447' N, 118°04.364' W

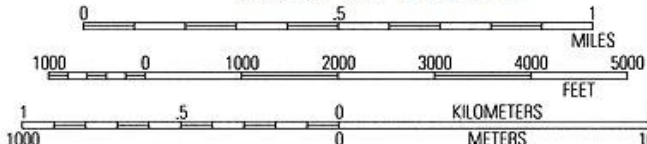
PARK, 34°16.719' N, 118°04.441' W

BTOP, 34°16.644' N, 118°04.785' W

Map created with TOPO! ©2007 National Geographic

118°05.000' W

WGS84 118°04.000' W



TN MN 12½° 11/22/14