

118°35.000' W

118°34.000' W

118°33.000' W

WGS84 118°32.000' W

34°42.000' N

34°42.000' N

34°41.000' N

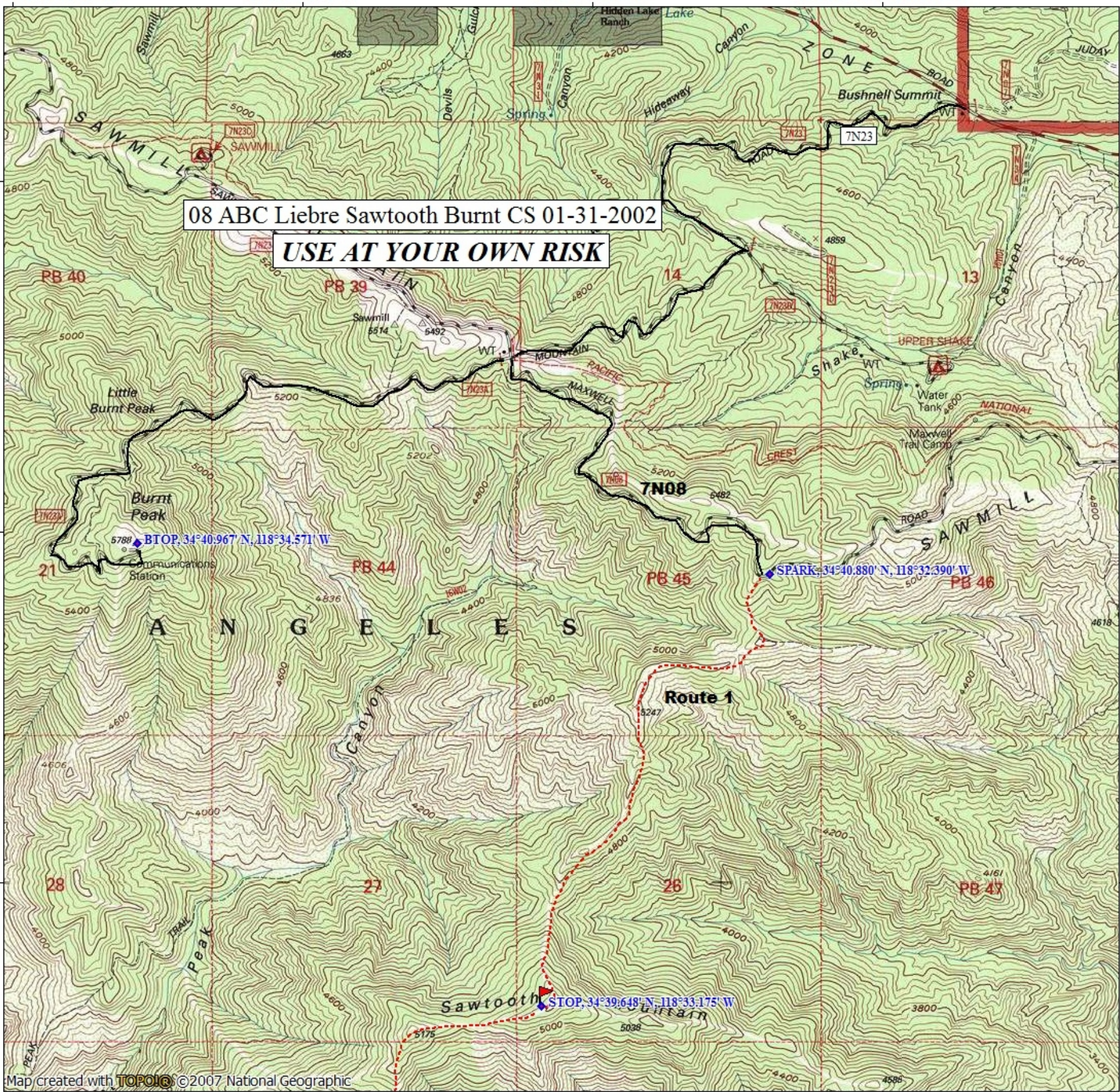
34°41.000' N

34°40.000' N

34°40.000' N

08 ABC Liebre Sawtooth Burnt CS 01-31-2002

USE AT YOUR OWN RISK



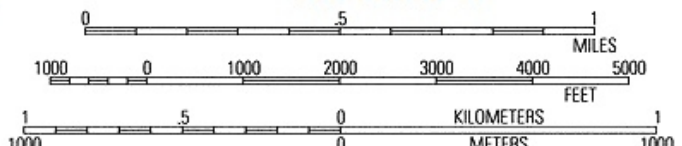
Map created with TOPO! ©2007 National Geographic

118°35.000' W

118°34.000' W

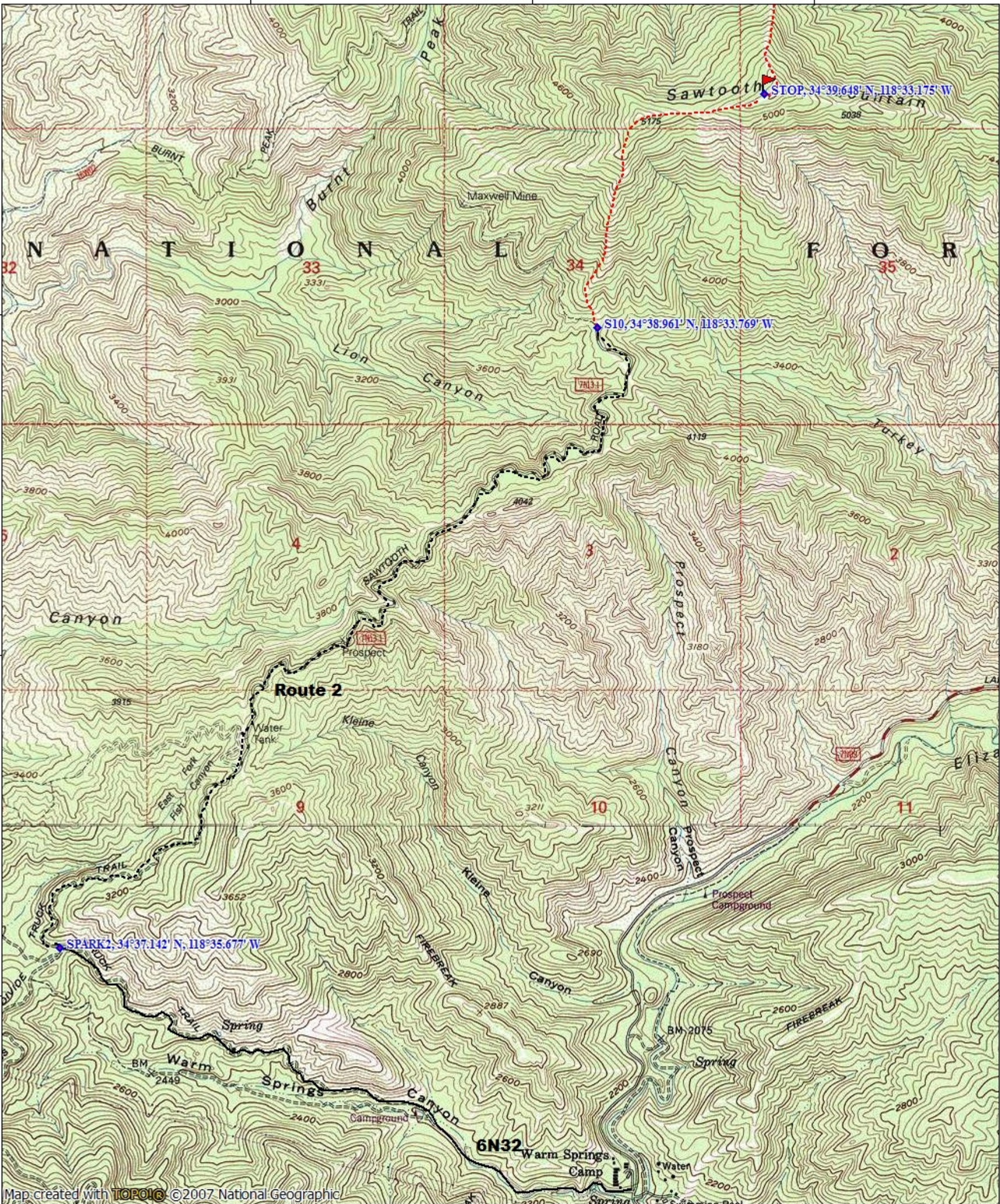
118°33.000' W

WGS84 118°32.000' W

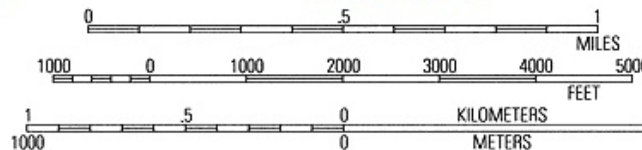


TN MN 12 1/2°

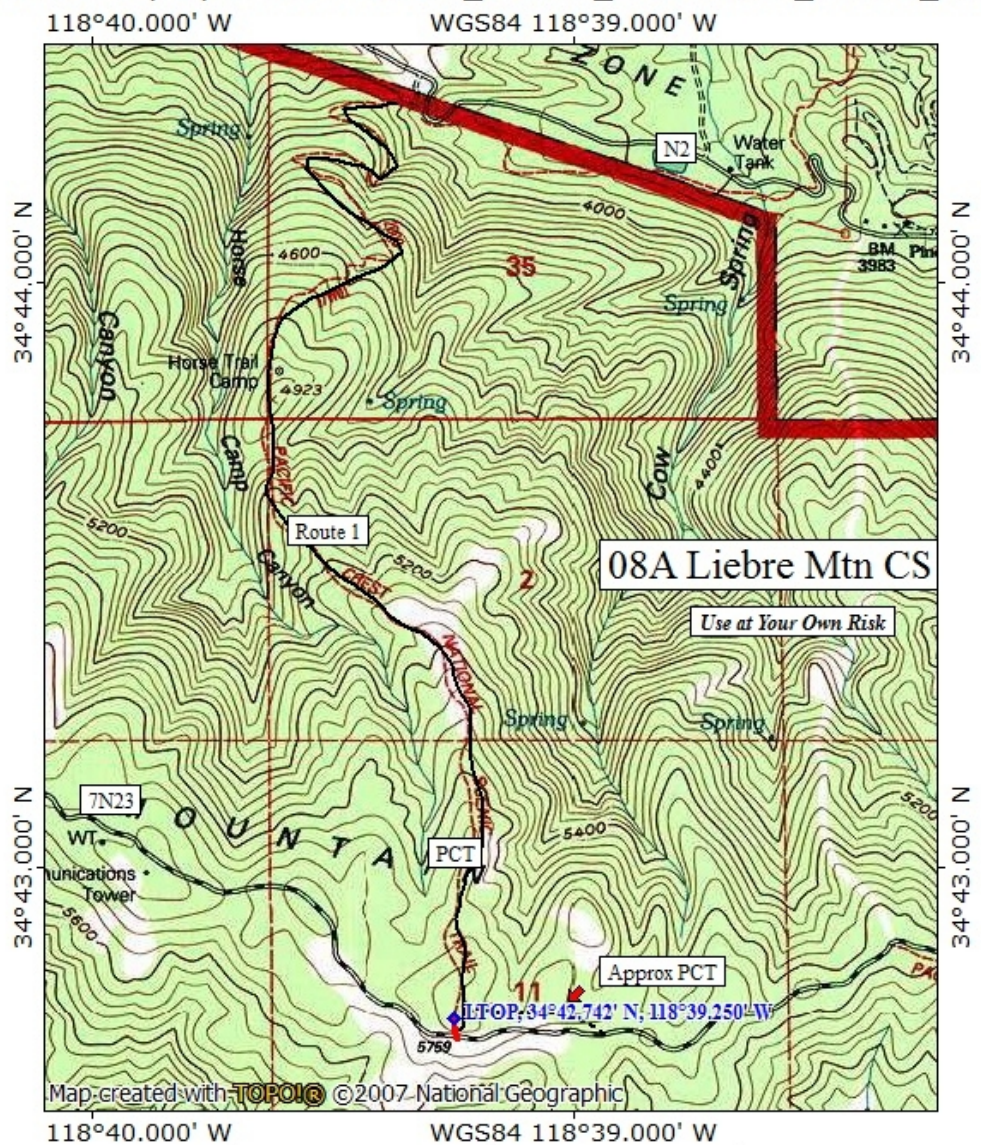
11/18/14



Map created with TOPO! ©2007 National Geographic



TN ↑ MN
12½°
11/18/14



08A Liebre Mtn CS

Use at Your Own Risk

Approx PCT

LTOP, $34^{\circ}42.742' N, 118^{\circ}39.250' W$

Map created with TOPO! © 2007 National Geographic

