

119°06.000' W

119°05.000' W

119°04.000' W

WGS84 119°03.000' W

34°44.000' N

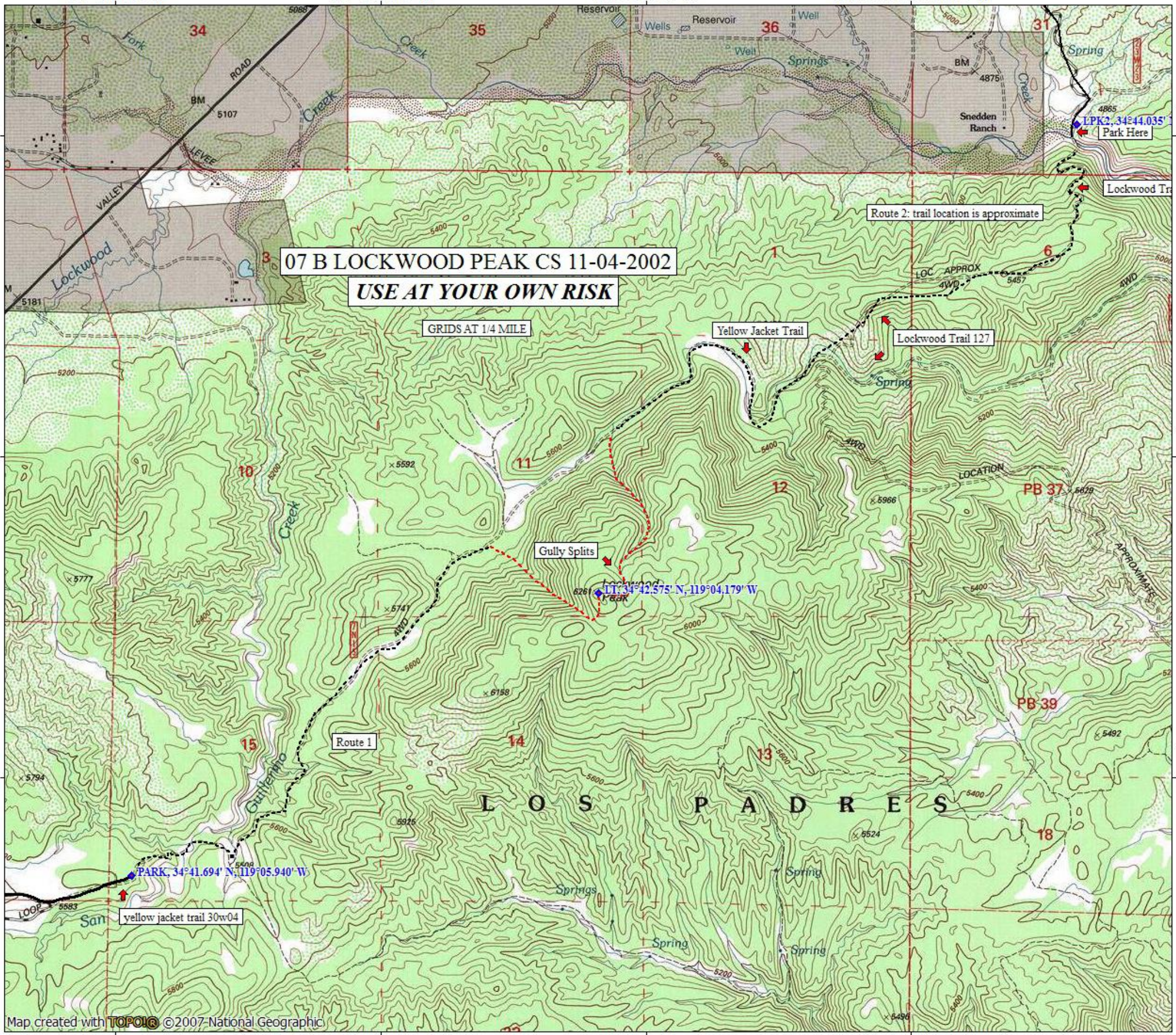
34°44.000' N

34°43.000' N

34°43.000' N

34°42.000' N

34°42.000' N



07 B LOCKWOOD PEAK CS 11-04-2002  
**USE AT YOUR OWN RISK**

GRIDS AT 1/4 MILE

Route 2: trail location is approximate

Yellow Jacket Trail

Lockwood Trail 127

Gully Splits

Route 1

yellow jacket trail 30w04

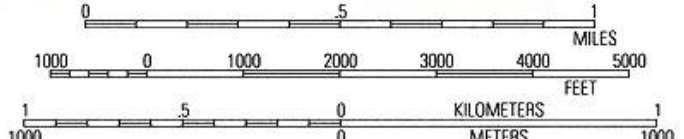
Map created with **TOPO!** ©2007-National Geographic

119°06.000' W

119°05.000' W

119°04.000' W

WGS84 119°03.000' W



TN MN  
12½°  
11/16/14