

117°37.000' W

117°36.000' W

WGS84 117°35.000' W

020 RED MTN CS 08-16-2002

USE AT YOUR OWN RISK

(GRIDS AT 1/4 MILE)

RO1, 35°22.028' N, 117°37.168' W

RPARK, 35°21.922' N, 117°35.990' W

ROUTE ONE

Has Been Done

ROUTE TWO

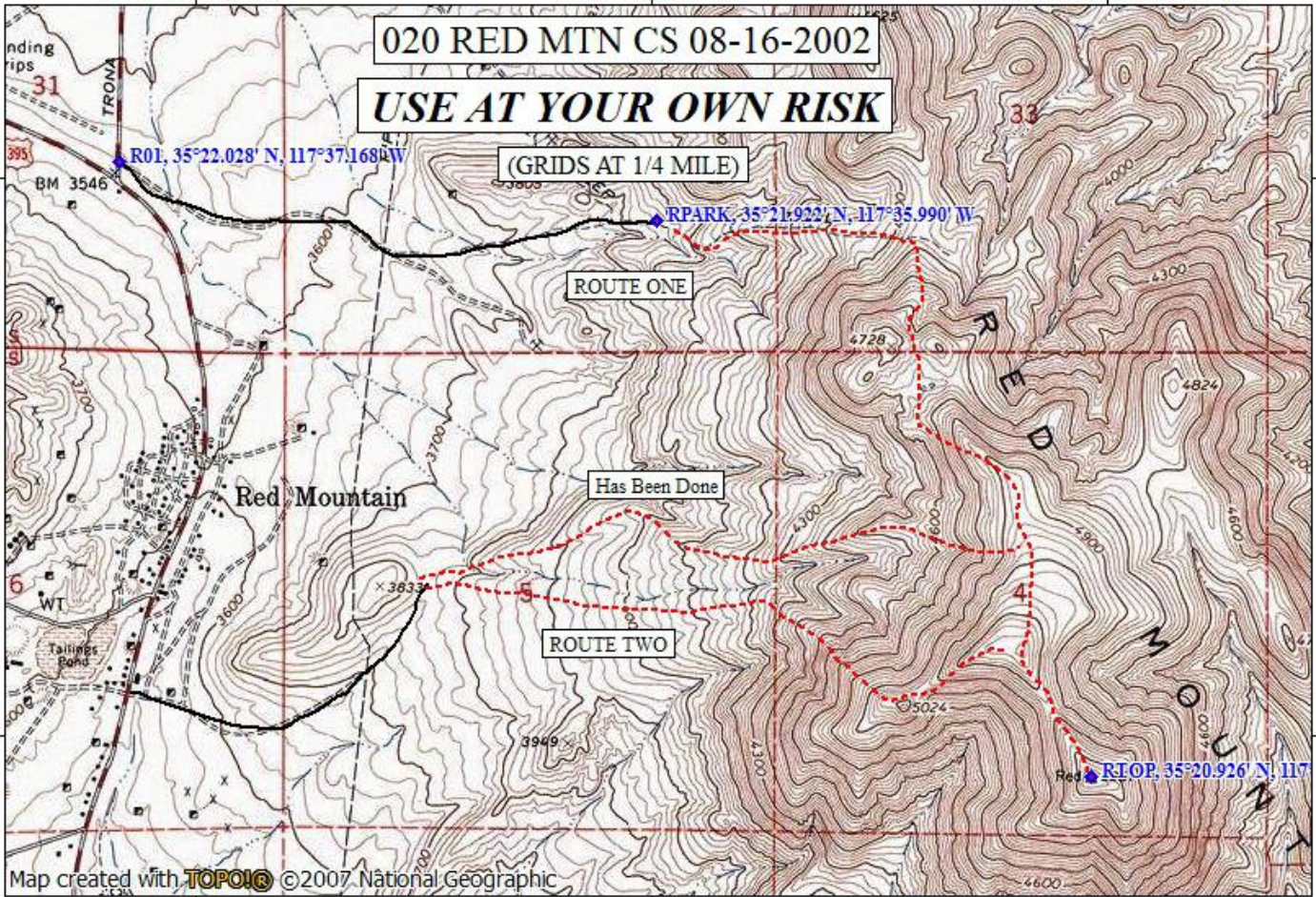
RTOP, 35°20.926' N, 117°35.000' W

35°22.000' N

35°22.000' N

35°21.000' N

35°21.000' N



Map created with TOPO! ©2007 National Geographic

117°37.000' W

117°36.000' W

WGS84 117°35.000' W

