

118°03'00" W

118°02'00" W

118°01'00" W

WGS84 118°00'00" W

35°40'00" N

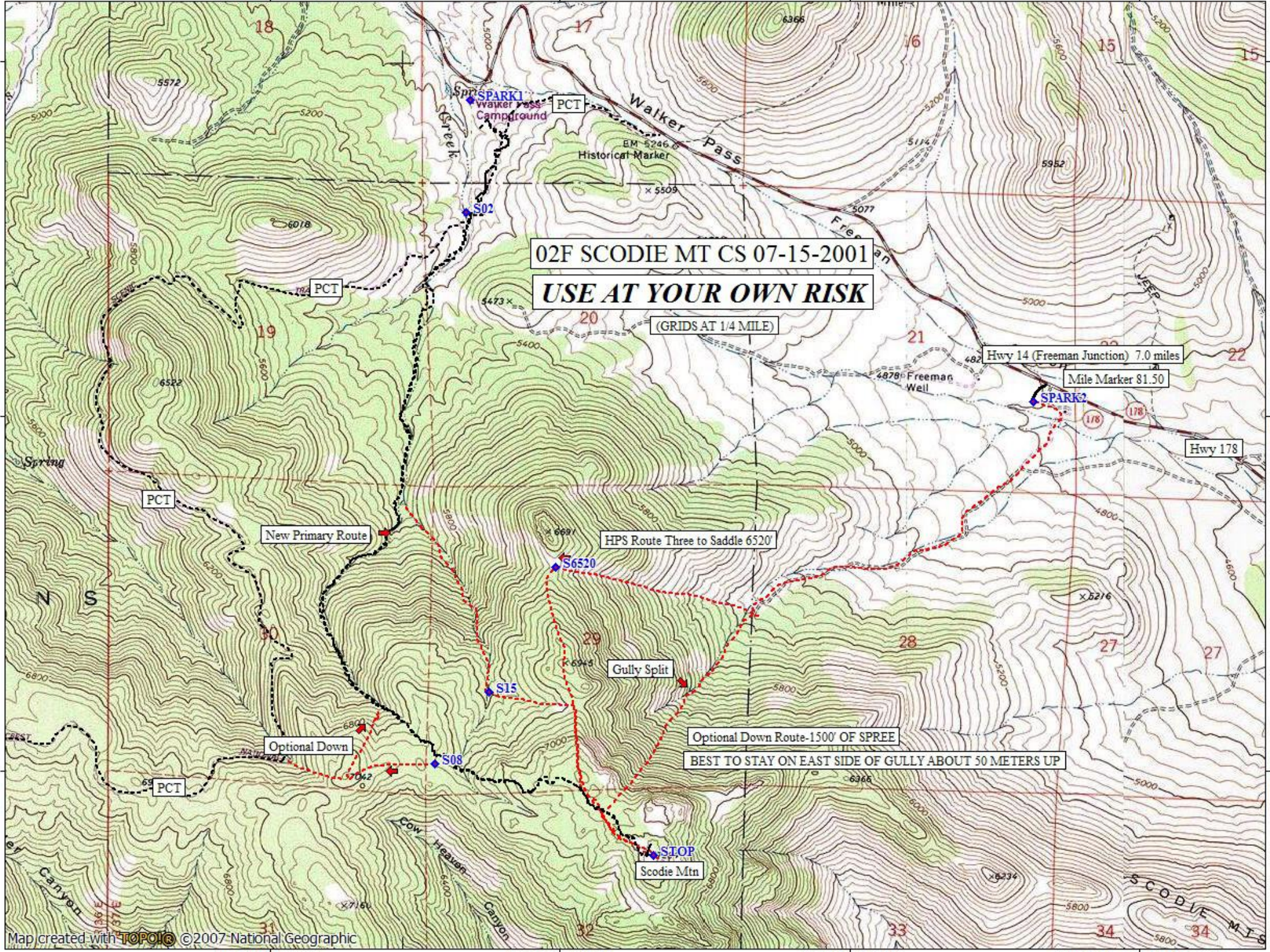
35°40'00" N

35°39'00" N

35°39'00" N

35°38'00" N

35°38'00" N



02F SCODIE MT CS 07-15-2001
USE AT YOUR OWN RISK

(GRIDS AT 1/4 MILE)

New Primary Route

HPS Route Three to Saddle 6520'

Gully Split

Optional Down Route-1500' OF SPREE

BEST TO STAY ON EAST SIDE OF GULLY ABOUT 50 METERS UP

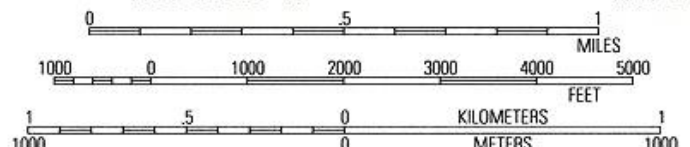
Map created with **TOPOLIC** ©2007 National Geographic

118°03'00" W

118°02'00" W

118°01'00" W

WGS84 118°00'00" W



TN MN
12 1/2°

04/27/17