

TOPO! map printed on 11/16/14 from "06M_HILDRETH_PEAK_cs01-06-1999.tpo"

119°36.000' W 119°34.000' W 119°32.000' W 119°30.000' W WGS84 119°27.000' W

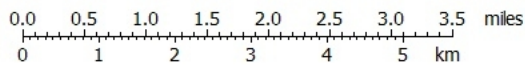


34°35.000' N

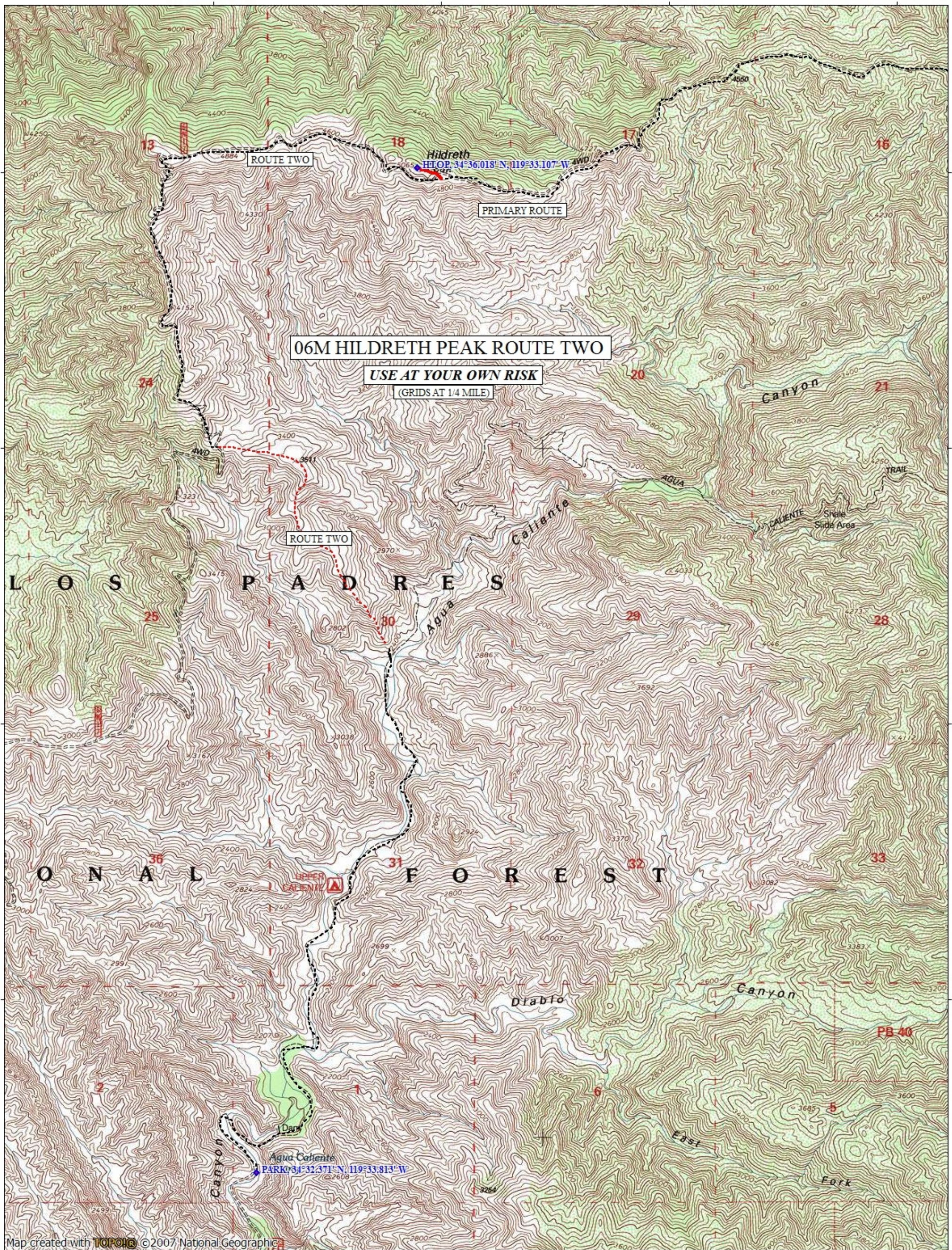
34°33.000' N

34°35.000' N

34°33.000' N



TN* MN
12½°
11/16/14



Map created with TOPO! ©2007 National Geographic

119°33.000' W

119°32.000' W

119°31.000' W

119°30.000' W

119°29.000' W

WGS84 119°28.000' W

34°37.000' N

34°36.000' N

34°35.000' N

34°37.000' N

34°36.000' N

34°35.000' N

06M HILDRETH PEAK CS 01-06-1999

USE AT YOUR OWN RISK

GRIDS AT 1/4 MILE

4WD TO HWY 33

Three
HPARK, 34°36.334' N, 119°30.000' W

TO OLD MAN MTN

ROUTE TWO

Hildreth

HIOP, 34°36.018' N, 119°33.107' W

PRIMARY ROUTE

06M HILDRETH PEAK ROUTE TWO

USE AT YOUR OWN RISK

GRIDS AT 1/4 MILE

ROUTE TWO

A D R E S

Map created with TOPO! © 2007 National Geographic

119°33.000' W

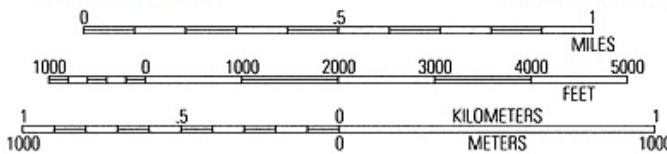
119°32.000' W

119°31.000' W

119°30.000' W

119°29.000' W

WGS84 119°28.000' W



TN MN
12½°
11/16/14