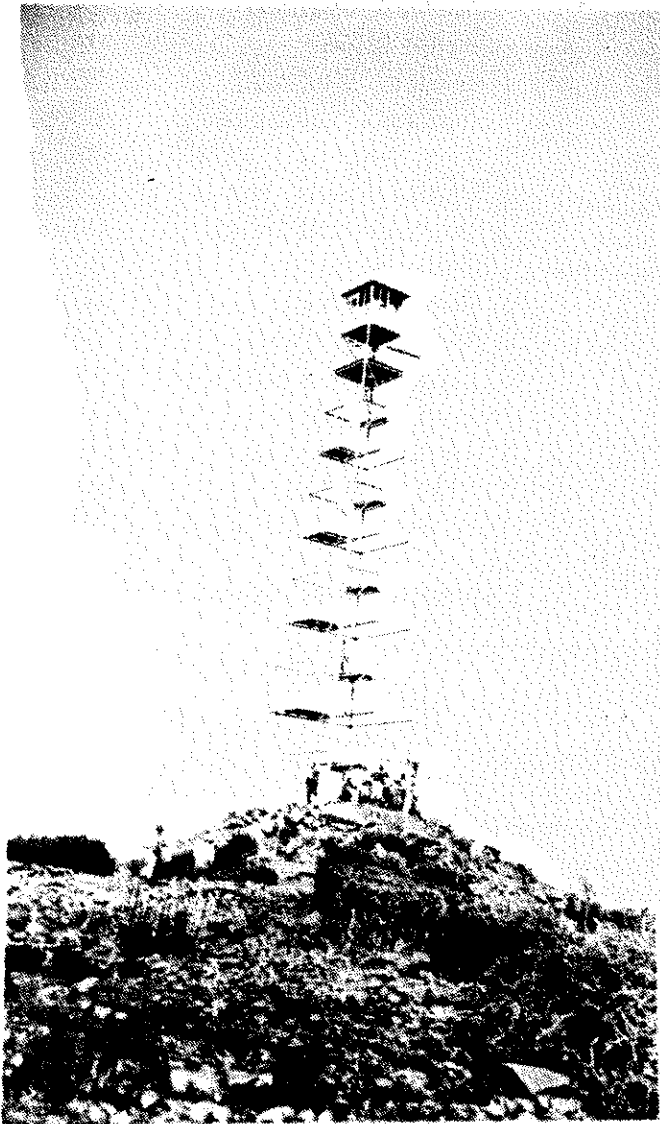


# Hundred Peaks Lookout



## Mystery Lookout

by John Robinson



This was the first of two fire lookouts on this peak. It was erected around 1914 (I can't find the exact year) and disassembled in the mid-1930's when the California Conservation Corps built a new 25 foot steel lookout tower. 70 feet high, this was the tallest of any lookout in Southern California, possibly in the state.

You may find the answer on page 3

## TOPO MAPS: How to Find Them

by Bill Oliver

Peak climbing and topo maps go hand-in-hand. A crux move, however, may be how to get the latter in hand. We will review here some of the available resources. First, if you're mostly interested in research and can settle for a xerox copy, then check out the library:

**UCLA: The Henry Bruman Map Library,**  
Hours: Mon—Fri, 10 am—3 pm. 213/825-3526

Did you know that this collection of over three quarters of a million maps is the largest in academia? It is surpassed, in fact, only by three government collections in Washington, DC. Located in the basement of Bunche Hall and open to the public, the library has a map to every place, both real and imaginable. Of particular interest to us is the fact that it is a depository for all US Geological Survey topo maps for the **entire** country. (yes, folks, every 7.5 and 15 min. topo!) Additional pluses are the facts that the staff is very user-friendly and that the topos are directly accessible for browsing. Maps cannot be checked out, but a large-format (up to 11"x17") copying machine is available for only a dime a shot. On the downside, campus parking is \$4. Enter from Hilgard at Wyton or Westholme.

(Continued on page 12)

### Inside the *Lookout*

Congratulations .....	2
Management Committee Reports .....	3
Footnotes .....	7
Topo Maps: How To Find Them .....	13
Trail Updates .....	14
HPS Sign In—Sign Out Sheet .....	16
Advance Schedule .....	17
Latest Editions of Writeups and Maps ..	19
Hundred Peaks Membership List .....	21

Compiled by Alan Coles and Charlie Knapke

## List Completions

—None—

### 200 Peaks Bar

#282 ❖ Russell Glavis ❖ Brush Mountain ❖ 10/30/90

### 100 Peaks Emblem

#845 ❖ Claire McQuellan

### Path Finder Emblem

—None—

## HPS Leadership: 100 Peaks

These are temporarily not numbered pending research on retroactive qualifications. All qualifying leaders (including inactive or deceased leaders) will be listed each month in order by date until the research is completed.

John Backus

Lew Amack ❖ Shay Mtn ❖ 6/15/85

Bob Thompson ❖ Folly ❖ 9/7/85

Luella Fickle ❖ Cone Pk ❖ 10/5/85

Jack Trager ❖ Butler Pk ❖ 9/5/86

Patty Kline ❖ San Ysidro Mtn ❖ 12/2/90

Gordon Lindberg ❖ Cross Mountain ❖ 01/12/91

Frank Dobos ❖ Little Cahuilla ❖ 1/22/91

## Milestones

by Charlie Knapke

Carolyn Croker	05/01
Walton Kabler	05/02
Tina Stephens	05/02
Tom Armbruster	05/07
George F. Smith	05/09
Mark T. Allison	05/11
Allen Holden	05/22
Gail W. Hanna	05/25
Michael Graziano	05/28
Jorg Angehrn	05/30
David Eisenberg	06/05
Walter Studhalter	06/06
John Strauch	06/06
Jim Fujimoto	06/07
Monalisa Ward	06/10
Robert N. Wheatley	06/15
Dan Richter	06/15
Laren Jacobsen	06/15
Wynne Benti	06/19
Katherine Donaldson	06/23

## Social Calendar

by Joe Young

**May 9: PEAKBAGGER'S SOCIAL MEETING:** Charles Thomas of Outward Bound Adventures presents a program about his organization.

**June 13: PEAKBAGGER'S SOCIAL MEETING:** Alice and Jack Goldberg present a program about their recent mountain biking trip in southern China.

**July 11: PEAKBAGGER'S SOCIAL MEETING:** Ruth Dobos presents Cave Paintings of the canyons of the Sierra de San Francisco in central Baja. Ruth descended 3000' cliffs to view one of the finest examples of ancient rock art in the world.

**August 8: PEAKBAGGER'S SOCIAL MEETING:** Annual HPS pot luck bar-b-que. Plates, utensils, charcoal supplied. Bring necessary condiments, other implements.

**September 12: PEAKBAGGER'S SOCIAL MEETING:** Shirley Akawie presents a program about her photo safari in Kenya and Tanzania.

**October 5-6: OKTOBERFEST:** Join us for a weekend of hiking, food, refreshments, entertainment, contests, and dancing at this traditional HPS event at Harwood Lodge and the adjacent Zen Center. Limited, reserve early. [See the July, August *Lookout* for more details. HPS members send SASE, check for \$20 with Sierra Club number (\$23 non-members) to Nami Brown, Overseer.

## New Members

Maggie Singleton

Brent Mercer

Walter Studhalter

Lars Lae Evensen

Benjamin Sheldon

Willis A. Thurston

Philip (Greg) Jones

Pam Cloutier

Leila Weir



**Chairman's Corner**

Roadhead Talk  
by Ron Jones

Sometimes in our enthusiasm to climb our peaks, we sometimes get a little careless in following the rules set by the Forest Service, the BLM, etc. It is important to make every effort to know and abide by these rules in order to maintain the good reputation of the Sierra Club generally and in the outings program of the Hundred Peaks Section especially.

One area of our activity which has bothered me is the desire of some to continue to drive some of those peaks which we historically used to be able to drive but which are now closed areas. These come about because of private land (native American Reservations or individual) ownership, Fire Closures, and other seasonal or permanent closures by the Forest Service or closures to vehicles for any reason such as Areas of Critical Environmental Concerns—Wilderness Study areas, etc.

An example is the driving of vehicles beyond established corridors for them on peaks such as Stewart Mtn—you must not drive beyond the gate in the saddle on the west side of the peak. On Black Mtn #6 in the Red Rock Canyon area, do not drive up the broad plateau to the water guzzler. In fact, the BLM has asked for a DPS work party to better mark access boundaries on this HPS peak. There is already some damage by illegal ORV use in these heavily used areas and having the HPS contribute to it only lessens all efforts to reduce the destruction in this archaeological and botanical sensitive area.

I have asked Brent Washburne to note these closed areas in our peak guides. Basically, we are a hiking Section and we should leave back road driving to the Back Road Explorers Committee. Please take care to acquaint yourselves with the rules.



HAPPY TRAILS

**Mystery Lookout**  
Santiago Peak

**Outings Report**

by Patty Kline

We have 82 outings listed in the upcoming July through October Schedule #257. This is great for the HPS to have what is probably a record number of outings. I thank all the leaders who volunteered.

The leader with the most days scheduled is David Eisenberg with 24. Frank Goodykoontz followed closely with 17 days, and tied for 3rd are Ruth and Frank Dobos with 11 days. It is interesting to note that the leader with the most peaks led is David Eisenberg again with 73, Frank Goodykoontz coming in 2nd with 53 and Charlie Knapke 3rd with 38. (See the detailed report on leaders and peaks on pages 17 & 18.) At the next banquet, recognition will be given to the top 10 individuals with the most days led.

Again a special thank you to all our wonderful leaders who sent me write-ups for the July through October Schedule.

<b>1991 HPS</b>	
<b>Elected &amp; Ex-Officio Members of the Management Committee and Standing Committee Appointees</b>	
<b>Voting</b>	
Chair	Ron Jones
Vice Chair, Schedule, Leadership & Safety Chair, & Mountain Records	Patty Kline
Secretary, Membership, & Chapter Administration	Jon Sheldon
Treasurer/Membership	Alan Coles
Chapter Council Representative	Tom Armbruster
Programs	Joe Young
Past Chair	Stag Brown
<b>Non-Voting Ex-Officio</b>	
Membership & Adopt a Trail	Charlie Knapke
Conservation	Rodger Maxwell
<b>Appointed Committees, Non-Voting</b>	
Mountain Records	Brent Washburne
Peak Guide Mailer	Bob Thompson
List Compiler	Bill T. Russell
Lookout Editor	David Eisenberg
Lookout Mailer	Julie Rush
To be determined:	
<b>Merchandise Seller</b>	
Chair, Nominating Committee	
Chair, Elections Committee	
Chair, Awards Committee	

## Up to the Minutes

by Jon Sheldon

Synopsis of the February 14, March 11, and March 14, 1991 Management Committee Meetings. (For a complete copy of the Minutes send a business-size SASE to Jon Sheldon.)

1. About 150 people attended the banquet, the 3rd largest ever. Reservations have been made for Saturday 1/18/92 at Taix.
2. The Chapter and the HPS will have to pay sales tax starting in 1991. This will cover items such as T-shirts, pins, mugs and other merchandise. The Chapter will provide a resale license to the HPS.
3. Management Committee members should provide the Treasurer with anticipated budget needs for 1991.
4. The sale price of inventory items will be adjusted to reflect mailing costs.
5. National will be formulating leader requirements.
6. In preparing the latest By-Laws incorporating the 1990 ballot propositions, it was noted that a discrepancy exists between the motion regarding the changes in section 6.4d (1000' gain between peaks) and the 1989 by-laws. Tom Armbruster will check his records to see if he can find a copy of the 1989 ballot which will show what the membership actually voted on.
7. Ron Jones checked with Paul Lipsohn regarding activity to name a peak after the late John Backus. Paul reports no activity.
8. Patty Kline reported that 82 outings have been submitted for the July 5-October 1991 schedule.
9. The USFS contact for our adopted trail (Haines Cyn Trail to Mt. Lukens) has moved out of the area. A new contact will be made so we can continue our work.
10. Brent Washburne noted that the HPS Peak List dated February 1991 shows that Peak II was renamed to Five Fingers in accordance with the latest USGS topo. To provide continuity it was voted that the peak be referred to as "Five Fingers (Aquila Peak)" for a few years.
11. To provide consistency between the Peak List and the Chapter Schedule it was voted that the "Secretary shall prepare an updated description of the Section's recognition of the Peak Accomplishments to appear in the Schedule.
12. Brent Washburne reported on his activities. He has personally explored new routes up some of our more troublesome peaks: Black #3, Cone and Bare. Ron Jones and Alan Coles both stressed that the old route to Bare which goes past a shooting area be discouraged in the interest of safety.
13. George Pfeiffer has expressed an interest in researching the legality of accessing peaks on "private property".
14. Joe Young made the following recommendations for Oktoberfest 1991:
  - a. The Zen Center be reserved for overflow accommodations and their jacuzzi.
  - b. The cost for the Zen Center (\$300) be allocated in the general ticket cost to simplify record keeping.
  - c. Live entertainment in the form of an accordionist be provided.
  - d. The cost per ticket should be \$20.
  - e. Trip leaders not be given free tickets as has been past practice. This is because there will be 16 leaders and the cost of freebies is prohibitive.
 All were approved
15. We received \$7 from National in the form of FRIP rebates.
16. Alan Coles's projected 1991 budget shows a \$1,600 loss by year-end. Various measures to cut expenses and/or increase revenues were discussed. None were adopted.
17. Criteria for Section Awards: Joe Young distributed a prototype. Discussion was deferred to the next meeting.
18. Leadership Emblem: Tom Armbruster reported that he has searched Chapter Schedules through 1960 in an attempt to determine if any leaders are eligible for retroactive recognition. He will complete his report by the April meeting.
19. Seven motions were made by the Treasurer. Five were approved.
  - a. "The following responsibilities now handled by the Treasurer will henceforth be done by the mentioned committee member:
    - Reserving the general meeting facility by Programs.
    - Peak List selling and mailing by the Peak Guide Mailer.
    - Peak Accomplishments by the Membership Chair. (Notification still to be sent to the Treasurer).
    - Selling of HPS merchandise by a newly designated appointed person.
  - b. "The Management Committee recommends that the Treasurer will prepare a budget for the following year no later than the October Management Committee meeting."
  - c. "The 3 year limit on renewal to the Lookout will be lifted for any individual who donates an equal or greater amount that the subscription rate for the indicated number of years."
  - d. "The price of the Pathfinder pin will be raised from \$10 to \$15."
  - e. An offer of 2 mugs for the price of 1 will be allowed starting immediately.
20. Charlie Knapke suggested that the HPS send greeting cards to individuals (such as private property owners) who help the Section. This idea was met with enthusiasm. Charlie will work out the details.

The next *Lookout* deadline is June 1, 1991. Send articles, letters, photos, trail updates, and columns to the Editor.

**HPS Income Statement**

February 5 — March 31, 1991  
by Alan Coles

<b>Income:</b>	<b>February</b>	<b>March</b>	<b>Y.T.D</b>
Membership	953.00	611.00	2,672.00
Merchandise	88.00	188.35	840.05
Peak Guides	403.60	493.50	2,097.40
Donations	17.10	108.75	189.10
Banquet			3,070.00
Oktoberfest			1,126.00
Interest			22.42
Miscellaneous			250.70
<b>Totals</b>	<b>1,461.70</b>	<b>1,408.60</b>	<b>8,859.07</b>
<b>Expenses:</b>			
Lookout	705.56		1,891.32
General Meetings	31.76	17.53	299.75
Merchandise	887.14		894.64
Mountain Records	152.23	181.04	333.27
Peak Guides	682.38	203.73	1,545.38
Management Committee	185.30	52.81	577.39
Banquet	484.28		3,244.84
Oktoberfest			1,711.58
Bank Fees	8.60		169.00
Special Projects			169.00
Miscellaneous			140.36
<b>Totals</b>	<b>3,137.25</b>	<b>455.11</b>	<b>1,096.03</b>
<b>Adjusted Income</b>	<b>(1,675.55)</b>	<b>953.49</b>	<b>(638.36)</b>
<b>Cash Balances</b>			
Savings	789.93		
Checking	2,069.77		
Cash	47.50		
<b>Total</b>	<b>2907.20</b>		

Ron said that he has cast minority votes against the Griffith Park Hikes having this exception.

The exception has been granted as well to other groups leading regular hikes over the same routes. There have been no written complaints about other groups. While there have been verbal reports of problems, Ron stressed that the Safety Committee cannot do anything unless the report is submitted in writing.

The Council took no formal action. Had I been more experienced, I would have taken the initiative and made a motion to capture the sense of the meeting in a resolution. But as it was, Ron left with his own idea of what went on. (His idea of what went on did match mine: I saw his cogent report on the Council meeting to the Safety Committee.)

**March Meeting:**

At the Council meeting in March, we heard that the chapter banquet was "wonderful," that the food was "good," but that the sound system had problems.

Our Council Chair, Robin Ives, passed out supplemental information on sales tax being mailed to section and group treasurers. Happily, Alan Coles already has the HPS out in front in exemplary compliance with the new state sales tax rules.

I asked about sign-in practices on HPS hikes. We're supposed to sign in at the trailhead, not at the carpool point. At an HPS meeting, someone asked what we should do when we're bagging several peaks, driving from trailhead to trailhead. I received no official answer.

We took up the role of the Council in Chapter affairs. Bob Marshall observed that the Conservation Committee acts as the focal point for external affairs. He suggested that the Council could become a similar focal point for internal affairs if we had more responsibility. For example, the Safety Committee could be a committee of the Council rather than reporting directly to the Executive Committee. There was not much support or opposition to this plan. I guess we're going to think some more on it.

**Angeles Chapter Council**

by Tom Armbruster

Here are reports on the last two monthly Council meetings. (The Council has a representative from each group, section, task force, and committee. Of the 45 or so eligible, about 15 show up each month.)

**February meeting:**

Most of the time was spent on safety concerns about the Griffith Park hikes. We had invited Ron Jones, who is not only our HPS

chair, but also serves on the Chapter's Safety Administration Committee. Many council members expressed concern about the Griffith Park hikes not having assistant leaders and not having sign-in sheets. This practice is allowed by national Club policy. Our Chapter's Safety Committee has granted Griffith Park Hikes a waiver of the Chapter's sweep and sign-in rules. A couple of years ago, there were complaints against Griffith Park Hikes, and this exception was revoked. But it was reinstated a few months later.

## Trip Writeups

These trips are not listed in the regular schedule.

May 4-5, Sat-Sun

**O: Backpack to the Big Three:** This is a makeup trip for one canceled earlier this year. Saturday involves 9 mi, 2500' gain with a backpack followed by 1500' gain, 3 mi dayhike. Sunday involves 8 mi rt, 3000' gain dayhike and a backpack out. Group size limited. Priority given to those who signed up for the previous trip. Send SASE to Leader: David Eisenberg. CoLeader: Ruth Dobos.

June 9, Sun

**O: Santiago Peak (5687'), Modjeska Peak (5496'):** Join the leader for his second list finish! If the spring weather permits we may have two second list finishes. Moderate 6 mi. rt with 2200' gain. Meet 8:00 a.m. at the Santa Ana Canyon meeting point. Leader: Charlie Knapke, CoLeader: David Eisenberg.

## Conservation Report

March—April, 1991

by Rodger Maxwell

Letters needed supporting the reintroduced California Desert Bill(S.21) and the proposed Condor Range and Rivers Act. Write Senator John Seymour, 902 Hart Senate Office Bldg., Washington, D.C. 20510. The Desert Bill will protect many of the desert peaks that we hike by including them in a national park.

The letters that you write do make a difference. Legislators respond to constituent pressure. Some tips for letter writing are: State, in the first sentence, whether you are for or against the bill; be clear and concise; use a personal tone, let them know you appreciate them and let them know why you care; each letter should cover a single subject only—two bills warrant two letters; keep it short—no more than one page; write a response when you receive an answer.

Son of Big Green will hopefully appear on the 1992 Ballot. Two Ballot Initiatives are planned. One deals with forest practices contained in old prop 130 and the other deals with saving ancient forests. Glen Bailey is seeking help in identifying ancient forests for preservation. Other legislation/issues pending or proposed includes: water policy; creation of a California EPA; coastal protection; solid and hazardous waste; other Big Green spin-offs; California Rivers Riparian Parkway Act.

There will be a work party at Zion National Park on May 24-26 led by Bill Neill, Angeles Chapter Wildlife Chair. Mornings will be work projects and afternoons will be hikes. Free park entrance and group campground. Info: 714/779-2099.

In response to AB 939 which requires a 50% reduction in waste by 2000, Waste Management Inc. and the Santa Fe Railroad have begun a joint venture called Rail-Cycle. It is an ambitious plan calling for 7 local facilities in L. A. for Byu Back, Home Hazardous Waste, and education. The non-recyclable material will be shipped by rail to a state of the art desert landfill at Bolo near Amboy. Waste Management Inc. already has guaranteed buyers for all the paper, metal, and plastic waste.

The Irvine Corp. is seeking agreement from the Sierra Club on its development plans for Gypsum Canyon, in Orange County. The Irvine Corp. Proposal tries to mitigate damage to the Tecate/Cypress Ecosystem and an eagle nest. It also includes provisions concerning adjacent Weir and Coal Canyons. Information: Ken Croker.

The BLM is seeking to establish criteria for future Barstow-Vegas Motorcycle Races. Write Bureau of Land Management, California Desert District, 1695 Spruce St., Riverside, CA 92507, to voice your opinions/concerns. Suggested criteria include; fees to cover all costs, restricted to maintained areas, race areas to be fully restored at sponsor

cost, BLM to monitor, standards for retiring areas of maximal use, enforcement by BLM at sponsor cost, routes must avoid environmentally sensitive areas.

## Register Box

by Jim Adler

My spies have been very active in the last two months. Carleton Shay, David Jensen, and Laura Webb all report that Lost Horse has a register. There was less unanimity as to Ryan, so I went with the last report indicating that it was missing in March. Betty Sterrett reports that Cole Point has a new can placed by Teri Astle and Al Holden and that Markham had a new can placed by Bobcat. David Jensen also reports that Smith Mtn.'s register is missing. Carleton Shay reports that the register on Pine Mtn. #2 is absent.

## Registers Needed:

6B	McPherson Peak . . .	deficient	7-90
7G	Alamo Mtn . . . . .	missing	11-90
11A	Josephine Peak . . .	decrepit	11-88
12B	Mt Disappointment	missing	11-90
15B	Smith Mtn . . . . .	missing	3-91
16I	Gobbler's Knob . . .	deficient	10-90
17H	San Sevaine . . . . .	decrepit	5-88
21E	Delamar Mtn . . . . .	no can	12-90
21G	Bertha Peak . . . . .	decrepit	1-90
23G	Onyx Peak #1 . . . . .	decrepit	1-90
26D	Ryan Mtn . . . . .	missing	3-91
27J	Suicide Rock . . . . .	missing	11-90
28K	Pine Mtn . . . . .	missing	2-91
29B	Little Cahuilla Mtn	deficient	2-90

If you are climbing any of the above peaks, please consider bringing a new register can and book. If you discover a peak which needs a new register can, please let me know by mail addressed to Jim Adler, 10726 Woodbine Street #3, Los Angeles, CA 90034; or by phone at 213/838-0524. Also, please advise if you have replaced any of the missing or deficient registers or discover that any of the above reports are erroneous or out of date. (Since register books and pencils are so easy to carry all the time, peaks where only books or pencils are needed will not be listed.)

## Mt Lukens < Trail Maintenance

Our 11th Annual Mid-Winter Ascent

January 12, 1991

Leaders: Bobcat & Stag  
by Bobcat Thompson

8 am on a beautiful winter Saturday morning found fifteen "hikers & hackers" assembled at La Cañada. We carpoled & caravanned over to the top of Haines Cyn. Rd. in Tujunga and began our hike about 150 yards below the top of the road on a beautiful Equestrian-Hikers trail that ascended a canyon to the East of Haines Cyn. Rd. and the Mt. Lukens Fire Rd. This nice trail ascends a wooded canyon and crosses about 2 miles up the fire road. This nice trail then ascends another mile to the junction of the Haines Canyon Trail and the Sister Elsie Trail.

We made a sharp right turn onto the Haines Canyon Trail and immediately began our trail maintenance. Almost everyone in the group had a saw or clipper as we

slowly made our way up this trail which was maintained by the Crescenta Valley section of the Sierra Club many years ago. CLIP, SAW, CLIP, CLIP, SAW. This was the best trail we ever saw! Charlie Knapke, chairman of HPS Adopt-a-Trail was in the front of the work party, clipping and sawing many of the larger branches and trees on this officially-adopted HPS trail. Everyone else enthusiastically "clipped-in" and helped fine-tune the trail and tame the 12 foot high brush. After our party of 15 had gone through, the trail was in remarkably better shape than it had been before. We still need to coordinate with the Angeles Forest to help remove the bigger trees lying across the trail and do some tread work on the trail. For the time being, it is again passable and one of the nicest routes up Mt. Lukens.

Just past an old VW Bug abandoned above the trail, we again crossed the Mt. Lukens Fire Rd. and continued up the old trail, clipping occasionally at the thicker brush, crossing the road twice again and attaining the summit of Mt. Lukens

(Sister Elsie), about noon. We spent an hour lurching and napping on top and enjoying the fine winter views into the back country of Angeles Forest.

About 1 pm, Stag led the party down the NW ridge of Mt. Lukens, past the top of the Stone Canyon Trail to a saddle on the ridge, and then down the old Sister Elsie Trail, rejoining our earlier route up the peak in about 2 miles. We arrived back at our cars about 3 pm. Many thirsty hikers/clippers reconvened at Pepe's of La Cañada for some post-hike revelry and reflection.

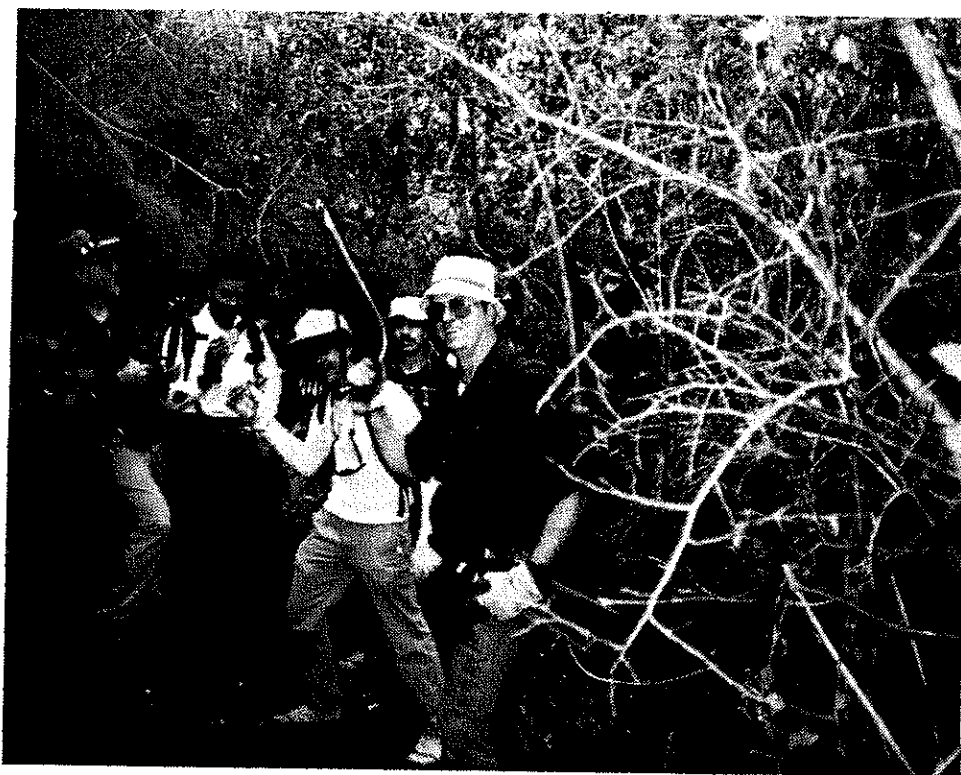
My many thanks to Charlie Knapke, who's clippers and saw did a remarkable job of clearing the trail, and to all of the great, hardworking participants who worked and sweated so hard to help clear this again beautiful trail: Jog Angerhrn (who supplied the photos), Jean Le Febre, Joel Goldberg, Alice Goldberg, Laura Webb, Gary Vidor, Nami Brown, Gary Murta, Joe Young with his monster clippers, Larry Hoak, Emmanuel Molina, Jim Fleming and of course my mentor and tormentor, the great motivator Stag Brown for his very able assistance. Same time next year!

## Cajon Pk & Sugarpine Pk

February 2, 1991

Leaders: Gabriele Rau, Jack Traeger, & Gerry Fettig  
by Gabriele Rau

26 people made it to the trailhead at Cleghorn Pass in the San Bernardino Mountains. It was a cloudy and breezy day. We hiked up the fireroad at a good pace and arrived at the turnoff to Cajon Peak after on 45 minutes—a good rate for 2½ miles. After one more mile, we reached what I thought was the turn off trail to the peak, but that trail stopped after a few yards, totally overgrown with thorny shrubs. Luckily, or CoLeader pointed out the small use trail, that we missed. Thanks, Jack! We reached the cold and windy peak very soon and left



Clip, saw, clip, clip, saw! Mt Lukens trail maintenance

very soon, after signing the register. We could see down to Cajon Pass and the many trains passing. On the way down thorny bushes attacked one of the hikers in the face ... at least the first aid kit came to some use. His face was painted red and decorated with a Band-aid. No further harm was done.

Then it was on to Sugarpine, all on fireroad except the last 200 yards. These were on a steep firebreak, but some people actually jogged uphill! After signing the register, everybody was eager to eat lunch. It was cloudy and hazy, but we still had a good view to Silverwood Lake. Mt. Baldy looked very picturesque with some snow, but behind it dark clouds were forming. Would it actually rain?

Jack Traeger and three more hikers left shortly because they were attending the 100 Peaks banquet that evening, so Gerry Fettig took over as the CoLeader. But because of the cold and the threatening clouds, we did not stay very long either and arrived at the trailhead without getting wet. After about 11 miles, we all felt we had done a good day's hiking. Thanks to Jack Traeger and Gerry Fettig for assisting! Actually, while driving home, I noticed a few single raindrops falling on the windshield!

## Martinez & Sheep

February 2, 1991

Leaders: Charlie Knapke & Frank Goodykoontz  
by Charlie Knapke

These two peaks make a very long trip when done as a day hike. I required each applicant to convince me that they were ready for a long tough hike. I screened the group down to 17 participants that I thought could handle it OK without getting back too late in the day.

A very strong group of hikers met at the starting point at dawn. After a short introduction we headed off toward Martinez. This route starts mostly down hill. Almost three hours passed before we had

climbed back up to the level of the cars.

On the way to Martinez we met several young men from San Diego State who were heading out to find a plane wreck north of Martinez. We never saw them on the way back. By 11:00 a.m. we reached the peak of Martinez. We climbed the short class three summit in two groups since there is not a lot of room on top. We then descended a short distance to a nice spot in the rocks where we had lunch.

We then headed off cross country for Sheep. The peak is in sharp contrast to Martinez. When climbing Martinez we could see our goal almost all of the way. Sheep comes into view at the very last second. We did not stay on Sheep long since I wanted to try to get the group back to the cars before dark.

Halfway back it became obvious that the group still had lots of energy. At least they were doing more talking than hiking. After a short rest at Horsethief creek I decided to see how much they had left. I stepped up the pace again and again. The bulk of the group hung right in there! In fact we reached the parking area (not the mine) almost an hour before dark.

I would like to thank everyone for participating. Special thanks goes to Frank for his assistance.

## Iron Springs, Beauty & Combs

February 9-10, 1991

Leaders: Charlie Knapke & David Eisenberg  
By: Charlie Knapke

On Saturday morning the sun rose on twenty hikers in the thriving metropolis of Aguanga. For those who are not familiar with Aguanga, it is a small village at the intersection of State Highways 79 and 371 with both corporation limit signs on the same post. At 6:35 a.m. we headed for the trailhead for Iron Springs and Beauty.

We drove to the trailhead via the new driving route via Bradford

Road. This is a public route which placed us at a parking spot just next to the Powers Ranch. I missed the cordial greeting that the HPS hikers always received from Joe Powers. Joe was extremely kind to us in the past.

The route to Irons Springs along the ridge has sure changed since I was last here. The trip went so smoothly that we were hardly out of breath when we arrived at the summit. After a short break we continued on to Beauty Peak. We arrived there just before noon. After a leisurely lunch we returned to the cars.

Since we finished so early in the afternoon, we decided to lead a car trip up to Palomar High Point. This took about two hours for the round trip. About half of the group attended the trip to this extra peak.

That evening six of our group decided to try dinner at Maggie's. It turns out that both Maggie and Frank Dobos are both from Hungary. Frank had stumbled across Maggie's restaurant several years ago. He vouched for the fact that she serves true Hungarian food. We sampled the Hungarian gulasch, the stuffed cabbage, & the vegetarian pizza (that's Hungarian?). Everyone seemed to enjoy the fare.

Two days before this hike I made a telephone call to the Orange Empire Boy Scout Council to find out if their gate on the Chihuahua Valley Road would be open. I was informed in no uncertain terms that hikers (even Sierra Club hikers) would not be welcome on the private property beyond their gate. This appears to be a permanent situation. Because of this I decided to lead Combs Peak via the Pacific Crest Trail from the next trailhead to the north.

Terry Astle had sent me a photocopy of an article written by Skip Runland, founder of the San Diego Backpacking Club. This article described a trailhead and route which seemed to be just what I needed. Frank Goodykoontz believes that this is about the same route



taken by John Backus several years ago.

Sunday morning we followed the driving instructions in Skip's article to a trailhead about ten miles south of Anza. After a delay of about forty five minutes we located the correct parking spot. We set off on the trail at about 10:00 a.m. and reached the summit a little after noon. Here we had lunch while we tried to identify as many peaks on the horizon as possible.

Soon we set off down the mountain. We quickly ran into Carleton and Hanna Shay who had hiked in from the Chihuahua Valley Road. I discussed my phone call to the Orange Empire Boy Scout Council with Carleton. He related to me that the sign on the gate did not seem to support the Council's position and that another party may be involved. I will continue to look into this matter. For the present the route from the Chihuahua Valley Road should be avoided. I will send the description for the new route from the north to the Lookout Editor for publication.

After we finished with Combs we still had some time remaining so we finished off the day with another drive-up. This one was to Boucher Hill. Only Paula Peterson was left to accompany the leaders to this peak. There is no question that this lady is serious about her peak bagging!

I would like to thank Terry Astle for her help with the new route and Dave Eisenberg for his assistance with the trip. I would like to thank everyone who attended for helping make this a great weekend.

For those of you who are interested in the northern route here is a brief description.

#### **Driving instructions:**

From Corona take I-15 south past Temecula to Hwy. 79; turn left.

Go east on Hwy. 79 for 17 miles to Aguanga; turn left on Hwy. 371.

Go north and then east on Hwy. 371 for 16.4 miles to Kirby Road (this is 1.5 miles east of Anza.); turn right.

Turn right, note odometer, and go as follows:

At 1.0 miles, Wellman Road; turn left.

At 2.0 miles, Terwilliger Road; turn right.

At 5.8 miles, Ramsey Road; turn right.

At 5.9 miles, Tule Canyon South Truck Trail (dirt); turn left.

At 8.7 miles, Rim Rock Canyon Road; turn left.

At 9.7 miles, Rim Rock Canyon Road turns right; turn right.

At 10.6 miles, fork; keep right on Rim Rock Canyon Road.

At 10.8 miles, fork; keep straight.

At 10.9 miles, parking area on the right; park here.

#### **Hiking instructions:**

Continue down the road for 240 yards to where a trail takes off to the left side. It may be marked by a duck.

Follow it down into a gully and up the other side.

After about 0.4 miles it comes to a gate and a fence.

Go through the fence and continue along this winding trail another 0.2 miles to where it meets another trail with a 4x4 post with a PCT emblem.

Turn right and go 0.2 miles to where it meets another trail.

Turn right again and follow this trail (PCT) about 3 miles to where it meets the ridge coming down east from the peak.

Leave the trail and follow a brushed route up to the peak.

out that this is not Joe's doing. The Indians who control the road into his ranch have decided that the road should be permanently gated. There is now another way to get to Joe Power's ranch. There are some new roads which allow travel to the ranch. While these roads are presently open to the public, this could change at any time. Anyone finding these roads signed or gated in the future should report this to the Mountain Records Committee ASAP. For the benefit of those who do not have access to the latest peak guide information, here are the new driving instructions:

#### **Driving route instructions for Iron Springs & Beauty:**

From Corona take I-15 south past Temecula to Hwy. 79; turn left.

Go E on Hwy. 79 for 17 miles to Aguanga; turn left on Hwy. 371.

Go N on Hwy. 371 for 6.2 miles to Bradford Road;

Turn right, note odometer, and go as follows:

At 1.5 miles, Hernley Road (dirt); turn left.

At 4.8 miles, Bonney Lane; turn right.

At 5.6 miles, Tule Peak Road; turn left.

At 6.5 miles, Powers Ranch is on the left; park on the right side of the road.

---

## **Tehachapi, Double, Black, Black, & Red**

February 23-24, 1991

Leaders: David Eisenberg & Luella Fickle

by David Eisenberg

---

## **Driving to Iron Springs Mountain**

By: Charlie Knapke

For years we have depended on the hospitality of rancher Joe Powers who allows us to drive into his ranch and park on his property in order to hike to Iron Springs & Beauty. This appears to be a thing of the past. Let me be quick to point

12 hikers met early on Saturday morning for this strenuous weekend of peakbagging. Our plan was to condense a normal 3 day outing into 2 days while still hiking at a moderate pace. We were to meet at campsite 49 in the Tehachapi Campground, (the normal trailhead) but the site was closed for the winter! A sign was posted at the entrance and we met instead at site

15, the highest we could drive to. It was quite cold and windy, but this only served to spur us on to greater efforts and increased our speed. It was a pleasant change to hike through the evergreen forest instead of the chaparral and desert found during most winter climbs. As we were signing in on Tehachapi, Luella set her staff down to snack. The staff promptly took off down the side of the mountain, never to be seen again.

I decided to try a variation of the normal route to Double. We went down the Southwest ridge of Tehachapi, making a beeline for the saddle instead of descending directly to the road. This was a much gentler route. We were correctly concerned about the snow atop Double. Prior to the last switchback, the road was filled with icy snow which made it impossible to cross. Instead, we worked our way up the firebreak, reaching the peak in time for an early lunch and cookie break.

On the return, we decided to ascend the ridge from the saddle and go back over Tehachapi rather than take the standard route which involves some loss and the high probability of finding ice on the traverse back to the road. The trail up the ridge was quite easy, and we returned safely back to the cars by 2pm.

As we headed for Black, Luella decided that she had had enough for the day. Graham Breakwell happily volunteered to take over. Because of the new construction in the cull-de-sac, we went up the gully to the right, crossed the fence, and then climbed up along the fence to the normal trail. As we slogged our way up the ridge, we observed a horseback rider with dog descending the ridge from the right. Atop Black, we found a mining claim in the register can. It was a BLM form, so apparently Black is indeed public land.

On the way to our campsite, we stopped at Graziano's in Mojave, an excellent place to regain those calories lost by hiking. Alice Cahill, Greg Gerlach, Jim Hinkley, and

Graham Breakwell had to return to Los Angeles. The rest of us camped along the road to the Chuckwalla trailhead.

Sunday, we were met by Dan Rollins and Laura Webb, who had driven out to get Black and Red. We consolidated cars for the dirt road driving and thus managed to get almost to the rainwater collector before we had enough jolting for the day. Walking through the old crater was quite a treat. Descending, we walked around the crater so we could get a bird's eye view.

Our last peak of the weekend was Red. This aptly named peak seemed to also be part of an old volcano, but we were not able to figure out which side we were on. Luella took over as leader. She wanted to try a different route so we went up the leftmost ridge of the three visible from the trailhead. This turned out to be quite gentle, so we returned the same way. We enjoyed excellent views in the distance while discussing the origin of the yellow tanks on top Black. We decided that it was the fuel supply for an early aircraft beacon.

Participants not named above were: Erich Fickle, George Schroedter, Dorothy Pallas, Evan Samuels, Fred Johnson, and Georgina Burns. Thanks to Luella and Graham for CoLeading.

## **Mt. Wilson & Harvard**

March 2, 1991

Leaders: David Eisenberg, Luella Fickle, & Erich Fickle  
by David Eisenberg

15 hikers met at the trailhead of the Mt Wilson Trail at 7:00 am. This is one of the most beautiful of all the HPS routes on the list. The Los Angeles area had just been blessed with a series of rainstorms, the latest on March 1st. There had been some concern that the trip would not go, but we awoke to a clear sunny day.

The trail quickly leaves the residential area below it. During the

1st mile, we had spectacular views of California deck life styles. We were awed by the work the residents had put in above and below the trail to stave back the eventual covering of their houses by the inevitable mudslide.

We suddenly heard a strange sound ahead. It took several minutes to sift through the dust in our memories—It was the sound of running water!. For the next 2½ hours, we were to be treated to the wonderful sound of gushing water. We reached the fork to First Water after about 1 hour of hiking. We decided to continue on the upper trail and visit First Water on the return. 1 hour later, we reached Orchard Camp where we took a longer break. This is the remains of a cabin and camping site. Wilson first used this as a base for his logging operations. Later it was a commercial camping stop.

From Orchard Camp, the trail switches back steeply up the side of the ridge to where it joins the trail from Chantry Flats. Turning left, we ascended to the Mt. Wilson Toll Rd. At the turn off to Harvard, we took the newly (2 years old) reconstructed trail to the parking lot; where we promptly headed for the snack bar to reacquaint ourselves with the great sandwiches. Along the way up, We had shrunk the size of our group to 10. We were too slow for 1, the gain was too much for 3 and Bill Wisda wanted to hike up the road rather than the trail.

We left the snack bar at 12:10 and headed back down the trail. We had no intention of subjecting ourselves to any more road than was necessary and took the trail up the north ridge of Harvard. This trail was a surprise pathfinder for several in the group and is quite scenic. We sat for a brief rest atop the newly poured concrete slab next to the peak before heading back down the trail to the saddle. Bill Wisda rejoined us here. (He had no desire for Harvard.) During the descent, we found a piece of wood perfect for use as a staff! This was welcomed by Luella who had lost her staff on

Tehachapi. ½ hour after leaving Orchard Camp for the last time, we took the fork down to First Water. This is the most Riparian part of the trip, involving 2 stream crossings. By this time, several groups had made the hike this far and we heard the sounds of frolicking youngsters amid glimpses of lovers young and old.

Hikers not mentioned before were Emma Burd, Jennifer Lambelet, Frank (SWM NUDE) Atkin, Carol Smetana, Larry Shumway, and Mitch Helbrecht.

### **Iron #3, Round Top, Granite #1, Rabbit #1**

March 2, 1991

Leaders: Stag Brown & Joe Young  
by Joe Young

Seven hikers met at Lloyd's of La Cañada for the traditional prehike breakfast at 6:00 am, and these seven joined eight others at 7:00

at the La Canada meeting place for the caravan to Monte Cristo Campground. The weather that day was sunny, wind calm and temperatures moderately cool after a three day storm had brought much needed rain and snow to Southern California.

At Monte Cristo Campground we tossed a coin to determine whether the hike would be conducted in a clockwise direction (Rabbit→Granite→Round Top→Iron) or counterclockwise (Iron→Round Top→Granite→Rabbit), and counterclockwise won. We began the hike at 8:00, following Stag up ridges to the summit of Iron, the last arriving there at 9:10. We stayed briefly on the summit before following Joe up the firebreak to Round Top. En route we stopped on a bump on the ridge where Harriet Edwards led us in some Oktoberfest songs. Harriet, who knows German fluently, may help lead us in song at this year's HPS Oktoberfest (Oct 5-6)

We arrived at the summit of Round Top at approximately 10:40.

Having put 3000' of gain behind us, we enjoyed phase I of lunch. Charlie Knapke found the register can which was well hidden, the proof of which is that no entries were found in the register from August 1990 through February 1991. Views north and northwest were particularly clear. The Tehachapis and other northern ranges were prominent. Looking east Waterman and Twin were beautiful in their mantle of white. Only four days earlier they were totally dry.

We then proceeded to Granite, which was snow covered from the 6300' elevation upward. We relaxed on the rocky summit block, occasionally pelting those below with snowballs. Nami "Thumper" Brown built a snowbunny, neatly decorated with whiskers of pine needles. We enjoyed phase 2 of lunch, enhanced with weenies, mustard included, and homemade bread provided by Stag.

Leaving Granite at about 11:30, we proceeded down to little Rabbit. We stayed on its summit a short time, at which point Stag led the group down the south ridge of Rabbit to the dirt road leading to the campground. Instead of hiking the road from here, Stag led us crosscountry generally southwesterly along mostly open ridge tops to a point perhaps 1/2 miles from the campground, where we again intersected the road. We walked the road for that last stretch, arriving at Monte Cristo at 2:50.

Nine of this very congenial group met at Pepe's of La Canada for post hike revelry and good Mexican food.

### **Smith Mountain**

March 9, 1991

Leaders: David Eisenberg & David Jensen  
by David Eisenberg

Attempting to meet the need for introductory hikes, we decided to take the opportunity to lead this excellent front range peak. Smith Mountain has the advantages of being close to the city with a moderate gain suitable to newcomers. The trail offers a taste of the best the HPS has to offer: the

gentleness of the PCT with just a taste of firebreak and 2nd class rock to whet the appetite.

30 Hikers came out for this activity. 22 were Sierra Club members while 8 were newcomers. Quite a number of the 22 were on their first HPS hike.

Since this was a beginner's hike, we set the pace at 600' of gain per hour, planning on a summit lunch at noon. This allowed a late carpool meeting time of 8:00 with a departure from the trailhead at 9am.

There was only one slide due to the previous day's rain. The newcomers were fairly leery of it, but crossed it gingerly.

We reached the summit of Smith at 11:40, a bit ahead of schedule. To David Jensen's surprise, the register, which he had seen a scant 2 weeks before, was missing. We took a longish lunch, sharing various goodies before departing for the cars.

With luck, we now have several new peakbaggers for our section.

### **Foster Lodge**

by Frank Dobos

We all know the frustration of the lack of camping space in the Cuyamaca State Park area: High priced campgrounds with "FULL" signs and lack of BLM land where we could carcamp.

Luckily, the sierra club San Diego Chapter has the Foster Lodge on the Sunrise Hwy. near some of our listed HPS peaks. They are very friendly hosts. For \$3/day, you can sleep inside, use the kitchen facilities and share the comradery. It is advisable to call ahead as the lodge is sometimes occupied by large groups. Contact Jack Hathaway at 619/277-8508 or Maureen Clyment at 619/583-2153.

The San Diego Chapter has overseer training seminars. Host training dates are July 13-14 and October 5-6. Seminars are free with food included.

The lodge is located on the Sunrise Hwy across the road from the Shriner's Camp, North of the town of Laguna.

### TOPO MAPS CONTINUED

**Angeles Chapter Office: The John Leonard Memorial Map Collection**, 3550 W. 6th Street, Suite 321, Los Angeles 90020. Hours: Mon—Fri, 10 am—6 pm. 213/387-4287

Established in 1985, this collection particularly focuses on topos of interest to the HPS, DPS and SPS, in all of which John was an active member. This is not a static collection, as it continues to be updated through various gifts and purchases. The maps cannot be checked out but, if you're cool about it, you can probably make reasonable use of the office copying machine. The library is self-service; please return items to their proper geographical and/or alphabetical location in the map drawers located in the office west of the conference room.

OK, so you want to get your very own original, full-color topo. The best source is *The Source*.

**The US Geological Survey, Western Distribution Branch:** Building 41, Federal Center, Denver, CO 80225

Ordering by mail is both the easiest and cheapest, though not the fastest, means of procurement. Map coverage for each of the western states, including Hawaii and Alaska, is now available in the new booklet style State Index and State Catalog. The Index's regional map format makes it very easy to pick out the 7.5 min topos for your area of interest. The companion Catalog indicates when, and if, the map was published. While each State Index is now good for all time, the corresponding Catalog is supposed to be updated every few years as additional 7.5 min topos are published. The latter booklet also contains the proper form for ordering maps from Denver.

The standard 7.5 and 15 min topos are \$2.50 each. There is no sales tax and, for orders over \$10, there is no postage and handling charge. Such a deal! Figure on about

three weeks for delivery. Note, on an order over \$500, there is a 50% discount. (Recall, a year or two ago Tom Armbruster magnanimously organized the considerable effort required to get enough individual orders to earn the discount.) How to get a free California Index and Catalog? Stay tuned.

You want cheap but are willing to trade easy for faster? Go to the:

**US Geological Survey: Earth Science Information Center**, Room 7638, Federal Building; 300 N. Los Angeles Street, LA 90012. Hours: Mon—Fri, 11 am—4 pm. 213/894-2850 (Phone calls only from 8:30 am.)

You've got to check this treasure out. It's especially handy if you have jury duty downtown. They stock the complete line of all topos for CA, OR, WA, HI, AZ and NV, plus larger scale maps for AK, UT, WY, MT, ID, CO and NM. A big plus for us is the self-service access to all the topos for CA, NV and AZ. This makes it easy to browse or research. All sales are over the counter: (no mail order) \$2.50 each for 7.5 and 15 min topos, no sales tax. **However**, they will accept phone requests for mailing without charge the various State Indices and State Catalogs. The Center also has a wealth of other kinds of maps, books and pamphlets, many of the latter free.

The crux move here was parking. Not to worry! You can now park free in "Joe's Parking Lot" on Alameda between 1st and 2nd (about a 5-7 min. walk). Actually, you pay Joe first, get your ticket stub validated at the Center, and then Joe gives the refund. It works!

Note, there are similar Earth Science Information Centers up north: San Francisco—504 Custom House, 555 Battery Street. 415/705-1010; and Menlo Park—Bldg. 3, 345 Middlefield Rd. 415/329-4309.

You really want it already? Go to a local retailer.

The various **REI Co-op, Adventure 16** and **Sport Chalet** outlets are all good sources for the more popular 7.5 and 15 min topos. All still sell them at the \$2.50 each price, plus sales tax. The following specialty retailers generally offer more complete map coverage and a higher price. The list is hardly exhaustive. Such a list, however, is to be found in the front of each State Catalog.

**San Fernando Valley: Geographia**, 4000 Riverside Drive, Burbank 818/848-1414. Hours: Mon—Sat, 10 am—6 pm. Cost: \$3.00.

**San Gabriel Valley: Pasadena Map Co.**, 1778 E. Colorado Blvd, Pasadena 818/795-3626. Hours: M—F, 9am—6pm; Sat 10—4. Cost: \$3.25.

**West L.A.: The Map Shop**, 12112 W. Washington Blvd, West L.A. 213/391-1848. Hours: Mon—Fri, 10 am—6 pm. Cost: \$3.25.

**Farther East: Riverside Blueprint Co.**, 4295 Main Street, Riverside 714/686-0530. Hours: M—F, 8am—5pm; Sat 9—1. Cost: \$3.50.

**Orange County: Allied Services**, 966 N. Main Street, Orange 714/637-8824. Hours: Tu—F, 10am—6pm; Sat 10—3. Cost: \$3.25. I understand that they have topo coverage for the whole country.

Note: all information is current as of February, 1991. Phone ahead for updates and to check the availability of particular maps.

Now that you have it in hand. **GO FOR IT!**

## DeAnza Historic Trail Signed into Law

from *American Hiker*, November, 1990

The DeAnza National Historic Trail was signed into law by President Bush in early September. The historic corridor, which traces

the route of Spanish settlers, winds from Mexico to Tuscon, Arizona, where it crosses mountains and desert to the Pacific Coast near San Gabriel, California. From here, the route follows the shoreline northward to San Francisco.

American Hiking Society testified in support of this new national historic trail earlier this year. In addition, AHS board member George Cardinet played a key role in the creation of the DeAnza Trail, and helped organize hearings on the trail along the route. A management plan will now be drawn up.

AMERICAN HIKER IS A PUBLICATION OF THE AMERICAN HIKING SOCIETY. THE AMERICAN HIKING SOCIETY IS A NATIONAL, NONPROFIT ORGANIZATION DEDICATED TO IMPROVING AMERICA'S FOOT TRAILS ON PUBLIC AND PRIVATE LANDS. FOR FURTHER INFORMATION ON THE BENEFITS OF AHS MEMBERSHIP, WRITE: AMERICAN HIKING SOCIETY, 1015 31ST STREET NW, WASHINGTON, DC 20007

## Don't Let the Signs Fool You

The Public Domain belongs to the Public — not to illegal sign posters!

by Walt Wheelock

Reprinted from *Desert Magazine*: December, 1961 with permission from the author.

We were driving slowly along a graded road west of Shoshone, looking for a pair of dirt tracks that would lead up the gently sloping wash. On a previous trip, we had followed this desert road about three miles to a long-abandoned prospect site, through a region rich in chalcedony float. As we approached the turnoff, we noticed a couple of signs had been erected alongside of the side road. One was a simple NO TRESPASSING, while the other stated, PRIVATE ROAD - KEEP OUT.

As a person with 25 years service on the Glendale Police Department, and one who considers himself a law abiding citizen; I

found the signs a little disconcerting, to say the least.

But, I knew that the roadway we were on lies across Bureau of Land Management property, and as such was not subject to closure.

Deciding to investigate, we followed the road to its end, passing several other warning signs, before reaching the abandoned mine-prospect hole. Here, we found that a "weekend paperhanger" had daubed white paint on a set of corner monuments and had posted claim notices on 20 acres. The old-timers of the region had long ago found that there was no payable dirt here, but this had not prevented our novice prospector from posting a relocation claim. This he had done in a lawful manner, but also had presumed to illegally attempt to close and prevent ingress over 3 miles of public desert land.

Unfortunately, many wanderers of desert backcountry trails are not acquainted with the laws covering ingress and transit of public lands. These people are frightened off by illegal sign posting and inclosure.

Equally unfortunate is that such random and unlawful posting of NO TRESPASS signs tends to breed contempt and disregard for signs legally posted.

Federal law is quite clear on this subject. The basic law as given in the United States Code (43 USC 1061) declares that all unauthorized inclosures by private parties or corporations of public lands are illegal. In an early case, *Clemmore vs. Gillette* (33 Mont 321), it was stated: "any citizen inclosing a section of the public domain is in violation of this act...cannot...prevent another from trespassing on the land."

The following section of the Public Land Law (43 USC 1063) is more specific: "No person, by force, threats, intimidation or fencing or inclosure or any other unlawful means...shall prevent...or obstruct the free passage or transit over public lands." In a 1921 Idaho case (260 US 353) it was held that the

display or use of firearms to prevent lawful transit is unlawful.

The concluding section of the Law (43 USC 1065) provides for the removal of unlawful inclosures, and states that civil or military force may be used if necessary.

In the Taylor Grazing Act, the law specifically forbids any attempt to prevent the crossing of leased lands. In addition, the entry of persons interested in the ingress and use of these leased lands for mining exploration, hunting, fishing or recreation is definitely authorized. Any act tending to block such use is forbidden.

The Bureau of Land Management (BLM) in Los Angeles states that its office ordinarily does not issue permits to construct roads to mining claims, feeling that the general laws providing for access to claims are sufficient to allow for the construction of roadways to mining sites. The BLM does require, however, that the road be constructed along the shortest practicable route, but makes no other restriction. It was pointed out that such roads may be privately constructed by the mine owner, *but that the mine owner has no more right to their use than any other person wishing to travel this route.* BLM field agents are instructed to remove any unlawful signs.

However, if a mine owner does build a roadway, primarily for his own use, he is under no obligation to maintain this road in a safe condition for the protection of any casual user. Posting a sign stating USE AT YOUR OWN RISK is a proper procedure. Likewise, a sign PRIVATE BUILT ROAD—USE AT YOUR OWN RISK would be a legal posting. There would be no material objection to abbreviating this to PRIVATE ROAD—USE AT YOUR OWN RISK, as there is no attempt in this wording to prevent ingress or transit of this road.

But a sign, WARNING—PRIVATE ROAD—KEEP OUT is a definite violation of Section 1063, an attempt to prevent transit by threats.

Under certain conditions, the BLM does lease land and right-of-way tracts for the construction of private roads. Many rights-of-way across the desert and the mountains have been leased for electrical transmission lines, such as the Hoover Dam - Los Angeles power line. Leases have also been completed for gas and oil pipelines. In these cases, the right to build a private roadway is included, and the right-of-way may be fenced and posted.

However, the lessee may not close any pre-existing roadway crossing the proposed transmission line. In no manner may the lessee prevent travel from one side of the strip to the opposite side. Simply stated, such a transmission line operator may restrict travel along the leasehold, but not access it.

In many cases, the transmission company will post signs at each road crossing, stating PRIVATE ROAD. This is to safeguard the lessee from damage suits that might result from accidents suffered by unauthorized users of the road. By so posting, the trespasser is prevented from claiming that he was an *invitee*, hence the responsibility of the lease holder.

In addition to transmission lines, a number of leases have included the necessary right-of-way to enable contractors to build and maintain microwave and television repeater stations. These have the same status as the transmission lines discussed above.

There are other types of uses of public lands that have their own rules and laws. Thousands of acres of desert lands have been withdrawn from public uses by the various Armed Forces. While these lands are still publicly owned, the military authorities have complete control and may absolutely forbid entry to these reservations or bases. These are usually fenced and always posted. When such a sign reads KEEP OUT, it means just that.

During World War II, California and several other states, realizing the great damage sabotage could

cause to our defense efforts, passed a special form of trespass law. Even though a score of years have passed since the war, these laws remain on the books. It states that if a public utility installation is posted with a specified size and type of sign, then no unauthorized person may enter upon the installation. The law also requires that the plant or station be fenced or posted at rather close intervals.

In California, the sign must be not less than one square foot in area and must bear the words, in letters at least 2 inches high, TRESPASSING-LOITERING FORBIDDEN BY LAW. These signs have not this force if they are posted in any other way. I have noticed such a sign posted a mile away from a microwave repeater station. Such a posting does not comply with the requirements.

U.S. Forest Service regulations provide for the private construction of roadways to serve timber sales. These routes may be closed to public use for safety reasons. Similarly, some forest roads are subject to fire season closures.

The National Park Service may close and even abandon public roads in National Parks and Monuments when it is considered that such action is necessary to protect the natural beauty of the area. Many old mining roads have been closed in Joshua Tree National Monument under this procedure.

Apparently unoccupied areas in the desert often may be railroad or school lands or have otherwise been transferred to private ownership. In these cases the ordinary trespass laws apply.

With the above exceptions, there are no "private lands" in the public domain. However, many miners and desert dwellers who have suffered from acts of vandalism claim that they should be entitled to protect their property. The folks maintain that any type of sign that will stop this destruction is justified. Consideration of the property rights of others would eliminate the need for many of these illegal signs.

## Trail Updates

Since February 1, 1991  
by Brent Washburn

### Peak Guide Changes:

- 1C SPLIT MOUNTAIN: Added Tobias Peak USGS map.
- 1H OWENS PEAK: Changed nearby peak name to Five Fingers. (Aquila Peak)
- 1I FIVE FINGERS (AQUILLA PEAK): Changed peak name per Management Committee decision, March 1991.
- 1J MOUNT JENKINS: Added nearby peak, Morris Peak. (1F)
- 2M HEALD PEAK: Typo.
- 2N BLACK MOUNTAIN #6: Driving route directions shortened so you walk last 0.9 mi. (Alan Coles' recommendation)
- 4E TECUYA MOUNTAIN: Clarified, per input from Walter Studhalter.
- 7I SEWART MOUNTAIN: Driving route directions shortened so you don't bypass gate, and walk last 0.3 mi. (Alan Coles' recommendation)
- 7Q HINES PEAK: Added Ojai and Santa Paula Peak USGS maps.
- 9D FOX MOUNTAIN #2: Clarified route 2 writeup.
- 10C PACIFICO MOUNTAIN: Typo.
- 10D BARE MOUNTAIN: Old route discontinued. New primary route is from PCT, route 2 from Little Cedars CG, per management Committee decision, March 1991.
- 11E MOUNT SALLY: Added (LO) to name of Vetter Mountain, as a nearby peak.
- 11F VETTER MOUNTAIN (LO): Added (LO) to peak name.
- 11G MOUNT MOONEY: Added (LO) to name of Vetter Mountain, as a nearby peak.
- 12G MOUNT WILSON: Added routes 5 and 6. Route 5 is the Little Santa Anita Canyon trail form Sierra Madre. Route 6 is the Newcomb Pass Trail. Input from Southern Courtney.
- 15C RATTLESNAKE PEAK: Added detail to writeup to follow road ½ mile beyond the road fork

- down to Heaton Flat. (Wes Veit recommendation)
- 16E MOUNT SAN ANTONIO: Added Mount Harwood as a Nearby Peak.
- 16F THUNDER MOUNTAIN: Added Mount Harwood as a Nearby Peak. Corrected typo.
- 16G TELEGRAPH PEAK: Added Mount Harwood as a Nearby Peak.
- 16J MOUNT HARWOOD: Correct typo: "Mount San Antonio" for "Mount San Gorgonio" in 3 places.
- 25I KITCHING PEAK: Added Snow Peak as a Nearby Peak.
- 26B QUAIL MOUNTAIN: Deleted old primary route per Alan Coles' recommendation, because of private property. New primary route is previous route 2, via Johnny Lang canyon. New route 2 is via Juniper Flats Road to the South.
- 26E MOUNT INSPIRATION: Changed the peak name from Inspiration Point, per Management Committee meeting of January 1991.
- 27E FOLLY PEAK: Typo: the topo is San Jacinto Peak.
- 28G SPITLER PEAK: Driving route clarification by Frank Goodykoontz: At 0.4 mi., keep left.
- 28H PALM VIEW PEAK: Added a route from Cone Peak via recently refurbished horse trail on the W side of Cone Peak. (First spotted by Ron Jones)
- 28M BUTTERFLY PEAK: Clarified driving route directions. (Input from Ron Jones)
- 31I SAN YSIDRO MOUNTAIN: Discontinued previous primary route because of private property. (Alan Coles' Recommendation)
- 32K CUYAPAIPE MOUNTAIN: Changed the hiking route to follow a trail around private property. (Input from Ron Jones)
- 32L SHEEPHEAD MOUNTAIN: Changed the hiking route writeup to show the new fence (which can be avoided) at the junction of the jeep road and Kitchen Creek Road.
- Map Changes:**
- SST-7 FIVE FINGERS (AQUILLA PEAK) TOPO: Changed the peak name from Aquila Peak, per Management Committee decision, March 1991.
- SST-16 BLACK MOUNTAIN #6 TOPO: Changed the designated parking spot back 0.9 miles to the dirt road shown. (Alan Coles Recommendation)
- SST-18 SKINNER PEAK TOPO: Changed to show route 2 per new writeup 2F.
- FPT-4 TECUYA MOUNTAIN TOPO: Changed to match new writeup 4E.
- LPT-1B NORTHWEST APPROACH TO CALIENTE MOUNTAIN TOPO: Changed to identify gates per new writeup 5A.
- SGT-6 PACIFICO & BARE MOUNTAIN TOPO: Discontinued old primary route up Bare Mountain. New primary route from PCT is shown, and new route 2 from Little Cedars CG is shown.
- SGT-10 OCCIDENTAL PEAK, MOUNT WILSON, & MOUNT HARVARD TOPO: Routes 5 and 6 up Mount Wilson have been added.
- SGT-18 RATTLESNAKE PEAK TOPO: Corrects the hiking route up Rattlesnake Peak. (Wes Veit recommendation)
- SGT-20 MOUNT SAN ANTONIO & MOUNT HARWOOD TOPO: Changed to show routes up Mount Harwood.
- SBT-30 KITCHING PEAK TOPO: Changed to show the road to Snow Peak parking area.
- SBT-30A SNOW PEAK TOPO: Added this topo to show the route to Snow Peak, per writeup 25J.
- JTT-2 QUAIL MOUNTAIN TOPO: Discontinued old primary route up Quail Mountain. Added route 2 from Juniper Flats Road.
- JTT-5 LOST HORSE MOUNTAIN & MOUNT INSPIRATION TOPO: Changed the name of Mount Inspiration from Inspiration Point, per Management Committee decision.
- SJT-7 PALM VIEW PEAK — LION PEAK TOPO: Added refurbished horse trail along the West side of Cone Peak.
- SJT-17 BUTTERFLY PEAK & ROCK POINT TOPO: Added 2WD parking location at the start of road 6S09.
- SDT-5 SAN YSIDRO MOUNTAIN TOPO: Discontinued previous primary route because of private property. Old route 2 becomes the new primary route, just E of the State Park boundary. (Alan Coles' Recommendation)
- SDT-12 CUYAPAIPE MOUNTAIN TOPO: Changed to show the new trail around private property.

## Corrections to the HPS Peak List

by Bill T. Russell

- 2C **Nicolls**: The Topo should be spelled "Woolstalf."
- 2M **Heald**: The Topo should be spelled "Woolstalf."
- 7A **Frazier Mtn** was left off inadvertently.
- 7I **Sewart** was misspelled.
- 8A **Liebre** was misspelled.
- 21F **Arctic** was misspelled.

## EcoFacts

From the National Sierra Club

- Every week, more than 500,000 trees are used to produce the two-thirds of newspapers that are never recycled.
- Americans go through 2.5 million plastic bottles every hour, only a small percentage of which are now recycled.
- We throw away enough iron and steel to continuously supply all the nations automakers.
- Americans throw away enough glass bottles and jars to fill the 1,300 foot twin towers of New York's World Trade Center every two weeks.





Compiled by Patty Kline & David Eisenberg

Trips listed below are for advance notice only. Please check with the Angeles Chapter Schedule for actual trip details or call listed leaders for information.

Leader Frequency List Of Days Led				Leader Frequency List Of Peaks Led
59 Leaders with the # of days led or assisted. (Ties in ABC order)				59 Leaders with the # of Peaks led or assisted. (Ties in ABC order)
David Eisenberg . . . 24	7/6	Harwood, Baldy	Luella Fickle, David Eisenberg	David Eisenberg . . . 73
Frank Goodykoontz . . 17	7/13	Three Sisters	Alan Coles, Frank Goodykoontz	Frank Goodykoontz . . 53
Frank Dobos . . . . . 11	7/13	San Jacinto, Folly, Jean, Marion, Cornell	David Eisenberg, Frank Dobos	Charlie Knapke . . . . 38
Ruth Dobos . . . . . 11	7/13	Suicide Rock	Gabriele Rau, Gordon Lindberg	Frank Dobos . . . . . 23
Charlie Knapke . . . . . 8	7/14	Suicide Rock, Castle Rocks, Black#1	Frank Goodykoontz, Flora Johnston	Ruth Dobos . . . . . 20
Leora Jones . . . . . 7	7/14	Baden-Powell, Throop, Burnham	Don Gunn, Sue Gunn	Patty Kline . . . . . 18
Ron Jones . . . . . 7	7/14	Bighorn, Dragon's Head	Bob Thompson, Joe Young	Leora Jones . . . . . 16
Patty Kline . . . . . 7	7/20	Baden-Powell	Stag Brown, Bob Thompson	Ron Jones . . . . . 16
George Schroedter . . 7	7/20	Twin Peaks, Waterman	Frank Goodykoontz, Frank Long	Alan Coles . . . . . 14
Alan Coles . . . . . 6	7/20	Waterman	Tal Kanigher, Pat Sullivan	Luella Fickle . . . . . 12
Luella Fickle . . . . . 6	7/20-7/21	Entire San Grogonio Ridge Backpack	David Eisenberg, Charlie Knapke	George Schroedter . . 11
Gordon Lindberg . . . 5	7/21	Baldy, Harwood	George Schroedter, Southern Courtney	David Jensen . . . . . 9
Bob Thompson . . . . 5	7/27	Cucamonga, Etiwanda	Alan Coles, Frank Goodykoontz	Gordon Lindberg . . . 9
Joe Young . . . . . 5	7/27	San Jacinto	Sid Davis, Andy Smatko	Joe Young . . . . . 9
Wynne Benti . . . . . 4	7/27	Smith	Joe Young, Wynne Benti	Wynne Benti . . . . . 7
Southern Courtney . . 4	7/27-7/28	Sugarloaf, Onyx, Three Sisters	David Eisenberg, Frank Dobos	Southern Courtney . 6
Jack Trager . . . . . 4	8/3	Mt. Wilson	Don Austin, Doug Demers	Bill T Russell . . . . 6
Minor White . . . . . 4	8/3	Islip	Ruth Dobos, Dotty Sandford	Bob Thompson . . . . 6
Stag Brown . . . . . 3	8/3	Galena	David Eisenberg, Don Borad	Jack Trager . . . . . 6
David Jensen . . . . . 3	8/3	Islip, Hawkins, Middle Hawkins, South Hawkins	Frank Goodykoontz, Charlie Knapke	Minor White . . . . . 6
Tal Kanigher . . . . . 3	8/3	Sugarloaf Mtn	Jack Trager, Gordon Lindberg	Terri Astle . . . . . 4
Pat Sullivan . . . . . 3	8/4	Twin Peaks, Waterman	Patty Kline, Bob Hartunian, David Eisenberg	Stag Brown . . . . . 4
Terri Astle . . . . . 2	8/4	Baden-Powell	Mike Sandford, Dotty Sandford	Don Gunn . . . . . 4
Don Gunn . . . . . 2	8/10	Josephine	Bob Thompson, Joe Young	Sue Gunn . . . . . 4
Sue Gunn . . . . . 2	8/10	Throop, Burnham	Tal Kanigher, Pat Sullivan	Tal Kanigher . . . . . 4
Eivor Nilsson . . . . . 2	8/11	Williamson, Krakta Ridge	Southern Courtney, George Schroedter	Darlene Kurtzwell . . 4
Gabriele Rau . . . . . 2	8/14	Galena	Frank Dobos, Ruth Dobos	Alice Spring . . . . . 4
Dotty Sandford . . . . 2	8/17	Thunder, Telegraph, Timber	Luella Fickle, Jack Trager	Pat Sullivan . . . . . 4
Asher Waxman . . . . . 2	8/17	Peak, McPherson	Leora Jones, Ron Jones	Pepi Westhal . . . . . 4
Pepi Westhal . . . . . 2	8/17	Wright, Pine, Dawson, Baldy, Harwood	Charlie Knapke, Frank Goodykoontz	Flora Johnston . . . . 3
Tom Armbruster . . . . 1	8/17	Waterman	Jon Sheldon, Ruth Feldon	Terri Sutor . . . . . 3
Don Austin . . . . . 1	8/17-8/18	Piute, Sorell, Bald Eagle, Lightner, Cannel Pt	David Eisenberg, Wynne Benti	Asher Waxman . . . . 3
Don Borad . . . . . 1	8/21	Smith	Jack Trager, Gordon Lindberg	Nami Brown . . . . . 2
Nami Brown . . . . . 1	8/31	Thunder, Telegraph, Timber, Bighorn, Ontario, Sugarloaf	Charlie Knapke, David Eisenberg	Barbara Cohen . . . . 2
Barbara Cohen . . . . 1	8/31	Cleghorn, Cajon, Sugarpine, Monument Pk	Joe Young, Alice Spring	Sherry Harsh . . . . . 2
Bill Crane . . . . . 1	9/1	Baden-Powell, Ross, Burnham, Throop	Charlie Knapke, David Eisenberg	Bob Hadjucian . . . . 2
Sid Davis . . . . . 1	9/7	Snow Pk	Luella Fickle, Jack Trager	Frank Long . . . . . 2
Doug Demers . . . . . 1	9/7	Sally, Vetter, Mooney	David Jensen, David Eisenberg	Mary McMannes . . . . 2
Edna Erspamer . . . . 1	9/7	San Gorgonio	George Schroedter, Southern Courtney	Eivor Nilsson . . . . . 2
Charlotte Feitshans . 1	9/7-9/8	Cannel Pt, Bald Eagle, Piute, Sorell	Frank Dobos, Ruth Dobos	Jim Raiford . . . . . 2
Ruth Feldon . . . . . 1	9/11	Cleghorn, Sugarpine, Cajon	George Schroedter, Pepi Westhal	Gabriele Rau . . . . . 2
Sherry Harsh . . . . . 1	9/14	Waterman, Twin Pks	Nami Brown, Stag Brown	Dotty Sandford . . . . 2
Bob Hartunian . . . . . 1	9/14	Harwood, San Antonio	Frank Dobos, Ruth Dobos	Carleton Shay . . . . 2
Flora Johnston . . . . 1	9/14	Bighorn, Dragon's Head, Lake, Grinnel, 10K Ridge	David Eisenberg, Frank Goodykoontz	Tom Armbruster . . . . 1
Darlene Kurtzwell . . 1	9/14	Rabbit Granite #1, Round Top	Ron Jones, Leora Jones	Don Austin . . . . . 1
Frank Long . . . . . 1	9/15	Islip	Don Gunn, Sue Gunn	Don Borad . . . . . 1
Rodger Maxwell . . . . 1	9/21	Eagle Rest, Antimony	David Eisenberg, Carleton Shay	Bill Crane . . . . . 1
Mary McMannes . . . . 1	9/21	Smith	Charlotte Feitshans, Rodger Maxwell	Sid Davis . . . . . 1
Jim Raiford . . . . . 1	9/21	Baden-Powell	Tal Kanigher, Pat Sullivan	Doug Demers . . . . . 1
Julie Rush . . . . . 1	9/22	Galena, Little San Grogonio, Wilshire Mtn, Wilshire Pk, Cedar, Birch	Bill T Russell, Frank Goodykoontz	Edna Erspamer . . . . 1
Mike Sandford . . . . . 1	9/28	Palette, Will Thrall, P V Ridge	Terri Astle, Terri Sutor	Charlotte Feitshans . 1
Carleton Shay . . . . . 1	9/28-9/29	Red Taquitz, South, Antseil, Spitter, Apache	Alan Coles, Frank Goodykoontz	Ruth Feldon . . . . . 1
Jon Sheldon . . . . . 1	9/28-9/29	Granite, Tip Top, Mineral, Silver, Gold, Bertha, Arctic, Delamar	David Eisenberg, Charlie Knapke	Rodger Maxwell . . . . 1
Andy Smatko . . . . . 1	9/28-9/29	Alamo, McDonald, Sewart, Ortega Hill, Ortega Pk, Reyes	Leora Jones, Ron Jones	Julie Rush . . . . . 1
Alice Spring . . . . . 1	10/5	Harwood	Wynne Benti, Joe Young	Mike Sandford . . . . 1
Terri Sutor . . . . . 1	10/5	Lookout #2	Stag Brown, Bobcat Thompson	Jon Sheldon . . . . . 1
Bill T Russell . . . . . 1	10/5	Sunset Pk	Bill Crane, George Schroedter	Andy Smatko . . . . . 1
Vieve Weldon . . . . . 1	10/5	Buck Pt, San Sevaine	Leora Jones, Ron Jones	Vieve Weldon . . . . . 1
Bob Wheatley . . . . . 1	10/5	Mt San Antonio	Patty Kline, Frank Goodykoontz	Bob Wheatley . . . . . 1
	10/5	Mt. Lowe	Eivor Nilsson, Edna Erspamer	
	10/6	Baden-Powell	Gabriele Rau, Bob Wheatley	
	10/6	Sunset Pk	Tom Armbruster, Terri Astle	
	10/6	Lookout #2	Frank Dobos, Ruth Dobos	
	10/6	Cucamonga, Etiwanda	David Eisenberg, Patty Kline	
	10/6	Bighorn	Bob Thompson, Julie Rush	
	10/12	Pleasant View Ridge, Will Thrall, Palette	Frank Dobos, Ruth Dobos	
	10/12	Sally, Mooney, Vetter, Hillyer	Gordon Lindberg, Darlene Kurtzwell	

10/12-10/13 Owens, Aquila, Sorrel, Piute, Bald Eagle, Lightner  
 10/12-10/13 Morris, Jenkins, Pinyon, Scodie  
 10/12-10/13 Thomas, Asbestos, Black  
 10/16 Lookout #2  
 10/19 Kitching  
 10/19-10/20 Split, Black, Sunday, Bohna  
 10/19-10/20 Deer, Shay, Little Shay, Ingham, Hawes, Round, Luna, Rattlesnake  
 10/26 Middle Hawkins, South Hawkins  
 10/26 Cahuilla, Little Cahuilla  
 10/26-10/27 Chaparrosa, Black #4, Bighorn, Meeks  
 10/26-10/27 Cleghorn, Cajon, Sugarpine, Monument, Pinnacles, Mt Mary Louise  
 10/26-10/27 Ryan, Lost Horse, Inspiration  
 10/26-10/27 Heart Bar, Sugarloaf Mtn, Granite Pk, Tiptop, Mineral  
 10/27 Strawberry, Lawler  
 10/27 South Hawkins

Alan Coles, Frank Goodykoontz  
 David Eisenberg, Luella Fickle  
 Asher Waxman, Minor White  
 George Schroedter, Papi Westhal  
 George Schroedter, Southern Courtney  
 David Eisenberg, Ruth Dobos  
 Patty Kline, Frank Goodykoontz  
 Barbara Cohen, Jim Raiford  
 Luella Fickle, Gordon Lindberg  
 Ruth Dobos, Frank Dobos  
 David Eisenberg, David Jensen  
 Leora Jones, Ron Jones, Minor White  
 Patty Kline, Frank Goodykoontz  
 Mary McMannes, Sherry Harsh  
 Vieve Weldon, Eivor Nilsson



### Index

10K Ridge	7/20-7/21, 9/14	Harwood	7/6, 7/21, 8/17, 9/14, 10/5	Rabbit #1	9/14
Alamo	9/28-9/29	Hawes	10/19-10/20	Rattlesnake	10/19-10/20
Anderson	7/20-7/21	Hawkins	8/3	Red Taquitz	9/28-9/29
Antimony	9/21	Heart Bar	10/26-10/27	Reyes Pk	9/28-9/29
Antsell	9/28-9/29	Hillyer	10/12	Ross	9/1
Apache	9/28-9/29	Ingham	10/19-10/20	Round	10/19-10/20
Aquila	10/12-10/13	Inspiration	10/26-10/27	Round Top	9/14
Arctic	9/28-9/29	Islip	9/15, 8/3	Ryan	10/26-10/27
Asbestos	10/12-10/13	Jean	7/13	Sally	9/7, 10/12
Baden-Powell	7/14, 8/10, 8/20, 9/1, 9/21, 10/5	Jenkins	10/12-10/13	San Jacinto	7/13, 7/27
Bald Eagle	8/17-8/18, 9/7-9/8, 10/12-10/13	Jepson	7/20-7/21	San Gorgonio	7/20-7/21, 9/7
Baldy	7/6, 7/21, 8/17, 9/14, 10/5	Josephine	8/10	San Sevaine	10/5
Bertha	9/28-9/29	Kitching	10/19	San Bernardino	7/20-7/21
Bighorn	7/14, 8/31, 9/14, 10/6, 10/26-10/27	Krakta Ridge	8/14	Scodie	10/12-10/13
Birch	9/22	Lake	7/20-7/21, 9/14	Sewart	9/28-9/29
Black #1	7/14, 10/12-10/13	Lawler	10/27	Shay	10/19-10/20
Black #4	10/26-10/27	Lightner	8/17-8/18, 10/12-10/13	Shields	7/20-7/21
Black #5	10/19-10/20	Little Shay	10/19-10/20	Silver	9/28-9/29
Bohna	10/19-10/20	Little Cahuilla	10/26	Smith	7/27, 8/21, 9/21
Buck Pt	10/5	Little San G	9/22	Snow Pk	9/7
Burnham	7/14, 8/11, 9/1	Lookout #2	10/5, 10/6, 10/16	Sorell	8/17-8/18, 9/7-9/8, 10/12-10/13
Cahuilla	10/26	Lost Horse	10/26-10/27	South	9/28-9/29
Cajon	8/31, 9/11, 10/26-10/27	Lowe	10/5	South Hawkins	8/3, 10/26, 10/27
Cannel Pt	8/17-8/18, 9/7-9/8	Luna	10/19-10/20	Spitzer	9/28-9/29
Castle Rocks	7/14	Marion	7/13	Split	10/19-10/20
Cedar	9/22	McDonald	9/28-9/29	Strawberry	10/27
Chaparrosa	10/26-10/27	McPherson	8/17	Sugarloaf Mtn	7/27-7/28, 8/3, 10/26-10/27
Charlton	7/20-7/21	Meeks	10/26-10/27	Sugarloaf Pk	8/31
Cleghorn	8/31, 9/11, 10/26-10/27	Middle Hawkins	8/3, 10/26	Sugarpine	8/31, 9/11, 10/26-10/27
Cornell	7/13	Mineral	9/28-9/29, 10/26-10/27	Suicide Rock	7/13, 7/14
Cucamonga	7/27, 10/6	Monument	10/26-10/27, 8/31	Sunday	10/19-10/20
Dawson	8/17	Mooney	9/7, 10/12	Sunset Pk	10/5, 10/6
Deer	10/19-10/20	Morris	10/12-10/13	Telegraph	8/17, 8/31
Delamar	9/28-9/29	Mt Mary Louise	10/26-10/27	Thomas	10/12-10/13
Dobbs	7/20-7/21	Ontario	8/31	Three Sisters	7/13, 7/27-7/28
Dragon's Head	7/14, 9/14	Onyx	7/27-7/28	Throop	7/14, 8/11, 9/1
East San Bernardino	7/20-7/21	Ortega Hill	9/28-9/29	Thunder	8/17, 8/31
Eagle Rest	9/21	Ortega Pk	9/28-9/29	Timber	8/17, 8/31
Etiwanda	7/27, 10/6	Owens	10/12-10/13	Tiptop	9/28-9/29, 10/26-10/27
Folly	7/13	Pleasant View Ridge	9/28, 10/12	Twin Peaks	7/20, 8/4, 9/14
Galena	8/3, 8/17, 9/22	Pallette	9/28, 10/12	Vetier	9/7, 10/12
Gold	9/28-9/29	Peak	8/17	Waterman	7/20, 8/4, 8/17, 9/14
Granite Pk	10/26-10/27	Pine	8/17	Will Thrall	9/28, 10/12
Granite #1	9/14, 9/28-9/29	Pinnacles	10/26-10/27	Williamson	8/14
Grinnel	7/20-7/21, 9/14	Pinyon	10/12-10/13	Wilshire Mtn	9/22
		Piute	8/17-8/18, 9/7-9/8, 10/12-10/13	Wilshire Pk	9/22
				Wilson	8/3
				Wright	8/17

## Latest Editions Of Peak Guides and Maps

by Brent Washburne

Pk#	Name	Date	MapCode	Date	Name	Date	MapCode	
1A	Sunday Pk	Apr 90	SST-1	Dec 90	7M	Cobblestone Mtn	Jun 90	ALT-3
1B	Bohna Pk	Dec 90	SST-1	Dec 90	7N	Ortega Hill	Dec 90	LPT-9
1C	Split Mtn	Mar 91	SST-2	Dec 90	7O	Ortega Pk	Jun 90	LPT-9
1D	Black Mtn #5	Apr 90	SST-2	Dec 90	7P	Chief Pk	Jun 90	LPT-11
1E	Cannel Pt	Apr 90	SST-3	Dec 90	7Q	Hines Pk	Mar 91	LPT-11 & 11A
1F	Morris Pk	Jul 90	SST-6	Dec 90	7R	Haddock Mtn	Jun 90	LPT-10
1G	Pilot Knob	Jul 90	SST-5	Dec 90	8A	Liebre Mtn	Jun 90	LRT-1
1H	Owens Pk	Mar 91	SST-6	Dec 90	8B	Bumt Pk	Jun 90	LRT-2
1I	Five Fingers (Aquila Pk)	Mar 91	SST-7	Mar 91	8C	Sawtooth Mtn	Jun 90	LRT-2
1J	Mount Jenkins	Mar 91	SST-6	Dec 90	9A	Mt Gleason	Jun 90	SGT-1
2A	Lightner Pk	Apr 90	SST-8	Dec 90	9B	Iron Mtn #2	Jun 90	SGT-1
2B	Bald Eagle Pk	Apr 90	SST-9	Dec 90	9C	Condor Pk	Jun 90	SGT-2
2C	Nicolls Pk	Apr 90	SST-4 & 4A	Dec 90	9D	Fox Mtn #2	Feb 91	SGT-2
2D	Onyx Pk #2	Jul 90	SST-20	Dec 90	9E	Mt Lukens	Jun 90	SGT-3
2E	Pinyon Pk	Apr 90	SST-13	Dec 90	10A	Mt Emma	Jun 90	SGT-4
2F	Scodie Mtn	Apr 90	SST-14	Dec 90	10B	Old Mt Emma	Dec 90	SGT-4
2G	Piute Lookout	Apr 90	SST-10	Dec 90	10C	Pacifico Mtn	Mar 91	SGT-6
2H	Sorell Pk	Apr 90	SST-11	Dec 90	10D	Bare Mtn	Mar 91	SGT-6
2I	Mayan Pk	Apr 90	SST-12	Dec 90	10E	Granite Mtn #1	Jun 90	SGT-5
2J	Butterbrecht Pk	Dec 90	SST-19	Dec 90	10F	Rabbit Pk #1	Jun 90	SGT-5
2K	Cross Mtn	Apr 90	SST-15	Dec 90	10G	Iron Mtn #3	Jun 90	SGT-5
2L	Chuckwalla Mtn	Apr 90	SST-15	Dec 90	10H	Round Top	Jun 90	SGT-5
2M	Heald Pk	Mar 91	SST-4 & 4A	Dec 90	10I	Mt Hilyer	Dec 90	SGT-6A
2N	Black Mtn #6	Mar 91	SST-16	Mar 91	10J	Cole Pt	Jun 90	SGT-4
2O	Red Mtn	Apr 90	SST-17	Dec 90	11A	Josephine Pk	Jun 90	SGT-7
2P	Skinner Pk	Jan 91	SST-18	Feb 91	11B	Strawberry Pk	Jun 90	SGT-7
3B	Black Mtn #3	Feb 91	TRT-1	Feb 91	11C	Mt Lawlor	Jun 90	SGT-7
3D	Double Mtn	Feb 91	TRT-2	Dec 90	11D	Barley Flats	Jun 90	SGT-8
3E	Tehachapi Mtn	Feb 91	TRT-2	Dec 90	11E	Mt Sally	Mar 91	SGT-8
4A	Brush Mtn	Apr 90	FPT-1	Dec 90	11F	Vetter Mtn (LO)	Mar 91	SGT-8
4B	San Emigdio Mtn	Apr 90	FPT-1	Dec 90	11G	Mt Mooney	Mar 91	SGT-8
4C	Eagle Rest Pk	Dec 90	FPT-3	Dec 90	12A	Mt Deception	Jun 90	SGT-9
4D	Antimony Pk	Jul 90	FPT-10	Dec 90	12B	Mt Disappointment	Jun 90	SGT-9
4E	Tecuya Mtn	Feb 91	FPT-4	Feb 91	12C	San Gabriel Pk	Jun 90	SGT-9
4F	Cerro Noroeste (Mt. Abel)	Apr 90	FPT-2	Dec 90	12D	Mt Markham	Jun 90	SGT-9
4G	Grouse Mtn	Apr 90	FPT-2	Dec 90	12E	Mt Lowe	Jun 90	SGT-9
4H	Sawmill Mtn	Apr 90	FPT-2	Dec 90	12F	Occidental Pk	Jun 90	SGT-10
4I	Mt Pinos (LO)	Apr 90	FPT-2	Dec 90	12G	Mt Wilson	Mar 91	SGT-10
5A	Caliente Mtn (LO)	Jan 91	LPT-1, 1A, 1B	Feb 91	12H	Mt Harvard	Jun 90	SGT-10
6A	Peak Mtn	Apr 90	LPT-2	Dec 90	13A	Winston Pk	Jun 90	SGT-11
6B	McPherson Pk (LO)	Dec 90	LPT-2 & 2A	Dec 90	13B	Ackawie Pk	Jun 90	SGT-11
6C	Fox Mtn #1	Apr 90	LPT-3	Dec 90	13C	Pleasant View Ridge	Jun 90	SGT-12
6D	Cuyama Pk (LO)	Apr 90	LPT-4	Dec 90	13D	Will Thrall Pk	Jun 90	SGT-12
6E	Lizard Head	Dec 90	LPT-4 & 4A	Dec 90	13E	Pallett Mtn	Jun 90	SGT-12
6F	McKinley Mtn	Apr 90	LPT-6	Dec 90	13F	Mt Williamson	Jun 90	SGT-12
6G	Santa Cruz Pk	Apr 90	LPT-6	Dec 90	13G	Mt Lewis	Dec 90	SGT-14
6H	San Rafael Mtn	Apr 90	LPT-6	Dec 90	13H	Pinyon Ridge	Jun 90	SGT-15
6I	West Big Pine	Jul 90	LPT-5	Dec 90	13I	Winston Ridge	Jun 90	SGT-11
6J	Big Pine Mtn	Apr 90	LPT-5	Dec 90	14A	Waterman Mtn	Jun 90	SGT-11
6K	Samon Pk	Dec 90	LPT-5A	Dec 90	14B	Twin Pks	Jun 90	SGT-11
6L	Maduice Pk	Dec 90	LPT-5A	Dec 90	14C	Mt Islip	Jun 90	SGT-13
6M	Hildreth Pk	Apr 90	LPT-7	Dec 90	14D	South Mt. Hawkins (LO)	Jun 90	SGT-13
6N	Monte Arido	Apr 90	LPT-8 & 8A	Dec 90	14E	Middle Hawkins	Jun 90	SGT-13
6O	Old Man Mtn	Apr 90	LPT-8 & 8A	Dec 90	14F	Mt Hawkins	Jun 90	SGT-13
7A	Frazier Mtn (LO)	Jun 90	FPT-5	Dec 90	14G	Throop Pk	Jun 90	SGT-14
7B	Lockwood Pt	Jul 90	FPT-6	Dec 90	14H	Mt Burnham	Jun 90	SGT-14
7C	San Guillermo Mtn	Jun 90	FPT-7	Dec 90	14I	Mt Baden Powell	Jun 90	SGT-14
7D	Reyes Pk	Jun 90	LPT-10	Dec 90	14J	Ross Mtn	Jun 90	SGT-14
7E	Thorn Pt (LO)	Jun 90	FPT-8	Dec 90	14K	Kratka Ridge	Jun 90	SGT-11
7F	San Rafael Pk	Jun 90	FPT-9	Dec 90	15A	Monrovia Pk	Jun 90	SGT-17
7G	Alamo Mtn	Jul 90	ALT-1	Dec 90	15B	Smith Mtn	Jun 90	SGT-17
7H	McDonald Pk	Jun 90	ALT-1	Dec 90	15C	Rattlesnake Pk	Mar 91	SGT-18
7I	Sewart Mtn	Mar 91	ALT-2	Dec 90	15D	Iron Mtn #1	Dec 90	SGT-18A
7J	Snowy Pk	Jul 90	ALT-2	Dec 90	15E	Lookout Mtn #2	Jun 90	SGT-19
7K	Black Mtn #2	Jun 90	ALT-2	Dec 90	15F	Sunset Pk	Jun 90	SGT-19
7L	White Mtn #2	Jun 90	ALT-3	Dec 90	16A	Circle Mtn	Jun 90	SGT-25
					16B	Wright Mtn	Jun 90	SGT-24

16C Pine Mtn #1	Jun 90	SGT-24	Dec 90	25D Wilshire Pk	Jun 90	SBT-28	Dec 90
16D Dawson Pk	Jun 90	SGT-24	Dec 90	25E Wilshire Mtn	Jun 90	SBT-28	Dec 90
16E Mt San Antonio (Baldy)	Feb 91	SGT-20	Feb 91	25F Little San Gorgonio Pk	Jun 90	SBT-28	Dec 90
16F Thunder Mtn	Mar 91	SGT-21	Dec 90	25G Galena Pk	Jun 90	SBT-29	Dec 90
16G Telegraph Pk	Feb 91	SGT-21	Dec 90	25I Kitching Pk	Feb 91	SBT-30	Feb 91
16I Gobbler's Knob	Jun 90	SGT-25	Dec 90	25J Snow	Jan 91	SBT-301	Feb 91
16J Mt Harwood	Mar 91	SGT-20	Feb 91	26B Quail Mtn	Mar 91	JTT-2	Mar 91
17A Sugarloaf Pk	Dec 90	SGT-21	Dec 90	26C Queen Mtn	Sep 90	JTT-3	Dec 90
17B Ontario Pk	Dec 90	SGT-21	Dec 90	26D Ryan Mtn	Sep 90	JTT-4	Dec 90
17C Bighorn Pk	Dec 90	SGT-21	Dec 90	26E Mount Inspiration	Feb 91	JTT-5	Feb 91
17D Timber Mtn	Jun 90	SGT-21	Dec 90	26F Lost Horse Mtn	Dec 90	JTT-5	Feb 91
17E Cucamonga Pk	Jun 90	SGT-22	Dec 90	26G Little Berdoo Pk	Jun 90	JTT-6	Dec 90
17F Etiwanda Pk	Jun 90	SGT-22	Dec 90	26H Bernard Pk	Jun 90	JTT-6	Dec 90
17G Buck Point	Dec 90	SGT-22	Dec 90	26I Warren Pt	Jun 90	JTT-1	Dec 90
17H San Sevaine	Jun 90	SGT-27	Dec 90	27A Ranger Pk	Jul 90	SJT-1	Dec 90
18A Santiago Pk (LO)	Jun 90	SAT-1	Dec 90	27B Indian Mtn	Jul 90	SJT-1	Dec 90
18B Modjeska Pk	Jun 90	SAT-1	Dec 90	27C Black Mtn #1 (LO)	Jul 90	SJT-2	Dec 90
19A Cleghorn Mtn	Jun 90	SBT-1	Dec 90	27D Castle Rocks	Aug 90	SJT-2	Dec 90
19B Cajon Mtn	Jun 90	SBT-1	Dec 90	27E Folly Pk	Mar 91	SJT-4	Dec 90
19C Sugarpine Mtn	Jun 90	SBT-1	Dec 90	27F San Jacinto Pk	Aug 90	SJT-4	Dec 90
19D Monument Pk #2	Jun 90	SBT-2	Dec 90	27G Cornell Pk	Aug 90	SJT-4	Dec 90
19E The Pinnacles	Dec 90	SBT-3	Dec 90	27H Jean Pk	Jul 90	SJT-4	Dec 90
19F Mt Marie Louise	Jun 90	SBT-3	Dec 90	27I Marion Mtn	Jul 90	SJT-4	Dec 90
20A Round Mtn	Jun 90	SBT-4	Dec 90	27J Suicide Rock	Sep 90	SJT-5	Dec 90
20B Luna Mtn	Jun 90	SBT-4	Dec 90	28A Lily Rock	Jul 90	SJT-5	Dec 90
20C Rattlesnake Mtn	Jun 90	SBT-8	Dec 90	28B Tahquitz Pk (LO)	Jul 90	SJT-5	Dec 90
20D White Mtn #1	Jun 90	SBT-8	Dec 90	28C Red Tahquitz	Jul 90	SJT-5	Dec 90
20E Deer Mtn	Dec 90	SBT-6	Dec 90	28D Southwell Pk (South Pk)	Jul 90	SJT-5	Dec 90
20F Shay Mtn	Jun 90	SBT-6	Dec 90	28E Antsell Rock	Jul 90	SJT-6	Dec 90
20G Little Shay Mtn	Jun 90	SBT-6	Dec 90	28F Apache Pk	Jul 90	SJT-6	Dec 90
20H Ingham Pk	Jun 90	SBT-6	Dec 90	28G Spitzer Pk	Mar 91	SJT-6	Dec 90
20I Hawes Pk	Jun 90	SBT-6	Dec 90	28H Palm View Pk	Mar 91	SJT-7	Mar 91
21A Crafts Pk	Jun 90	SBT-10	Dec 90	28I Cone Pk	Mar 91	SJT-7	Mar 91
21B Butler Pk (LO)	Jun 90	SBT-10	Dec 90	28J Pyramid Pk	Jul 90	SJT-7	Mar 91
21C Grays Pk	Jun 90	SBT-10	Dec 90	28K Pine Mtn #2	Jul 90	SJT-7	Mar 91
21D Little Bear Pk	Jun 90	SBT-11	Dec 90	28L Lion Pk	Jul 90	SJT-7	Mar 91
21E Delamar Mtn	Jun 90	SBT-11	Dec 90	28M Butterfly Pk	Mar 91	SJT-17	Mar 91
21F Arctic Pt	Jun 90	SBT-12	Dec 90	28N Rock Point	Mar 91	SJT-17	Mar 91
21G Bertha Pk	Jun 90	SBT-13	Dec 90	29A Rouse Hill	Jul 90	SJT-8	Dec 90
21H Gold Mtn	Jun 90	SBT-14	Dec 90	29B Little Cahuilla Mtn	Jul 90	SJT-10	Dec 90
21I Silver Pk	Jun 90	SBT-15	Dec 90	29C Cahuilla Mtn	Jul 90	SJT-10	Dec 90
22A Mill Pk	Jun 90	SBT-9	Dec 90	29D Thomas Mtn	Jul 90	SJT-9	Dec 90
22B Keller Pk (LO)	Jun 90	SBT-9	Dec 90	29E Lookout Mtn #1	Jul 90	SJT-13	Dec 90
22C Slide Pk	Jun 90	SBT-9	Dec 90	30A Asbestos Mtn	Jul 90	SJT-14	Dec 90
22D Sugarloaf Mtn	Jun 90	SBT-16	Dec 90	30B Sheep Mtn	Dec 90	SJT-15 & 15A	Dec 90
22E Heart Bar Pk	Jun 90	SBT-17	Dec 90	30C Martinez Mtn	Dec 90	SJT-15 & 15A	Dec 90
23A Bighorn Mtns	Jun 90	SBT-20	Dec 90	30D Santa Rosa Mtn	Aug 90	SJT-16	Dec 90
23B Granite Pks	Jun 90	SBT-21	Dec 90	30F Rabbit Pk #2	Jul 90	SRT-1	Dec 90
23C Tip Top Mtn	Dec 90	SBT-32	Dec 90	30G Villager Pk	Dec 90	SRT-2 & 2A	Dec 90
23D Mineral Mtn	Jun 90	SBT-32	Dec 90	30H Rosa Pt	Dec 90	SRT-2 & 2A	Dec 90
23E Meeks Mtn	Jun 90	SBT-20	Dec 90	31A Eagle Crag	Dec 90	SDT-1, 1A, 1B, 1C	Dec 90
23F Black Mtn #4	Jun 90	SBT-22	Dec 90	31C Boucher Hill (LO)	Sep 90	SDT-2	Dec 90
23G Onyx Pk #1	Jun 90	SBT-18	Dec 90	31D High Pt Palomar (LO)	Sep 90	SDT-3	Dec 90
23H Three Sisters	Jun 90	SBT-19	Dec 90	31E Beauty Pk	Feb 91	SJT-11	Feb 91
23I Chaparrosa Pk	Dec 90	SBT-31	Dec 90	31F Iron Springs Mtn	Dec 90	SJT-11	Feb 91
24A Constance Pk	Jun 90	SBT-23	Dec 90	31G Combs Pk	Feb 91	SJT-12	Feb 91
24B San Bernardino Pk	Jun 90	SBT-24	Dec 90	31H Hot Springs Mtn	Aug 90	SDT-4	Dec 90
24C San Bernardino E. Pk	Jun 90	SBT-24	Dec 90	31I San Ysidro Mtn	Mar 91	SDT-5	Mar 91
24D Anderson Pk	Jun 90	SBT-24	Dec 90	32A Granite Mtn #2	Jul 90	SDT-6	Dec 90
24E Shield's Pk	Jun 90	SBT-24	Dec 90	32B Whale Pk	Aug 90	SDT-7	Dec 90
24F Charlton Pk	Dec 90	SBT-25 & 25A	Dec 90	32D Middle Pk	Jul 90	SDT-8	Dec 90
24G Jepson Pk	Dec 90	SBT 25 & 25A	Dec 90	32E Cuyamaca Pk (LO)	Jul 90	SDT-8	Dec 90
24H Dobbs Pk	Dec 90	SBT 25 & 25A	Dec 90	32F Stonewall Pk	Jul 90	SDT-8	Dec 90
24I San Gorgonio Mtn	Dec 90	SBT-25 & 25A	Dec 90	32G Oakzanita Pk	Jul 90	SDT-9	Dec 90
24J 10,000 Ft Ridge	Dec 90	SBT-26	Dec 90	32H Garnet Mtn	Jul 90	SDT-10	Dec 90
24K Lake Pk	Jun 90	SBT-26	Dec 90	32I Garnet Pk	Jul 90	SDT-10	Dec 90
24L Grinnell Mtn	Jun 90	SBT-26	Dec 90	32J Monument Pk #1	Jul 90	SDT-11	Dec 90
25A Allen Pk	Jun 90	SBT-27	Dec 90	32K Cuyapaie Mtn	Feb 91	SDT-12	Feb 91
25B Birch Mtn	Jun 90	SBT-28	Dec 90	32L Sheephhead Mtn	Feb 91	SDT-13	Dec 90
25C Cedar Mtn	Jun 90	SBT-28	Dec 90				

## HPS Membership As of April 1, 1991

by Charlie Knapke

Current membership: . . . . 405  
 Overdue membership: . . . . . 0  
 Active membership: . . . . . 405  
 Honorary membership: . . . . . 1  
 Total HPS membership: . . . 406  
 Subscriptions only: . . . . . 30

### Roster

① = 100 Peaks Emblem  
 ② = 200 Peaks Bar  
 ★ = List Completion(s)  
 ⚡ = Pathfinder Emblem  
 ⚡ = Leadership Award  
 Leader rating shown in braces {}

Jim Adler ★  
 Shirley Akawie ★★  
 Mark T. Allison ①  
 Lew O. Amack ★⚡⚡  
 Tom Amneus ★  
 David Anderberg  
 Jorg Angehm  
 Richard L. Anglin Jr.  
 Elsie Orba Arbuckle ②{O}  
 Lynda Armbruster  
 Tom Armbruster ★{O}  
 Murray J. Aronson  
 Terri Astle ★{I}  
 Donald A. Austin Jr.  
 Stephen K. Bache  
 Bob Baird  
 Hugh M. Baker ★  
 Mike Baldwin ①  
 Lois Banda  
 Kathie Bantz ②  
 Ron Bartell ★  
 John D. Bascom ②  
 Wynne Benti  
 Edmond P. Bergeron  
 David Beymer  
 Mary Bihl ②  
 Christy L. Bird ★  
 John A. Blanche ★{M}  
 Albert S. Blatz  
 Paul A. Bloland ★{E}  
 Ruth Bloland  
 Matthew Bond  
 James Bonner ①  
 Suzanne J. Booker  
 Raymond Borun ★  
 Ruth Borun ①  
 Charles Brac ①  
 Janet B. Brandenburg  
 Graham H. Breakwell ①{I}  
 Walter Louis Brecheen ★{I}  
 Joy Brooks  
 Judith Brooks  
 Jacques Brosseau ①{O}

Nami Brown  
 Robert T. Brown  
 Stagalee Brown ①{O}  
 Andrew G. Brits  
 Phil Bruce ★{M}  
 Harry B. Brumer ★{M}  
 Roger V. Burry  
 Alice M. Cahill ②  
 Elmer L. Cain ①{M}  
 Roy Camarillo  
 Gary Campbell ①  
 Marianna P. Camphausen ①  
 Charles Capraro  
 Eleanor Carter ★  
 William Carter ①  
 Bob Cates ②{O}  
 Maureen Cates ①  
 Kathy Cecerce ①{O}  
 Kathleen Cejka ①  
 John Cheslick ★{I}  
 Richard Clement ①  
 Patricia Cline  
 Gene Clinger ②  
 Pam Cloutier  
 Barbara Cohen ★{I}  
 Elisabeth Cohen ②{M}  
 Gary S. Cohen ①  
 Edmund R. Cokeley ②  
 Alan Coles ★★{I}  
 Janet Coles  
 Bob Colvin  
 Francis D. Cooke  
 Charles Corp ①  
 Louise Corp  
 Southern Courtney  
 Al Craun ①  
 Carolyn Croker ①{O}  
 Kenneth Croker ★{M}  
 Paul F. Daly  
 Evelyn Davis ①{M}  
 Lloyd S. Davis ②  
 Sid "San Jac" Davis ②{M}  
 Kathy Day ②  
 John De Phillippo  
 Doug Demers  
 Sandra Owens Dennison  
 Frank Dobos ★★⚡⚡{I}  
 Ruth Lee Dobos ★{O}  
 Peter H. Doggett ②  
 Katherine Donaldson  
 Bob Doyle ①  
 Gerry R. Dunie ①{O}  
 Doris C. Duval  
 Lola F. Edmiston  
 Harriett C. Edwards  
 David Eisenberg ★{I}  
 Bob Ellis  
 Robert M. Emerick ★★  
 Elizabeth Epstein  
 Edna Erspamer ★★{M}  
 Leonard Espinda  
 Paul Etner  
 Susan Etner  
 Barbara Eyerly

Howard Eyerly  
 Burton A. Falk ★  
 Richard J. Farrar ★  
 William H. Faulkner ②  
 Martin S. Feather ★★⚡  
 Charlotte Feitshans  
 Erich Fickle ①{O}  
 Luella Martin Fickle ★★⚡⚡{I}  
 Robert M. Fielding ①  
 R. Sam Fink ★★{E}  
 Jim S. Fleming ②  
 Rick Fleming ①  
 Michael Fredette ★★  
 Paul Freiman ★  
 Calvin French ①{E}  
 Francis French  
 Louise M. French ①{E}  
 Jim Fujimoto ★  
 Ann Fulton  
 John N. Fulton  
 Isabelle Gat  
 Greg Gerlach ②  
 Russell Glavis ①  
 Geoff A. Godfrey ②  
 Alice H. Goldberg ★{I}  
 Jack Goldberg ★{I}  
 Joel Goldberg  
 Mario Gonzalez ①  
 Frank Goodykoontz ★★☆☆★ {M}  
 Hazel Goodykoontz  
 Matt Gorman  
 Jack C. Gramms ★  
 Michael Graziano  
 Carl G. Grimes Jr.  
 Susan Gunn  
 Jack Haddad ②  
 Daniel J. Hall  
 David Hammond ①  
 Gail W. Hanna ★  
 Jan Hartsell  
 Robert T. Hartunian  
 Doug Hatfield ①  
 Alice Hawkins ★{M}  
 Mitchell Helbrecht ①  
 Bill Henderson ①  
 Bob Henderson  
 Victor T. Henney Jr. ★  
 Marta Hethmon  
 Robert H. Hethmon  
 Bill Heubach  
 Henry Heusinkveld ②{M}  
 Robert S. Hicks ①  
 Mark Hodgson ①  
 Barry W. Holchin  
 Allen Holden ★  
 Lynn Ellen Holden ②  
 Don W. Holmes ★{M}  
 Robert L. Hornberger ②  
 George Hubbard ★{O}  
 Carolyn M. Huestis ①  
 Laren Jacobsen  
 David F. Jensen ②  
 Fred Johnson  
 Glenn Johnson ①

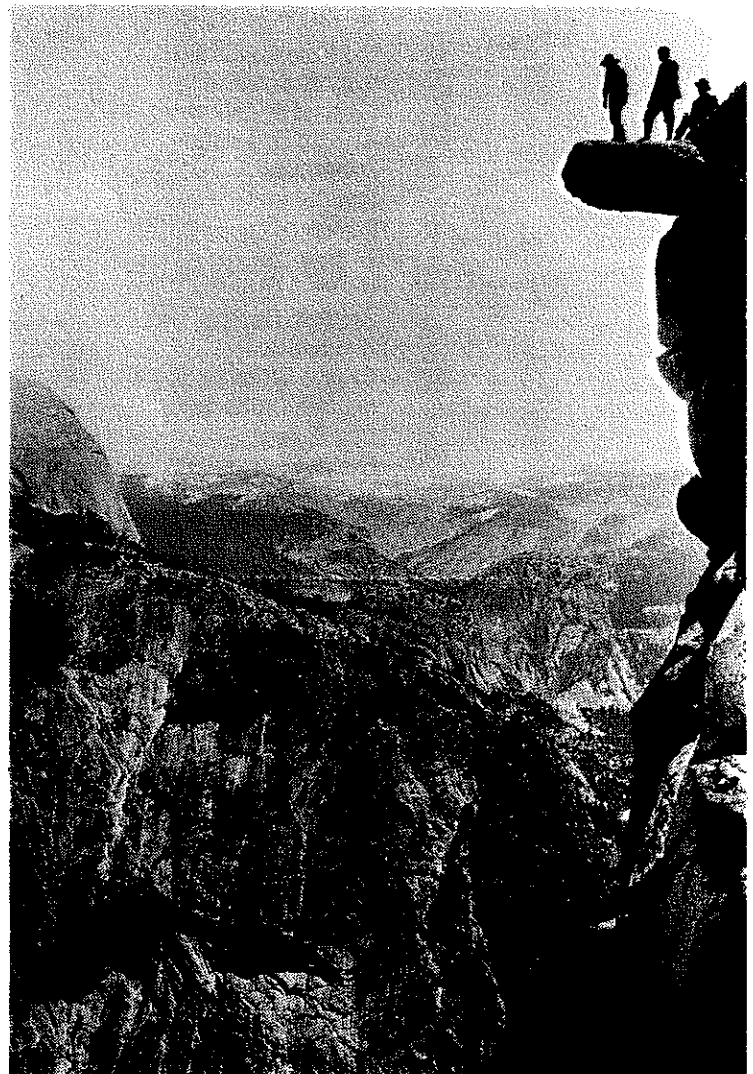
Carolyn B. Jones  
 K. Jane Jones ①  
 Kenneth Jones ②  
 Leora Stoier Jones  
 Phillip (Greg) Jones  
 Ron Jones ★  
 Pat Jump ★  
 Walton Kabler ①  
 Talbert Kanigher ①  
 Bob Kanne ①  
 Debbie Kazlowski ★  
 Joseph Kazlowski ★  
 Jerry J. Keating ★  
 Nancy A. Keating ①  
 Michael Kelly ①  
 James Kilberg ①  
 Randal R. King  
 Peter Kinman  
 Leslie Kleinman ②  
 Patty Kline ②⚡  
 Charlie Knapke ★⚡{I}  
 Bruce Knudtson  
 Jeffrey W. Koepke ①  
 Stephen R. Koletty  
 James Kuivinen ②  
 Lars Lae Evensen  
 Jennifer Lambiet  
 Brenda Landau  
 Jason Landau  
 Joseph Landau ①{M}  
 Kenny Landau  
 Marilyn Langford  
 Raiford Langford  
 Stephen D. Langley ★  
 Rob Langsdorf  
 Gary S. Larson  
 Edward A. Levesque  
 Vera Levesque  
 Bill Lien  
 Barbara Lilley ★{E}  
 Gordon Lindberg ★  
 Alan Lopez  
 Donald J. Lum ①  
 Peter Lyman ①  
 Fred Lytle  
 Kay Machen ★{M}  
 Gordon J. MacLeod ★  
 Peter R. Mann ①  
 Sarah Mann  
 Peter Mann Jr.  
 Douglas Mantle ★★  
 John S. Marsh  
 Sally Marsh  
 Robert R. Marshall ①  
 Chris Martin  
 Jack Martin  
 Jane Martin ①  
 Keith Martin  
 Rodger Maxwell  
 Ursula Mayer  
 John McCully  
 Wendy McCully  
 John E. McDermott ①  
 Kenneth E. McEivaney

Shirley McFall ★  
 Joy McKinney  
 Jeane McLellan  
 Richard McLellan ②  
 Donald McLellan Jr. ①  
 Donald McLellan Sr. ②{M}  
 Mary McMannes  
 Claire E. McQuillian  
 Betty McRuer ①  
 Duane McRuer ★{O}  
 Charlotte Ann Meador  
 Robert Meador ②  
 Brent Mercer  
 Leslie Metcalfe ①  
 Franklin Meyers ①  
 Bob Michael ②  
 David Michels  
 Lynne Miller  
 Susan Miller  
 Terry Morse ①  
 Mary Gugax Motheral ②  
 Rosina Mueller  
 Gary Murta ②  
 Byron A. Myhre ①  
 Jean Nelson  
 Eivor Nilsson ★{M}  
 Roy S. Nishida  
 Wayne Norman ①  
 Marcia E. Nunns  
 Cindy Okine ★  
 Bill A. Oliver  
 Jimmy Joe Oliver  
 Gene Olsen ★  
 Charles A. Owen ②{M}  
 Vivian Owen ②  
 Dorothy M. Pallas ②  
 Monica Parker ①  
 John Paulson  
 Susan Pease  
 Barbara Pederson  
 Bruce Peterson ①  
 James Peterson ①  
 Paula Peterson ①  
 George Pfeiffer ★  
 M. Gene Pinel  
 Charles Pospishil  
 Fran Potaski  
 Rick Potter ★  
 Sandra Potter ★  
 Betty Snow Quirarte ①{O}  
 Louis Anthony Quirarte ①  
 Jim Raiford ★  
 Scott Rasmussen ①  
 Marc Ratner  
 Gabrielle Rau  
 Barbara Reber ★{M}  
 Les Reid ①{O}  
 Sally Reid ①  
 Dick Reynolds  
 Art Rich ①  
 Dennis Richards  
 Dan Richter  
 Waltraud Ringeler  
 John G. Ripley ②

Millie Rivero  
 Dorothy Robinowitz ②  
 John W. Robinson ①  
 Diane Rosentreter ①  
 Diana Roth  
 Bill T. Russell ★★  
 F. William Russell ①  
 Stephen T. Russell ①  
 Charles A. Sale  
 Evan J. Samuels ★  
 Michael D. Sanford  
 Richard Schamberg ①  
 Robert L. Schneider ②  
 George Schroedter ①  
 William J. Schuler ①  
 Bob Schull ①  
 Janis Schull ②  
 Janet A. Scott  
 William R. Scott ①  
 Mickey Sharpsteen ★  
 Carleton Shay ★★☆☆{M}  
 Hanna Shay ①  
 Wesley E. Shelberg ★  
 Benjamin Sheldon  
 Jon Sheldon ★{I}  
 Larry K. Shumway ②  
 Carl P. Siechert  
 William Siegal  
 Eric T. Sieke ②  
 Erik Siering ①  
 Eloise I. Sime ①  
 Maggie Singleton  
 Joan Sinsheimer ②  
 Carol Smetana ①  
 Arthur D. Smith ★  
 Francis Smith ★  
 George F. Smith ★  
 Jean F. Smith ①  
 John F. Southworth ★★  
 Ira George Spicer ①  
 Chuck Stein  
 Tina Stephens ★  
 David R. Stepsay ②  
 Betty Sterrett ①  
 Karen Nikisher Stewart ②  
 Roy R. Stewart ★  
 Austin Stirratt ★  
 Betty Bergy Stirratt ★★  
 John Strauch ①  
 George R. Stuart ②  
 Walter Studhalter  
 Bob Sumner ②  
 Marie Louis Swain  
 Robert J. Talbert  
 Donald P. Taylor  
 Lois P. Taylor  
 Virginia H. Terry  
 Mickey Thayer ★  
 George Thomas ①  
 Bobcat Thompson ★☆☆  
 J. P. Throgmorton  
 Willis A. Thurston  
 Larry Tidball  
 Richard K. Todd

Jack Trager ★★☆☆  
 Phyllis Trager ①  
 Charles A. Trilling  
 Dale Van Dalsem ★  
 David Vandervoet ①  
 Wesley A. Veit ★{E}  
 Charles C. Vernon ①  
 Pamela H. Walker  
 Betty C. Ward ①  
 Monalisa Ward  
 Roy L. Ward ②  
 Brent Washburne ★{M}  
 Brenton Clarke Washburne ①  
 Robin Washburne ①  
 Devra Wasserman  
 Laura Webb ②  
 Roger Weingaertner ①  
 Philip Weinrich Jr. ①  
 Lee Weir  
 David Welbourn ★★  
 Eleanor West ①

Robert N. Wheatley ①  
 Bryce Wheeler ①  
 Phillip Wheeler  
 Wilma Curtis Wheeler ①  
 Walter C. Whisman ①  
 Minor White ★  
 Bill Whities  
 Patrick V. Wlodarczak  
 Annick Wolf  
 Donica Wood ②  
 Lucy Woodward ①  
 Robert M. Wright Jr. ①  
 Robert J. Wyka ★{M}  
 Susan Wyman ①  
 Pete Yamagata  
 Jane I. Yamamoto  
 John Young  
 Joseph F. Young ★☆☆{M}  
 Ronald A. Young ★  
 Jim Zeile  
 John E. Zeile Jr.



Overhanging Rock, Glacier Point, Yosemite, 1896  
 Photograph by Joseph N. LeConte  
 Courtesy of William E. Colby Memorial Library, Sierra Club

# HPS MERCHANDISE & MEMBERSHIP ORDER FORM

**Peak Guides**

**Bob Thompson:** P.O. Box 633, Montrose, CA 91021 **Please send me** the following HPS Guides:

- HPS Peak List:** Send \$1.00 with your SASE.
- Complete Set of Official HPS Peak Guides:** *Unbound with punched holes. \$28*  
4th class postage included in the price. (For 1st class postage, add \$1.50 for each set.)
- Complete Set of HPS Topo Maps:** *Unbound with no holes. \$15*  
4th class postage included in the price. (For 1st class postage, add \$1.50 for each set.)
- Separate Individual HPS Peak Guides:** Send the peak number from the HPS Peak List, 20¢ Each, and postage as follows:  
ONE TO THREE GUIDES: Enclose a business size SASE & one 1st class stamp.  
FOUR TO NINE GUIDES: Enclose a business size SASE & two 1st class stamps.  
TEN OR MORE GUIDES: Enclose a 9"x12" SASE & one 1st class stamp for every five.

**Merchandise**

**Alan Coles:** 5637 Keynote St., Long Beach, CA 90808 **Please send me** the following Official HPS Items:

**Merchandise List:**

*(Postage is included unless otherwise noted. Save on postage by purchasing your items at the HPS meetings.)*

**Patches:** (Include a 29¢ SASE) HPS Membership—\$2.00; HPS Emblem (Outside Wreath)—\$1.50

**Pins:** (\$1.00 postage is included in the price.)

- HPS Emblem Pins—\$10.50
- HPS 200 Peaks Bars—\$6.50
- HPS List Completion Pins—\$9.00
- HPS Pathfinder Emblem Pins—\$15.00

**HPS T-shirts:** Small(S), Medium(M), Large(L), or X-Large(XL) **\$9.75** (\$2.00 postage is included in the price.)

**Blue** (S, XL); **White** (M, L, XL); **Grey** (M, L, XL); **Gold** (S, M, XL); **Turquoise** (S, M, L, XL); **Yellow** (XL)

*(Please specify an alternate choice of colors on the order form.)*

**1989 Octoberfest T-shirts** (S, M, L)—\$7.00

**HPS Mugs with Gold Emblem:** Small Blue—\$7.00 or Large Black—\$8.00. *(HPS mugs are now available only at the meetings.)*

*There is a special 2 for 1 Mug offer for a limited time only!*

Item	Quantity	Size	Unit Price	Total

Please make all checks payable to the HUNDRED PEAKS SECTION.  
*(Please include your phone number and mailing label or SASE with each order.)*

**Total:** \$

**Membership**

**Charlie Knapke:** 13176 Ferndale Drive, Garden Grove, CA 92644

*All membership applicants must supply their Sierra Club number. (not required for subscription only) New member applicants should include a list of peaks together with dates climbed. All Lookout subscriptions can be paid a maximum of 3 years in advance. (unless accompanied by an equal amount as a donation) Your expiration date appears on the address label. Only 1 subscription is required per household. When renewing your membership, please list all other HPS members who reside at your address to update their status. Make checks payable to the HUNDRED PEAKS SECTION. (Membership dues are not tax deductible.)*

- New Membership       Membership Renewal       Subscription only
- I am enclosing \$ \_\_\_\_\_ at \$9.00/year for \_\_\_\_\_ year(s) plus \$ \_\_\_\_\_ donation.
- I am enclosing my list of 25 peaks climbed including dates.

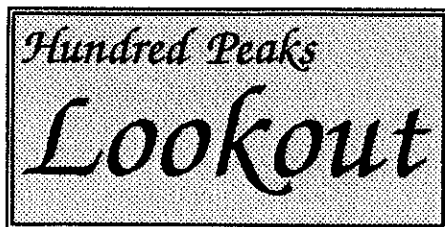
Name: \_\_\_\_\_ Sierra Club Number: \_\_\_\_\_

Address: \_\_\_\_\_

City: \_\_\_\_\_ State: \_\_\_\_\_ Zip: \_\_\_\_\_

Home Phone: \_\_\_\_\_ Work Phone: \_\_\_\_\_

Optional Birthday (Month/Day) \_\_\_\_\_ Leader Status: **O I M E**



The Hundred Peaks Lookout is published bi-monthly by the Hundred Peaks Section of the Sierra Club, Angeles Chapter.

The Lookout is produced on an Everex AT compatible computer and HP LaserJet IIP using Wordperfect 5.1 and a PostScript Cartridge.

### Subscriptions

Subscription to the Lookout is a requirement for active membership in the Hundred Peaks Section. **Dues must be paid before March 31 to avoid delinquency.** Renewals, changes of address, and new members should send form on reverse side and any remittance (payable to: "Hundred Peaks Section") to:

☒ **Membership Committee Chair: Charlie Knapke, 13176 Ferndale Drive, Garden Grove, CA 92644.**

Non Members may also Subscribe by sending \$9.00 indicating subscription only to:

☒ **Membership Committee Chair: Charlie Knapke**

### Articles and Letters

This publication is the official newsletter of the Hundred Peaks Section and welcomes articles, letters, and photographs pertaining to the activities of the section. Mail submissions to:

☒ **Lookout Editor: David Eisenberg, 510 N. Maryland Ave. #307, Glendale, CA 91206.**

{**Mailer: Julie Rush, 2432 Hidalgo Street, Los Angeles, CA 90039.**}

### Deadline for Publication

Please send photographs, drawings, ASCII disks, or typed **single-spaced** copy to the editor. **Please use letter quality if you have a dot matrix printer.** Handwritten articles will **NOT** be accepted. The deadline for receipt of materials is the first day of even numbered months. Include a SASE if you would like to have your submissions returned to you.

### Peak Accomplishments

25 peaks for qualifying section membership

Emblem status accomplishments:  100 peaks,  200 peaks, and  completed peak list;  Pathfinder; and

Leadership. (*One year membership in the HPS is required for emblem status.*)

Send lists of peaks and dates qualifying for membership or emblem status to:

☒ **Membership Committee Chair: Charlie Knapke**

Hundred Peaks

## Lookout

The Sierra Club  
3550 West Sixth Street #321  
Los Angeles, CA 90020

NON-PROFIT ORG  
U.S. POSTAGE PAID  
LOS ANGELES, CA  
PERMIT NO. 36438