

THE LOOKOUT

OFFICIAL NEWSLETTER OF THE HUNDRED PEAKS SECTION
V60 N3 May - June 2023



Welcome to HPS, WTC Students!



Photos by Sharon Moore

HPS Lookout Newsletter

Table of Contents



Table of Contents	Page 2
Hundred Peaks Section Lookout Newsletter Subscription Form.....	Page 2
Letter From The Chair, by James Hagar	Page 3
Navigation Corner, by Robert Myers, LTC Navigation Chair	Page 4, 5
HPS Membership Report by Steve Russell.....	Page 5
Summits	Page 6..
Leader Contact Information.....	Page 7
HPS 2022 Management Committee.....	Page 7
Advance Schedule of Hundred Peaks Section Activities,by Mat Kelliher	Pages 8 - 10
Smith Mountain Hike, Sunny Yi, Jason Park.....	Page 11
Liebre Mountain Hike, Ron Cambell.....	Page 12..
Strawberry Peak Hike. by Peter and Ignacia Doggett.....	Page 13
Backbone Trail Hike, by Bill Simpson	Page 14
San Ysidro Muntain, by Steve Russell.....	Page 15
Sierra Club Chapter Banquet, by Mark S. Allen	Page 16
HPS Historical Photos, by Bob Cates.....	Page 17
Summits.....	Page 18
March 8, 2023 MCOMM Meeting.....	Page 19
Hiking Photography by Jin Oak Chung.....	Page 20

Hundred Peaks Section (HPS) Lookout Subscription Form

(There are no prerequisites to become a subscriber)

Name (or names if household)					
Street Address					
City		State		Zip	
Phone		Email			
Sierra Club Membership No. (required for new members)					

IF YOU WISH TO BECOME A MEMBER, PLEASE SEND A LIST OF 25 PEAKS YOU HAVE HIKED THAT ARE ON THE HPS LIST, with the month and year of the peak completion. (See the HPS Website, for a list of the 275 or so HPS peaks.)

All rates are for 6 issues/year, delivered electronically.

Basic Subscription: \$9 for 1 year, \$17 for 2 years, \$24 for 3 years

Sustaining Subscription (helps to cover other section expenses): \$20 for 1 year, \$39 for 2 years, \$57 for 3 years

Lifetime Subscription: \$500

Amount enclosed \$ _____

HPS Subscription email address: lookout_membership@hundredpeaks.org

Mark S. Allen

Lookout Editor

11321 Foster Road

Los Alamitos, CA 90720

Letter From The Chair

Hello hikers!

So the rain has stopped but the heat is beginning. We had spectacular wildflowers this year and I hope you got out to enjoy them.

I'd like to give a thank you to the leaders to organized the HPS Intro Hikes. We had a number of new people, particularly WTC students, who attended. I think we made a good impression on them and I hope some of them will continue to join us in the future, and even become members.

The Spring Fling in Idyllwild came off nicely and was enjoyed by a sizable group. Once again thank you to the leaders for this.

Take a look at the mountain records report. Angeles Crest Highway is closed from Redbox and may remain closed for several more months due to road damage. Highway 33 in Ojai is also closed and will remain closed, probably for a year or so. As a result of this, the peaks Hildreth, Old Man and Monte Arido are suspended. Other peaks in that area remain accessible, however.

The Waterman Rendezvous has been cancelled because of the closure of Angeles Crest Highway. It will probably be rescheduled for the Fall look for a future announcement.

Lastly, a reminder to send in reports and photos of their adventures to publish in the Lookout. We are delighted to have them and they are much appreciated. It's not a lot of work and you'll get your name on print and photo credit for your photos.

Keep getting out there and enjoying life!

Jim Hagar, Chair, and the Management Committee

THE NAVIGATION CORNER: KNOW HOW TO USE YOUR GPS

By Bob Myers, LTC Navigation Chair

Modern mountaineers have a broad set of tools to accomplish the two key objectives of navigation: First, they need to know where they are and how to get to their objective and back safely. Second, they need to be able to communicate with emergency responders should the need arise. The modern tools of navigation allow the mountaineer to accomplish both objectives with far more confidence than in the past.

Mountaineering: Freedom of the Hills, 9th ed. 2017, p. 90.

Mountaineering: Freedom of the Hills (9th ed. 2017) contains essential information for those venturing into the backcountry. Its coverage ranges from basic information on using a compass and reading a topographic map to advanced topics such as how altimeters aid mountaineers.

Of particular interest is its discussion of GPS devices, including tips for using mobile phones. The below table provides an excellent summary of the workflow for the use of GPS devices.

TABLE 5-5. NAVIGATION WORKFLOW WITH GPS DEVICES

Modern navigation tools offer climbers more certainty, but coordinating map, altimeter, compass, and GPS requires careful work. It is helpful to think of this effort as a workflow that begins at home, continues at the trailhead and en route, and then wraps up after the trip.

AT HOME AND/OR WHILE STILL CONNECTED TO THE INTERNET

1. Research routes from guidebooks and other sources.
2. Purchase relevant topographical maps, if available and time allows. Otherwise, download topographical maps from the internet. Customize them with collected routes, tracks, waypoints, and notes, and then print. Be sure the map includes the data, such as the UTM grid, that you will need.
3. Download helpful maps and satellite images to a GPS device at the appropriate level of detail. Include an area that surrounds the intended travel area in case plans change; the larger map can be at a lower level of detail if storage space is an issue.
4. Research weather trends, road and trail conditions, and avalanche conditions (see Chapters 6, Wilderness Travel, and 17, Avalanche Safety).
5. Confirm that electronics are ready: data downloaded, batteries charged, PLBs registered and the preset ("canned" or user-definable) messages on satellite communicators updated (see "Communication Devices" later in this chapter).
6. Leave the trip itinerary, including trailhead, vehicle description, and license plate, with a responsible person (see "Organizing and Leading a Climb" in Chapter 22, Leadership).

AT THE TRAILHEAD

1. Confirm the party is at the right place to begin the climb: Orient the map to the surroundings—do they correlate? Confirm using GPS.
2. Set a GPS waypoint at the trailhead.
3. Set the GPS device's datum to match that of the physical map.
4. Have the party calibrate all barometric-based altimeters to the trailhead elevation using a map or GPS device.
5. Note magnetic declination, and adjust compasses as needed. (See "Magnetic Declination," earlier.)
6. Turn off electronics or configure them to extend battery life to last the length of the trip.

EN ROUTE

1. Actively engage the entire party in navigation, including assessing whether the current position and planned path through the landscape continue to appear safe and can be correlated to the map using multiple navigation tools. (See "The Importance of Maintaining Situational Awareness" sidebar, earlier.)
2. Familiarize the party with the appearance of the return trip.
3. Occasionally recalibrate barometric-based altimeters at known locations shown on map or a GPS device.
4. Gather GPS waypoints and tracks en route if they may be helpful later, especially if the party may need to renegotiate complex terrain.

AFTER THE TRIP

Gather together and organize all the digital and physical navigation information that will help the party—or the next climbing party—safely navigate the same area on another trip.

It is important that you know how to use your GPS device and do not blindly follow it into a navigation blunder. The internet is full of examples of people who made major blunders with their GPS devices (see <https://tinyurl.com/55an52pu>), some resulting in fatalities. By knowing how to use your GPS device, you can avoid infamy of making a major GPS blunder.

Upcoming Navigation Noodles

June 10, 2023	Mt. Pinos, LPNF
September 23, 2023	Mt. Pinos, LPNF
December 2-3, 2023	Mission Creek Preserve

If you have any questions, contact me at rmmyers@ix.netcom.com.

HUNDRED PEAKS SECTION MEMBERSHIP REPORT

May/June Lookout Issue, Steve Russell, HPS Membership Chair

This report covers emblems achieved since the last Lookout and cases where reporting was missed.

New Emblems

None

New Member

Robert Kunc

Reminder to subscribers, if you are a Sierra Club member and have climbed 25 peaks on the official HPS list, then you can apply for membership into the section. Send your list of peaks climbed with dates, and your Sierra Club membership number to: look-out_membership@hundredpeaks.org.

Membership Stats

Members: 187

Life and Honorary Members: 20

Subscribers: 9

Total: 214



Bill Simpson

Bill Simpson, Ron Campbell, Sharon Moore Leaders on Introductory Hikes for WTC Students.



Sunny Yi on Combs Peak



Cover Photos by Sharon Moore, from April 15th Liebre Mountain hike welcoming WTC Members to the Hundred Peaks Section of the Sierra Club.



Jae Kim on the Camino de Santiago

LEADER CONTACT INFO

Following is contact information for Leaders who are offering outings in this edition of The Lookout. When signing up for an outing, follow the instructions given in the trip listing to find out about meeting time and location.

Lidia Barbosa	(310) 904-3662	lidia.barbosa3@gmail.com
James Hagar	(818) 468-6451	jhagar1@gmail.com
Jim Hoyt	(760) 954-8120	jhoyt@mscomm.com
Robert Kunc		slowtrudge@gmail.com
Sharon Moore	(562) 494-3081	justslm@earthlink.net
Robert Myers		rmmyers@ix.netcom.com
Ann Pedreschi		apedreschi@sbcglobal.net
Larry Pond	(424) 254-6873	larryhikes17@yahoo.com
Bill Simpson	(323) 683-0959	simphome@yahoo.com

-oOo-

2023 MANAGEMENT COMMITTEE

Elected Members:

James Hagar- Chair (12/2023)

1621 Marion Drive, Glendale, CA 91205
jbagiul@gmail.com

Sharon Moore-Vice Chair (12/20/23)

Mark S. Allen- Secretary, (12/2024)

Lookout Newsletter Editor

HPS Merchandise Chair

11321 Foster Road
Los Alamitos, CA 907120
mallen434l@outlook.com

George Christiansen, Mountain Records Chair, (12/2023)

12702 Grove-Aew Street
Garden Grove, CA 92840
H: 714-636-0918
g.m.christiansen@me.com

Ron Campbell, Outreach (12/2024)

Larry Pond, Mountain Records Co-Chair (12/2024)

Lidia Barbosa- Member At Large (12/2024)

Appointed Members:

Laura Newmam, Treasurer hptreas@gmail.com

Mat Kelliher- Outings & Safety Chair

Steve Russell- Membership, Appointed

Coby King, Elections Chair,
Facebook Administrator, Awonted
cohjlk@cohjking.com

Tanya Roton, Nominations Committee
tanya.roton@gmail.com

Wayne Vollaire, The Lookout Mailer

2035 Peaceful Hills Road, Walnut, CA
91716-94009 Home: 909 327-6825

Appointed Members:

Jim Fleming, Co-Chair, **Safety Adopt-a-Highway**

538 Yam: 111 Drive
Simi Valley, CA 93065-7352
jimf333@att.net

Joe Young, Historian

12551 Presnell Street
Los Angeles, CA
90066-6730H: 310-822-9676
thehikajee@gmail.com



Sharon Moore

Advance Schedule of Hundred Peaks Section Activities
May - June 2023
Mat Kelliher, HPS Outings Chair

The following is a listing of all HPS Outings submitted and posted to the Angeles Chapter online Schedule of Activities as of May 22, 2023. These outings cover the period ranging from May 24 through Dec 2, 2023. Note that **new HPS outings are added to the online schedule of activities (aka "Campfire Events") all the time**, often only a few days prior to when a trip is scheduled, so if you haven't found what you're looking for in this edition of The Lookout, be sure to check for newly added outings on the HPS online Schedule of Activities frequently for last minute additions. Follow this link to the HPS Schedule of Activities site:

<http://www.hundredpeaks.org/outings.htm>

And if you're still looking for something other than what's being offered on any given day with HPS, check out the Angeles Chapter online Schedule of Activities (Campfire Events) for a selection of outings options offered by all the various Groups, Sections, and Committees of the Angeles Chapter. The Angeles Chapter Schedule of Activities is located here:

<http://angeles.sierraclub.org/activities>

HPS outings are open to everyone; you don't need to be a member of either the Sierra Club or the HPS to join us! However, to participate in an outing, you will be required to sign a participation agreement. Additionally, you will be required to complete, print out, and submit to the leader of the outing a Medical Form listing allergies, medications, and general medical information at the trailhead prior to the start of the outing. Your medical form will be kept confidential and will be returned to you at the conclusion of the outing. And if you're feeling unwell, please do not participate on the outing.

You can preview the participation agreement here:

<https://www.sierraclub.org/sites/www.sierraclub.org/files/sce/leadership-training-committee-and-outings-management-/Angeles-Outings-Sign-In-Waiver-Oct2019.pdf>

And the Medical Form here:

<https://www.sierraclub.org/sites/www.sierraclub.org/files/sce/leadership-training-committee-and-outings-management-/Local%20Outings%20Medical%20Form.pdf>

Unless otherwise indicated, contact the leader of the outing(s) you'd like to join for trip status and details. Leader contact information is included in this edition of The Lookout.

We hope you'll join us out on the trails soon!!

Wed May 24 Hundred Peaks

O: McPherson Peak 5749' - Join us for a loop hike on trail to this peak in Santa Barbara County near Cuyama. Starting from Aliso campground we will follow up scenic Aliso Canyon on the Hog Pen trail (HPS route 2). Some road walking will get us to the peak then we will return on the McPherson Peak Trail (route 1) along a series of ridges back to the vehicles. Option to continue on to Peak Mountain, adding 6 miles rt and 600' gain, if time, temperature, and interest permit. Total 9 miles, 3000 feet gain for McPherson. Bring lunch, snacks, beverage, hiking footwear, layers, sunblock and hat. This back country outing requires the completed paper Local Outings Medical Form to be reviewed by the Leader at the trailhead prior to the hike. Contact Jim Hagar at jhagar1@gmail.com for status and details. *LEADER: JIM HAGAR, CO-LEADERS: SHARON MOORE, LIDIA BARBOSA*

Sat May 27 Hundred Peaks

I: Little San Gorgonio Pk (9133'), Wilshire Mtn (8832') - - Join us for a challenging hike to Little San Gorgonio Peak and Wilshire Mountain in the Yucaipa Ridge area. The total distance will be approximately 7 miles, and the elevation gain will be around 3,700 feet (3,300 feet on the way out, and 400 feet on way back). Bring lunch, snacks, beverage, hiking footwear, layers, hat and sunblock. This back country outing requires the completed paper Local Outing Medical Form to be reviewed by the Primary Leader at the trailhead prior to the hike. Contact the Leader for status and details. *LEADER: LIDIA BARBOSA, CO-LEADER: BILL SIMPSON*


Sat Jun 10 Hundred Peaks

O: Bertha Peak (8,201') - Come celebrate the close of spring with views of snow and water above beautiful Big Bear Lake. The route will take us through an oak-juniper-pinyon pine woodland, winding its way to the top of Cougar Crest, then up the crest to the top of Bertha Peak at 8,201 feet. The hike will consist of an approximately 7 mile out-and-back, on trail and Forest road with about 1500 feet of gain, and will take about 3-4 hours to complete. We will do it at a moderate pace. Bring 2+ liters of water, lunch, snacks, beverage, hiking footwear, layers, hat and sunblock. This is a Sierra Club Backcountry Outing, which requires everyone to submit a completed Medical Form to the Leader at the trailhead. The medical forms are treated confidentially. *LEADER: JIM HOYT (jhozt@mscomm.com), CO-LEADER: BILL SIMPSON*

Sat Jun 10 Hundred Peaks

I: Navigation - Mt. Pinos Navigation Noodle -- Navigation noodle at Mt. Pinos to satisfy the basic (I/M) or advanced (E) level navigation requirements. Practice skills or checkoff. Send email with contact info (mailing address, telephone numbers), navigation experience/training, any WTC, leader rating, rideshare to *LEADER: ROBERT MYERS, ASSISTANT: ANN PEDRESCHI SHIELDS.* (This is a backcountry outing; a medical form will be required.)

Sat Jun 17 Hundred Peaks

 **O: Strawberry Peak (6164') and Mount Lawlor (5957')** - Join us for one of the most embarrassingly named peaks in the Angeles National Forest: Mount

Lawlor (Lawler?, Loller?, Lahlur?). We will learn about the history of the peak and how it ended up named incorrectly as we climb up it. As a bonus we will also climb the highest peak in the area, Strawberry Peak, and take in the views of southern California. Starting from the Red Box Picnic Area we will cover ~7 miles and 2500 feet of gain at a moderate pace with plenty of time to enjoy the sights. This back country outing requires a completed paper Local Outing Medical Form to be reviewed by the leader at the trailhead. *LEADER: ROBERT KUNC, CO-LEADER: BILL SIMPSON*

Sat Jul 1 Hundred Peaks

I: Hike to Shay Mountain (6714), Little Shay Mountain (6635), Ingham Peak (6355), Hawes Peak (6751) - Hike these four peaks NW of Big Bear Lake. This area was once home to the Kaiwem Serrano Indians. Members of the Serrano tribe are part of the Takic subset of the large Uto-Aztecan group of Native Americans. They were a branch of people who arrived in Southern California around 2,500 years ago. The hike will be mostly on trail and use trail, and expect some very steep and brushy sections. The entire hike should be about 12 miles round trip with around 3500 feet of elevation gain. High-clearance vehicles required. Bring water, lunch, lug soles, layers, sunscreen and hat. This back country outing requires the completed paper Local Outings Medical Form to be reviewed by the Leader at the trailhead prior to the hike. Contact the leader for meeting information. *LEADER: LIDIA BARBOSA (lidia.barbosa3@gmail.com), CO-LEADERS: BILL SIMPSON, SHARON MOORE, LARRY POND*

Sat Sep 23 Hundred Peaks

I: Navigation - Mt. Pinos Navigation Noodle -- Navigation noodle at Mt. Pinos to satisfy the basic (I/M) or advanced (E) level navigation requirements. Practice skills or checkoff. Send email with contact info (mailing address, telephone numbers), navigation experience/training, any WTC, leader rating, rideshare to *LEADER: ROBERT MYERS, ASSISTANT: ANN PEDRESCHI SHIELDS*. (This is a backcountry outing; a medical form will be required.)

Sat Dec 2 Hundred Peaks

I: Navigation - Mission Creek Preserve Navigation Noodle -- Navigation noodle at Mission Creek Preserve to satisfy the basic (I/M) level navigation requirements. Saturday for practice, skills refresher, altimeter, homework. Sunday checkoff or additional practice. Medical form required from all participants. Send email with contact info (mailing address, telephone numbers), navigation experience/training, any WTC, leader rating, rideshare to *LEADER: ROBERT MYERS, ASSISTANT: ANN PEDRESCHI SHIELDS*. (This is a backcountry outing; a medical form will be required.)

-oOo-

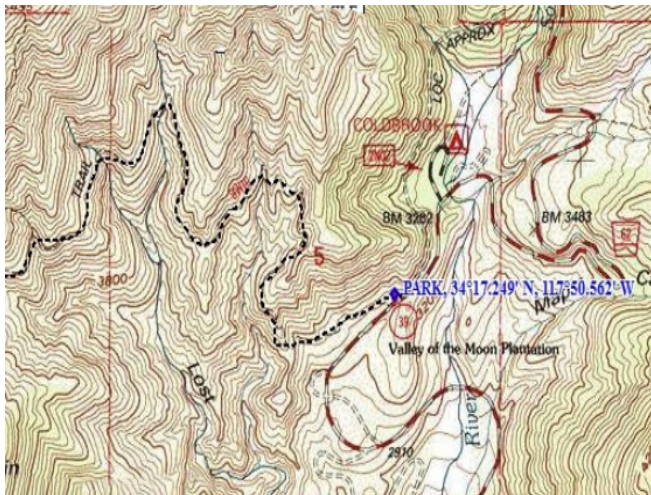
HPS, WTC Introductory Hikes

April 8th Hike To Smith Mountain

Sunny Yi Jason Park Leaders



Introduction Hundred Peaks to WTC Students began with the Smith Mountain hike of 7 miles and 1,800 feet of gain. Smith Mountain stands 5,111 feet in the San Gabriel Mountains. It passed through several different types of terrain including forests of pine and oak trees with outstanding views off the surrounding mountains.



Liebre Mountain Intro
Hike By Ron Campbell
April 15, 2023

Bright sunshine and mild temperatures greeted a large group on our Intro Hike to Liebre Mountain on April 15.

The only thing missing was the wildflower display that I had mentioned in the write up.



We were at least two weeks too early for the display of flowers. We consoled ourselves with epic views of the bloom miles away in the Antelope Valley, painted in hues of orange and gold.

In addition to veteran HPS'ers, the hike attracted four or five recent WTC students. We hope they'll join us on future trips.

If you've never hiked Liebre via the Pacific Crest Trail, the hardest part is getting there. Old Ridge Route has a "Road Closed" sign at the turn-off from Highway 138, and although it's drivable, the road is poorly maintained. The 50-yard dirt road to the trailhead from Pine Canyon Road is deeply rutted; passenger cars can still drive it, but probably not much longer.

But the trail, ah, the trail: After a fairly short traverse through brush, one is in forest interspersed with a meadow or two. This is one of the prettiest hikes on the List.

We made it to the top in a couple of hours, then spent a few minutes stumbling around trying to identify the "true" summit until someone helpfully found a wooden signpost settling all doubts.

We signed in, ate a leisurely meal, admired the view and returned to the cars.

Thanks to Sharon Moore for the great co-lead and for identifying the few wildflowers that we spotted on the way down.

Participants were Carey Beck, Anjna Bhagvanjee, Chiara Bonsignori, Mark Butski, Ingrid Chung, Jenny Gardelle, Eric Gardelle, Amy Huang, Angela Lee, Tom McDonnell, Maricel Perez, Teresa Spohr, Alona Sudorzhenko, Kwee Thio, and Kallya Warren.

Strawberry Peak & Mount Lawlor

Peter and Ignacia Doggett

April 23, 2023



Strawberry Peak is one of the most popular hikes in the Angeles National Forest, beginning with Strawberry Peak start hiking at Red Box. Hiked on to Mt. Lawlor. Total hike was 6.5 miles.



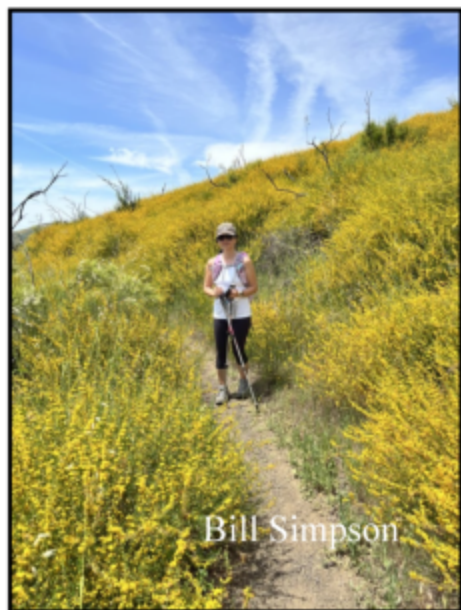
HPS Introductory Hikes on The Backbone Trail

By Bill Simpson



An HPS introductory hike for WTC grads to ... Backbone Trail??? Yes, that's what happened! The continuing closure of the Angeles Crest Highway led to the cancellation of our hike to Mount Hawkins.

The Backbone Trail -- open and nearby -- was a crowd pleasing replacement.



Leader Yoko Ishiguro among the many acres of Deerweed.
Photo Bill Simpson



A group of 17 hikers left from a Backbone Trail parking lot on Encinal Canyon Road, hiked the Backbone Trail to Kanan Dume Road and returned. We all did 10 total miles and 2,100 feet of elevation gain in the process. The day got a little warm, but the weather was otherwise perfect. And, oh, the wildflowers (see photos). There were 7 HPS leaders present to visit with the ten participants during the hike, dishing HPS information like crazy. A great day was had by all. (Saturday, April 29)

San Ysidro Mountain by Steve Russell

I am not accustomed to hiking up 6,000-foot peaks in mid-May. It is way too hot for me. That said, when Peter and Ignacia Doggett posted a trip to San Ysidro Mountain, I jumped on it right away. I have been looking at that peak for years. It was high on my list of peaks to do with the club since it required knowledge on how to skirt private property.



From left to right are Christine, Peter Doggett, Ignacia Doggett and Desiree.



Five packed into the Doggett's Toyota Landcruiser at the Mobile station on the corner of Highway 79 and Butterfield Stage Road in Temecula for the drive to the northwest side of Anza Borrego State Park. It looked like you could get most, if not all, of the way there in a passenger

car. The key is avoiding private property. Apparently, the locals keep a close eye on folks in the area and have been known to challenge hikers to ensure that they do not trespass.



We used route 2. The hike was short but steep, at least after the initial section of dirt road walking. It started with a 0.7-mile hike to reach a steep gully which is ascended to a dirt road (currently dissolving into the mountainside due to lack of use). We ascended to slightly above a saddle where much route finding was needed to find a path through the brush and rocks on the west side of the Thimble, a rocky point on a spur ridge coming down from the peak. Peter did an excellent job navigating. Every time it looked like we were heading for a deadend, Peter found a path through.

Once we reached the flat top it was a short trip to the summit block. I climbed the summit block to retrieve the register. After a short rest, and some food, we picked our way back down the mountain, doing a pretty good job of re-tracing our original path. By Steve Russell, 5-17-23

Sierra Club Angeles Chapter Annual Banquet May 21, 2023



Mark S. Allen



Angles Chapter Director Morgan
GGoodwin , welcomes guests.



David Eisnber 2023 Chapter Banquet Award
Winner pictured with Dyana Pena,
Angeles Chapter Chair



White Cane Award Winners. Members off The Hearts For Sight
Foundation with Will McWhinney, Sierra Club Central Group
Leader.

(V60 N3 Page 16)



Coby King, Excom Board Member
and Former Hundred Peaks Chair.

From Bob Cates, Historian



Les Stockton, Inspiration Summit, May 26, 1972.
(Les Stockton and Abby Stockton) Slide is
labeled Emblem 100, HPS Desert Peak.

Photographer Les Stockton

Donor Laura StocktonOriginal Original 35 mm
slide scanned by Charlie Knapke and returned to
donor.Credit Les Stockton Collection, Sierra
Club-Angelos Chapter Archives Image ID (file
name) Stockton 004



Thirty-seven years ago on this date. John Backus (left) and FFrank GGoodykoontzz atop
Sugar Pine Mountain.



- Jim Hagar – Chair
- Sharon Moore - Vice Chair
- Mark S. Allen - Secretary, Lookout Editor, Merchandise
- George Christiansen - Access and Mountain Records
- Steve Russell - Membership Chair
- Larry Pond - Member At Large
- Sunny Yi, Programs Chair
- Laura Newman - Treasurer
- Meeting Call to order 6:03pm
- Chairs Report, by Jim Hagar: Hundred Peaks Section Membership discussion focus of meeting to improve Membership Data List. Bring accountability up to date. Make lists more inclusive to gather and strengthen membership.
- Proposed MCOMM support of outings-friendly Sierra Club National Leaders M/S/Approved
- Proposed suspension of Heald Peak, M/S/Approved
- Membership Report, by Steve Russel. Discussed progress determining HPS Emblems List and further developing membership plan toward releasing Lookout Newsletter.
- Discussion and Approval of 1-11-22 MCOMM Minutes by Mark S. Allen. M/S/Approved
- Discussion of Treasurer's 2/28/2022 Report, by Laura Newman. M/S/Approved
- Mountain Records, By George Christiansen:

**MOUNTAIN RECORDS REPORT MARCH 8, 2022
GEORGE CHRISTIANSEN, LARRY POND**

JIM FIRE

The Jim Fire this past week in the area of the Holy Jim Trail and Santiago Peak. As of March 5, the fire was 60% contained, and burning east of Santiago Peak. The area remains at 553 acres. Potential long-term closure of access to Santiago Peak is yet to be determined.

CURRENT FOREST CLOSURES

Two current Forest Closure Orders are scheduled to expire by April 1. The El Dorado Closure on March 31, and the Bobcat Closure on April 1. Many times, Forest Closures are extended, or modified in size after the original expiration date, so all will be advised of the status after those dates.

CURRENT PEAK SUSPENSIONS

At the present time, thirty-two peaks remain suspended. Eight in the El Dorado Closure Area, twenty in the Bobcat Closure Area, and three in the Apple Closure (closure currently in effect through September 22, 2022). Hines Peak is also suspended, but not due to a forest closure or fire activity (Suspended by HPS due to safety concerns).

- Angeles Chapter Awards Banquet, May 1st, Griffith Park
- 2022 Spring Fling, May 28-29
- Waterman Rendezvous, June 25th
- Meeting Adjourned: 7:15pm

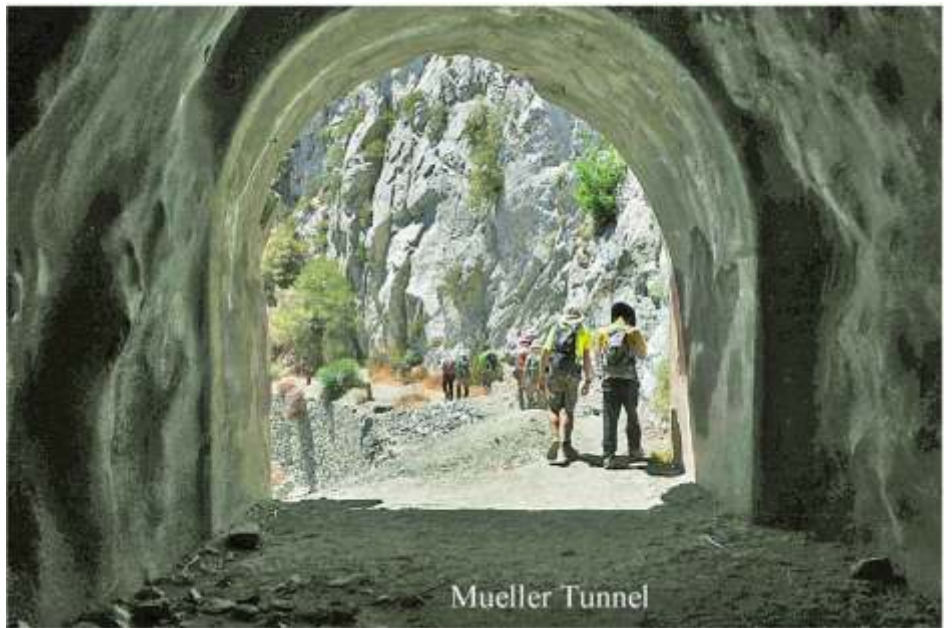
Hiking Photography

By Jin Oak Chung

> From V54 N5 Sept - Oct 2017 <



Sedum Ground Cover, Golden Garden



Mueller Tunnel



Mari Sakai

