



Volume XXXIII, Number 6:
November-December, 1995

HUNDRED PEAKS LOOKOUT



Programs Return to Hundred Peaks Section Monthly Meetings

Beginning with the October monthly meeting, there will be programs at Hundred Peaks Section meetings. The meetings will be held at the Griffith Park Ranger Station Auditorium and begin at 7:30 pm., except for the special HPS/DPS/SPS meeting on January 10 which will be held at the LA DWP. As usual the programs follow announcements, trip reports, and Section business. Refreshments are provided during the break between the business portion of the meetings and the program. Here is the schedule of programs for the period October 1995 through January 1996:

October 12 *The Wildlife of Southeastern Africa.* HPS Emblem holder and world traveler Jan Brahms presents program based on her recent trip to Africa. Refreshments are to be based on the cuisine of Africa. See picture of Jan and "friend" right. ▶

November 9 *Mayan Ruins in Mexico.* Randy Bernard presents a slide show on pyramid bagging in the Yucatan Peninsula. See picture below right. ▶

December 14 *50th Birthday Celebration.* Joe Young celebrates his 50th birthday and 25th year with the Sierra Club. His slides will highlight peak bagging outings, backpacks, trips abroad, and more.

January 10 *Wednesday Special joint meeting* with Sierra Peaks Section, Desert Peaks Section, and the Hundred Peaks Section, a meeting to celebrate all the climbing sections. The evening will be a great time to meet old and make new climbing friends. General meeting followed by a multi-media slide presentation "San Bernardino Mountains" by Jim and Sylvia Gallagher. The meeting will be held at the Los Angeles Department of Water and Power headquarters, Los Angeles Room, 111 N. Hope Street, Los Angeles. Free parking on site.

HPS Holds Elections

The Hundred Peaks Section is conducting its annual election. Attached to your **Lookout** should be enough ballots for all members of the HPS residing in your household. If there are insufficient ballots for your household, please contact Carleton Shay. When you return your ballot, please seal it neatly with tape. **DO NOT USE STAPLES!**

See inside this issue of the **Lookout** for statements by the eight candidates for the Management Committee and an explanation of the proposed By-Law change to add the Bill T. Russell New Leader Award.



Congratulations

By *Charlie Knapke, Membership Chair*

100 Peaks Emblem

929	Ray Soucy	July 5, 1995	Dawson Peak
-----	-----------	--------------	-------------

200 Peaks Bar

324	Betty Sterrett	June 24, 1995	Black Mtn #5
325	Janet Bartel	July 3, 1995	Suicide Rock
326	Erv Bartel	July 3, 1995	Suicide Peak
327	Harriett Edwards	July 30, 1995	Mount Harvard
328	Jeffrey W. Koepke	July 24, 1995	San Gabriel Peak

First List Completion

187	Julie Rush	June 24, 1995	South Hawkins
188	Eric Sieke	July 2, 1995	Mount Gleason

Membership Summary as of August 31, 1995	August 1995	August 1994	August 1993
Active Membership	370	434	460
Inactive Membership	308	250	223
Honorary Membership	3	3	3
Lookout Subscribers Only	69	59	44

New Members

Thomas Hill	Lynda Hill
Elixabeth DiGirolamo	Joan Richter
Thomas Ludwig	Christey Schreiber
Ronald L. May	Eric Fitzgerald
Robert F. Meade	Betsy Horgan

New Subscribers

Chuck Satow	Anita Punak
Peter Bryant	Gary McNulty
Eric Fitzgerald	Robyn Battershill
Linda Levine	Anne V. Goldsmith
Dianne Edwards	Steve Nygaard
Audrey Jasiunas	Charlie Herbst
Peter R. Height	

IS THIS YOUR LAST

LOOKOUT?

The following people have not renewed their subscription to the **Lookout** as of September 19, 1995. This is the last issue of the **Lookout** that will be mailed to these members unless they renew their subscription.

Mark Adrian	Barbara Magnuson
Rob Auten	Roy Magnuson
Joseph Baker	Gene Mauk
Toni Conrad	George E. Neuner
Mark Day	David Patching
Reena Deitsch	Lawrence Pond
Daryn Dodge	Manny Salinas
John Dykstra	Bill Sampson
Harry Freimanis	Thomas J. Sexton
John Gibba	Martha Spano

Statements of the Candidates for HPS Management Committee

Peter "Hill" Doggett

In 1989 I joined the Sierra Club to meet girls and I was introduced to The LIST. Almost every weekend during the past six years I have joined HPS outings and have summited over 1,400 HPS peaks and finished the LIST.

I frequently climb as many HPS peaks as I can and return: aged, belligerent, bitten by insects, blistered, bloody, constipated, dehydrated, exhausted, filthy, hungry, perched, scratched, stinky, sun-baked, sweaty, tired & zapped by lightning. Isn't this fun!

May this is masochistic, but I want others to experience the rewards of climbing all of the HPS LIST.

Please vote.

Ruth Lee Dobos

I've been actively involved with the HPS over ten years. Served in the Management as Vice Chair, Chair, Past Chair, as Conservation Chair three years and in many other appointed positions.

A two time List finisher, with the Pathfinder Emblem, and the 200 Leads Emblem. An "I" rated leader, I'm third and fourth in leading scheduled hikes since record keeping began. Received the 1991 Angeles Chapter Outings Service Award.

In these troubled times in the Sierra Club, I want to continue serving the HPS.

With your support, I will keep the HPS as great as it is.

Southern Courtney

It is my conviction that Outings and Conservation Activities of the Sierra Club should support and enhance each other. Therefore I'm now serving as Treasurer of the Chapter Conservation Committee and as HPS representative on the Chapter Council. I regularly participate in and lead Club outings. Helping to protect our environment, in a small way, is satisfying. Hiking, leading hikes, and peak bagging is great fun and also satisfying.

Jim Fleming

I have been a Sierra Club and HPS member since 1974, and began leading outings for the HPS and other groups the following year. I have had various experiences serving the HPS Management Committee: Programs Chair in 1983; Section Chair in 1984; Past Chair in 1985; Programs Chair in 1993; and Secretary this past year. I look forward to serving the Section again in 1996.

David F Eisenberg

I have had the privilege of serving the Hundred Peaks Section for the past six years. During that time I have been **Lookout** Editor, Vice Chair, Outings Chair, Chair, and Past Chair for our Section. I have also served on the Election Awards, and Mountain Records Committees. During this' time

I have also managed to lead the List as well as finish the List three times.

I would be happy to continue to be a part of the Management Committee again. (Especially since my knee problems continue to restrict my outings leadership to infrequent easy hikes!)

Matt McBride

I have been a member of the Sierra Club for 11 years, a member of HPS for 8 years and have done 240 peaks on the List. My activities include leading evening hikes in the Santa Monica mountains which involve introducing newcomers to hiking and to Sierra Club activities; leading hikes along the BackBone trail for the Santa Monica Mountains Task Force; and trail maintenance. I have also been a leader in Junior Achievement through my company. My background is as a software developer. If elected to the Management committee, I would like to be involved in helping maintain HPS computer files, trail maintenance, and other necessary functions to help maintain and improve our club.

Frank Goodykoontz

I have been a member of the Sierra Club since about 1970; joined the HPS in 1974; and finished the List in 1977. An "M" rated leader, I've led or assisted on hikes since about 1972 with the HPS, Mt Baldy Group and the San Gorgonio Chapter. I also was field instructor for BMTC for several years. I am mainly

outings oriented but did serve as Programs Chair on the Committee some years ago. If re-elected I will add experience and plan to help out wherever I can to improve the Club.

Louis Quirarte

I joined the HPS as an O-rated leader in 1986. Founding the new Central Group and Chapter level commitments have been absorbing, but I'm ready now to devote more time to peakbagging which was always first in my heart. I've been HPS Editor, Secretary, and am now Peak Naming Chair. It was my joy and an honor to receive your Special Award for my history of the origin of our HPS peak names. I'd be equally proud of you'd allow me to continue to serve the best Section in the Club in any capacity.

Proposed By-Law Change:

The Bill T. Russell New Leader Award

The Bill T. Russell New Leader Award is to be given in recognition of an outstanding new leader (a leader who has completed LTC in the last five years) who has demonstrated excellent leadership techniques by leading innovative new routes, exploring historic trails, peaks, or developing important new traditions; therefore by virtue of the frequency and variety of the trips she/he has led or co-led shows great promise as a regular and frequent future leader for the HPS. This is not an annual award but is given only as a new leader qualifies by virtue of his/her auspicious record.

The following "historical language" is to be incorporated as an amendment to the By-Laws:

This award is named the Bill T. Russell New Leader Award in honor of Bill T. Russell, who has mentored countless new leaders, has led some of the most exciting and innovative routes, and has been instrumental in developing multiple routes such as the annual Iron Mountain climb, the Galena to Birch extravaganza, and his exploration of the ridges, truly giving meaning to the term "Pathfinder."

Don't forget: The Hundred Peaks Section Annual Awards Banquet is set for January 27, 1996. Les Freres Taix Restaurant. Watch for specifics in the upcoming Schedule of Activities.



Harriet Edwards (center, front) with fellow hikers on the summit of Little San Gorgonio Peak, August 20, 1985. Photograph taken by leader Theresia Glover.

From the Chair

By Carleton Shay

We were saddened to hear at the last Management Committee meeting of the passing of Erv Bartel the previous evening in Griffith Park. Erv was an ardent HPSer who had climbed 218 peaks, having navigated to and climbed Folly Pk with Janet just a few days before his death. He literally died "with his boots on" while hiking. Our thoughts and prayers go out to Janet and her family.

The Angeles Chapter Executive Committee reached a decision on the \$9 Schedule fee at its meeting August 3. Their action states: "A review of the options presented suggested many medium and long-term solutions but few that would provide short-term financial assistance. Therefore, with reluctance, the Executive Committee reinstitutes a mandatory \$9 annual subscription fee for the Schedule of Activities. When the financial situation of the Chapter improves and revenues consistently exceed expenses, the Executive Committee will review the necessity of the subscription fee. Any income generated will benefit all Chapter activities, not just the Schedule of Activities. The fee will be waived to all Chapter members who are life members of the Sierra Club and request that the fee be waived. Also new members of the Angeles Chapter will receive their first issue free."

Be sure to vote in the annual HPS election! Your vote is important. In addition to electing six Management

Committee members, there is one issue on the ballot: a proposal for a new award: the Bill T. Russell New Leader Award. If approved, this award would be given to a promising new leader who has completed LTC within the last five years and has shown exceptional promise as a regular and continuing leader for the Section on the basis of frequency and variety of leading. It is not intended as an annual award, being given only when an individual satisfies the criteria. It is named for "Bill T.", one of the legendary leaders in the HPS (and SPS and DPS) who serves as an inspiration to all leaders for his teaching and nurturing leadership skills, as well as for his exploits.

The attendance at the Business meeting in September was excellent, in contrast to more recent months. We hope that more people will attend forthcoming meetings; there is again a full schedule of programs to make it worth your effort.

Last but not least, I hope to see you at **Oktoberfest**, our big blowout October 14-15. There will be hikes both Saturday and Sunday, and lots of celebrating. Assuming that this issue of the *Lookout* reaches you before then, it's never too late to attend!

Editor's note: The following exchange of correspondence between David Eisenberg and the National Sierra Club headquarters seems to indicate that there is a level of responsiveness to member opinions. The letters are reprinted here in their entirety.

August 18, 1995

Carl Pope, Exec Dir.

Sierra Club

My membership is coming up for renewal in September. To date, you have sent me three letters. I think you should know why I am so reluctant to renew my membership.

I have been an active Sierra Club leader for 10 years. During that time, I have lead trips to over 500 peaks (some repeats). I have also been Chair, Vice Chair, Outings Chair, Newsletter Editor, and Past Chair for the Hundred Peaks Section. During that time I have personally recruited over 50 members. In addition, I instituted a brochure program (with Sierra Club membership forms) that has now been copied by several other sections.

During this time, I have received numerous communications from your office regarding policy. Yet in all that time, you never asked my opinion on what that policy should be!

Recently you severely cut funds to local chapters. The Angeles Chapter responded by deciding to charge for the Schedule of Activities. (Also without consulting membership)

I have decided to renew for one year only. During that year, I will continue to lead trips. To renew again, I will expect you to consider the following suggestions.

1. Give the option of NOT subscribing to the Sierra Magazine with the funds to go to the local chapter.

2. Conduct membership opinion polls and use the results to help make policy.

3. Restore funding to local chapters.

4. Consider cause specific funding. This would quickly let you know which policies are supported and which are tolerated.

If you want to destroy an organization, have the leaders ignore the opinions of the membership.

David F Eisenberg

September 11, 1995

David F Eisenberg

Thank you for renewing your Sierra Club membership and for expressing your concerns about policy and use of funds.

I am happy to report that we are working on some of the suggestions you have made. In an effort to better allocate resources and to do our best to meet the varying needs of our supporters, the Sierra Club is testing a system of tiered benefits. We are also excited about a membership poll which we will conduct in 1996 to gather opinions and to act on members' suggestions.

The last few years have been challenging to us due to the economical climate. We are becoming financially stronger as the economy recovers and people are more willing to donate to nonprofit organizations again. As a result of this, we will be able to support our Chapters better. Chapters still receive a percentage of dues from the National office and we have support staff at National to help Chapters and Groups with

fund raising and membership drives.

The issues you have brought up are important and I am forwarding your letter to our Membership & Development, Deborah Dinkelacker, for her information.

Once again, thank you for letting us know how we can serve you better. We make every effort to respond to the needs of our members and donors. Thank you also for your personal commitment to our cause. Your continuing support contributes immeasurably to the success of our efforts.

Jennet Lee
Information Center

Letter to Editor

I am writing to respond to a letter written by Annie Kramer which appeared in the HPS **Lookout** and will no doubt appear in other section publications. I was appalled at the suggestion made by Annie about firing Francesca Walsh Davis, our Angeles Chapter office manager. I called Annie and asked her if she had seen any job descriptions for any of the chapter positions or if she knew the salaries of any chapter employees (Francesca is not the highest paid staff person, and is the only woman on the Angeles Chapter staff). The answer was "no" to each question. I thought, how can a person running for the Executive Committee make such a blanket statement about firing any staff person without knowing the facts?

When long-time office manager Ellen Grief left the Angeles Chapter, Howard Strauss, Vieve Weldon, Claudia Elliot and I, then chapter personnel chair, interviewed hundreds of candidates for the position of Office Manager for the Angeles Chapter. Francesca was undoubtedly the most qualified candidate for the position, and came to the chapter with very high professional recommendations, an exceptional background in business management and excellent inter-personal skills. She graduated with honors from UCLA, with a degree in Political Science. Prior to coming to the Angeles Chapter, Francesca worked as Operations Officer for the Santa Monica branch of Glendale Federal Bank where she had been for 8 years. She managed the branch office, supervised tellers and new accounts officers, approved home loans, was responsible for general accounting, developing new business which included bringing in new accounts.

As office manager for the chapter, Francesca's current responsibilities include bookkeeping for the chapter, accounting database entry, payment of all monthly chapter bills, bank reconciliation and deposits, and maintenance of all postage accounts for the chapter. She is the primary support for the volunteer chapter treasurer (the most demanding job on the ExCom). She is currently supervised by the chapter chair and is the Angeles Chapter liaison for the Southern California Nevada field

office, the Centennial Campaign, and is liaison to the building management. She

communicates to the ExCom the overall needs and concerns of the staff, maintains all office equipment including computers, copier, fax, phones; orders office supplies and equipment, maintains the chapter library, recruits, trains and supervises all office and accounting volunteers. There are approximately 7 office volunteers (mostly retirees who have free time to volunteer during business hours). The volunteers are oriented to all groups, sections, committees and activities of the chapter. They also answer phones and help with shipping and receiving. Two accounting volunteers, also trained by Francesca, handle bank deposits, billing and accounts receivable. Finally, Francesca prepares all grant requests to the Sierra Club Foundation and Friends of the Angeles Chapter Foundation.

Historically, the Angeles Chapter has always had a very difficult time recruiting volunteers for the front office, during business hours, which accounts for the answering machine picking up so often when one calls the office. Since Francesca has been on board, she has worked very hard to give the chapter's front office some semblance of professionalism.

Francesca is very professional and a true asset to the Angeles Chapter office. I do not recommend cutting her position to save the

Schedule. I do recommend that the chapter aggressively consider ways to make money,

"We can cut all we want – until we have no staff, no chapter headquarters, no chapter publications – but all the cuts in the world won't keep us out of bankruptcy unless we stop relying on the ever-dwindling dole from National and start aggressively making money for this chapter." – Wynne Benti-Zdon

not rely on cutting staff and services. Perhaps, we should consider hiring more business types, since most of us are here for the conservation and outings, anyway. It doesn't take a lot of skill to be an environmentalist. Sit one of them down in front of a PC, and have them enter the chapter's accounting records, using Realworld, for the month of August and you'll see what I mean. It makes absolutely no sense to fire the one business person in the entire office. We can cut all we want – until we have no staff, no chapter headquarters, no chapter publications – but all the cuts in the world won't keep us out of bankruptcy unless we stop relying on the ever-dwindling dole from National and start aggressively making money for the chapter.

One last thing. Over the years, the Angeles Chapter ExCom has tossed away hundreds of thousands of dollars by approving funds for misguided conservation efforts. In 1989, the ExCom approved a bogus expenditure on a 10K run to "Save the Ballona Wetlands", a complete fiasco which lost approximately 50-

75 thousand dollars of the chapter's money and drummed at least two members off the ExCom and, literally, out of the county. The ExCom is constantly being approached by people and groups wanting the Sierra Club's money for their little environmental fights – but \$10,000 here and \$20,000 there adds up to a lot of free Activities Schedules for Angeles Chapter members.

Wynne Benti-Zdon
past member, Executive Committee, Angeles Chapter

Editor:

In regards to the letter by Ann Kramer published in the Sept./Oct edition of the **Lookout**.

As a new member of the Hundred Peaks Section I was delighted to receive my first edition of the **Lookout**; however, as I turned to the Letters to the Editor I could not believe what I read. Ms. Kramer's letter displayed not only ignorance of Sierra Club policies and ideals but a lack of common sense.

I was amazed that a Sierra Club member could write "...I realize that there are some 'conservation' activities going on, supposedly on my behalf, but I don't know anything about them." Ms. Kramer where have you been for the last 9 months as Congress, led by Newt Gingrich, has tried (and in some cases succeeded) to dismantle every environmental law and policy that the Sierra Club and other environmental

organization have worked towards in the past 25 years? Ms. Kramer you state that the Sierra magazine and the Southern Sierran are worthless and then say "If anyone would ever tell me about these 'conservation' activities... I might feel differently about being asked to pay for them via my Schedule subscription." WAKE UP CALL MS. KRAMER!! The Southern Sierran and the Sierra magazine are the Club's main instruments in communicating to its members about the conservation battles we are waging during this "War on the Environment."

You display a lack of common sense in your "discussion" of why "we" don't need Francesca Walsh Davis as an office manager (yes Ms. Kramer, that is her name - you can find it on page 3 of the Schedule), I offer this for you to ponder. Just because you don't know someone personally doesn't make that person or the work they do a frivolous expenditure. I don't know the firefighters at the local station but I am sure that they serve some purpose - don't you? I think you should get to know Mrs. Davis and find out exactly what she does at the Chapter Office before you write her off as being unimportant.

Lastly, you wrote that you only belong to the Sierra Club in order to get the Schedule for free; however, it costs more to be a member of the Sierra Club (\$35 for an individual) than it does to buy 3 issues of the Schedule of Activities at Sport Chalet (\$16.50 plus tax). The Sierra Club is more than just a hike

up a mountain Ms. Kramer, it is a conservation organization whose mission is to Explore, Enjoy, and Protect the wild places of the earth. You cannot have the first two without the third. Principles aside, 75 cents a month is not too much to ask if it will help us win this "War Against The Environment." I hope you will rethink your position on the \$9.00 fee and realize that it is supporting a good and necessary cause.

Anne Vizzolini Goldsmith
Chair of the Pasadena Group

Response to Ann Kramer

With a certain reluctance, let me respond to Ann Kramer's Letter to the Editor, which appeared in the HPS (Sep/Oct) and SPS (Jul/Aug) newsletters.

I know Ann very slightly, as we both serve in appointed positions on the SPS Management Committee. That I know her only slightly is a failure on my part. It is clear to me, however, that she is a reasonable, caring and sincere person. I can readily hear the anguish voiced by her and many others over the unprecedented charge for the Schedule of Activities.

It's hard for me personally, however, to identify with where she's coming from in some of her statements:

"The only reason I joined the Sierra Club was so I could get the Schedule for free instead of having to buy it at Sports Chalet. Further, as far as I can tell, the only benefit I get from my Sierra Club

membership is my free schedule.

"I suspect that the ExCom will be surprised to hear this. I consider the Sierra Magazine and the Southern Sierran to be worthless. I am not aware of anything else that the national Sierra Club or L.A. Chapter are doing for me.

"Of course, I realize that there are some 'conservation' activities going on, supposedly on my behalf, but I don't know anything about them. If anyone would ever tell me about these 'conservation' activities, or ask me how I feel about them, I might feel differently about being asked to pay for them via my Schedule subscription."

Even as someone deeply involved in outings, I didn't join the Sierra Club because I expected it to do something directly for me. (If all I wanted was the Schedule, it'd be much cheaper to buy it at Sports Chalet.) I joined this and a few other environmental organizations because I was, and am, sympathetic to their aims and I wanted to lend my support.

I'm willing to awkwardly confess, however, that I'm somewhat of a "closet" environmentalist. I don't spend much time reading Sierra magazine or the Southern Sierran. But I certainly know that they're to look if I really want to know what the Club is doing to protect our wild places. And I know that if I really want to know more, I can attend various Conservation Committee meetings. But I think I'm a little afraid, frankly, that if I know too much, I'd get sucked into becoming more

involved. I sometimes feel guilty that I'm not more pro-active in protecting the mountains and canyons in which I love to adventure.

Ann noted in her initial "outrage" that we could possibly need three paid staff – even after a ten percent reduction in their hours and the lay-off of the assistant office manager. She subsequently concluded that we do need a Director of Development (fundraiser) and a Conservation Coordinator – but that we should "fire the office manager."

If I were in her shoes, I guess I'd agree with Ann. My shoes, however, lead me in a different direction. First, the ExCom clearly needs to do a better job of publicizing the necessity and value of these positions. It may be widely mis-perceived that we have too much staff. (Warning: it may actually be necessary to read the Southern Sierran in order to learn what they do.) Second, I'm willing to accept the harsh reality that we may simply not be able to afford the present staff. Balancing the budget is not optional. (Let me comment personally that I believe the Office Manager position is the least dispensable.)

In concluding her letter, Ann made a comment about the "carefully--designed" telephone poll conducted last December to assess the feasibility of charging for the Schedule. "I am sure this poll was very carefully designed." Some readers will probably draw the implication that the

poll was less than honest. I don't believe Ann meant any personal offense here. I see it rather as an attempt at dry humor (of which I am often accused). I know for certain that the people who conducted this poll did so as objectively and honestly as possible.

Let's keep in mind that a large majority of the 45–50,000 dues paying Angeles Chapter members rarely, if ever, go on our outings. (Perhaps this makes them "closet" outings people.) In retrospect, it might have been more useful to have focused the poll more narrowly on those who are outings-involved.

In any event, although I initially strongly supported the unfortunate, but seemingly necessary, imposition of the

"...I earnestly urge all of us to subscribe [to the Schedule.] For all that they have done, for all that is yet undone, the Club and Chapter deserve our support." –

Bill Oliver, Member of ExCom

\$9/yr charge for the Schedule, I now have strong reservations that this effort could ultimately be counter-productive. I support a recommendation that the Schedule be sent free to all who request it – and that such persons be asked to donate \$9/yr to help support both the world-class outings and critical environmental efforts of the Chapter. In the meantime, I earnestly urge all of us to subscribe. For all that they have done, for all that is yet undone, the Club and Chapter deserve our support.

One last point: Although it

doesn't really come out in Ann's letter, I consistently hear an undercurrent in complaints about the Schedule charge. Namely, that the Chapter's environmentalists don't care about the Schedule and are willing to screw the outings program in an ill-fated attempt to raise funds. I guess it is easy to get this impression. This impression is wrong. Eight of the nine ExCom members are rated outings leaders. In addition to outings listings, the Schedule is also a valuable info resource for our conservation programs and meetings.

The Sierra Club, at least in California, is almost unique in recognizing and valuing both aspects of its historic dual nature – **outings and conservation**. The purpose of the Club, although now greatly expanded from the mountains of California, is still vibrant – to explore, enjoy and protect the Earth. Surely these dual aspects are not somehow at odds with each other.

Although many of us at different times are more involved with one aspect than the other, we all benefit from this inherently natural and reinforcing association. Each ultimately is a major source of recruits for the other. Let us not, then, adopt an "us" vs. "them" stance, which can only diminish all our efforts. Them and us are we, and we are all enlightened and enlarged by the synergism of our outings and conservation programs.

Thanks for hearing me.
Bill Oliver, Member of ExCom

Reinstatement of the \$9 Annual Charge for the Schedule of Activities

By John Cheslick

Member of the Angeles Chapter Executive Committee

Please copy and fill out the form below and send to the address listed if you would like to continue to receive your Schedule of Activities. The Schedule will only be sent to Sierra Club members who have already sent in their \$9 subscription fee, life members who request the Schedule or to new Sierra Club members who receive their first issue of the Schedule for free (all subscriptions will start with the November 1995 -February 1996 issue.)

Schedule of Activities Subscription Form	
Member Number _____	Send to:
Name _____	Angeles Chapter, Sierra Club
Address _____	3345 Wilshire Blvd
City/State/Zip _____	Los Angeles, CA 90010 - 1816
Enclosed is a check for \$ _____ payable to "Sierra Club - Angeles Chapter"	

Why this decision was made

The Angeles Chapter is experiencing a reduction in revenue and rising expenses. In order to achieve a balanced budget, the Executive Committee (ExComm) took many actions over the past 9 months to reduce expenses and increase revenues. These actions include reducing the staff from 4 full-time positions to 3 positions at only 90% of pay and hours. In addition, the number of issues of the Southern Sierran was reduced from 11 issues to 8.

ExComm also wanted to start charging for the Schedule of Activities to raise revenue. After getting numerous letters and negative feedback from some sections and groups the ExComm asked for help. A group of volunteers formed the Entity Fundraising Advisory Committee to search for additional means to raise revenue. This committee submitted their report to the Chapter Council and the ExComm in late July, early August. The committee suggested many medium and long-term solutions but few that would provide short-term assistance. Therefore, with reluctance, the ExComm voted to reinstate the subscription fee.

Some Personal Notes

I voted for the subscription and I wish it wasn't necessary. However, I believe it is imperative to have a balanced budget and maintain the strength of the Angeles Chapter. This way the Chapter will have the resources to maintain and improve the local environment. Some have said this is a charge against outings and is to support conservation activities. I believe it is a charge to support *both outings and conservation activities*. Without conservation activities there might not be any place where one would want to do outings or be able to see wildlife in their native habitat. Without outings, conservationists would not be able to understand why the land and the environment are worth saving.

So please, whether you believe this subscription charge is fair or not, please subscribe today to support the Angeles Chapter's local outings and conservation activities. Your check needs to come in before supplies of the November-February Schedules run out.

HPSer Erv Bartel Dies in Griffith Park

On Wednesday, September 13 around 7:30 pm hikers found a man lying face down on a trail known as the Pipe Trail. Word was sent to Frank Dobos and Theresia Glover who were leading a hike nearby on the Eckert Trail. Frank and others rushed to the scene and recognized the man as Erv Bartel. Frank and Don Lum applied CPR. Theresia was dispatched to alert the Park Rangers. Erv was not breathing but those applying aid believed they detected a faint pulse. Frank and Don kept on applying CPR for about 15-20 minutes, but there were no vital signs. One hiker notified the rangers with his cellular phone, and the rangers arrived at about 8:00. They took over and applied oxygen mask and chest pressure while Erv was placed into a steel basket and carried to an ambulance on the dirt road. Every 100 feet or so they group stopped to apply CPR.

At the ambulance he was placed on a gurney and continued to receive CPR from the paramedics, an injection, and electric shock while his heart was monitored by oscilloscope. There was no sign of heart beat. The ambulance rolled away around 8:25. Erv was pronounced dead on arrival at a nearby hospital.

Frank Dobos

Erv.....

I will always remember,
Griffith Park,
That night,
You,
Your light blue bandanna,
Hands in pockets,
A quiet man patiently waiting
for the hikes to begin.

I will never forget,
Days at Foster Lodge,
And Walker's Pass,
Oatmeal for Janet,
A little white car driving
through snow,
A small brown tent,
Your 100th on Cuyapaipa,
Dinner with fellow Australians
at your house.

I will always remember,
Your smiling face,
Caring heart,
Your jokes,
Your stories of family,
And navigational feats,
Your sensitivity to others.

I know that for a while,
I will continue to look for you
On the summit of yet another
peak.

Theresia Glover

Who was Erv Bartel?

Personal: His kind, encouraging relationship with his wife, Jan, made a marriage that was an inspiration to us all.

Fellow Hiker: His enthusiasm was contagious enough to channel the mood of an entire group.

From a Leader's Perspective:
His unwavering outspoken support and encouragement of the leaders were a big help on a long tiring hike. His constant acts of kindness made everybody's day.

If you were here, Erv, I would thank you for all of the above and for the many kindnesses you showed to me - particularly the unexpected bowl of hot oatmeal on the morning of a cold rushed carcamp, and for removing my pack and lifting me off the ground when I broke my shoulder. You were a dear friend and I will miss you.

Diane Dunbar

Erv Bartel had become a good friend in a relatively short time. The first time I met Erv and Janet was only about three years ago when they were on a hike on which I happened to be one of the leaders. Before we were very far into the hike I felt that I had known Erv for some time as a special friend. Very soon, Erv got my attention because he was always doing something for me and other people on the hike. Probably the best thing for a leader is just to have someone like Erv with a friendly, helpful attitude and support on their trip with that wonderful smile. This is what makes it all worth while for me to keep leading by having wonderful people like Erv and Janet Bartel on their trip.

Frank Goodykoontz

In Memory of Robert Gordon Jones

By Diana Lejins (OCSS Chair)

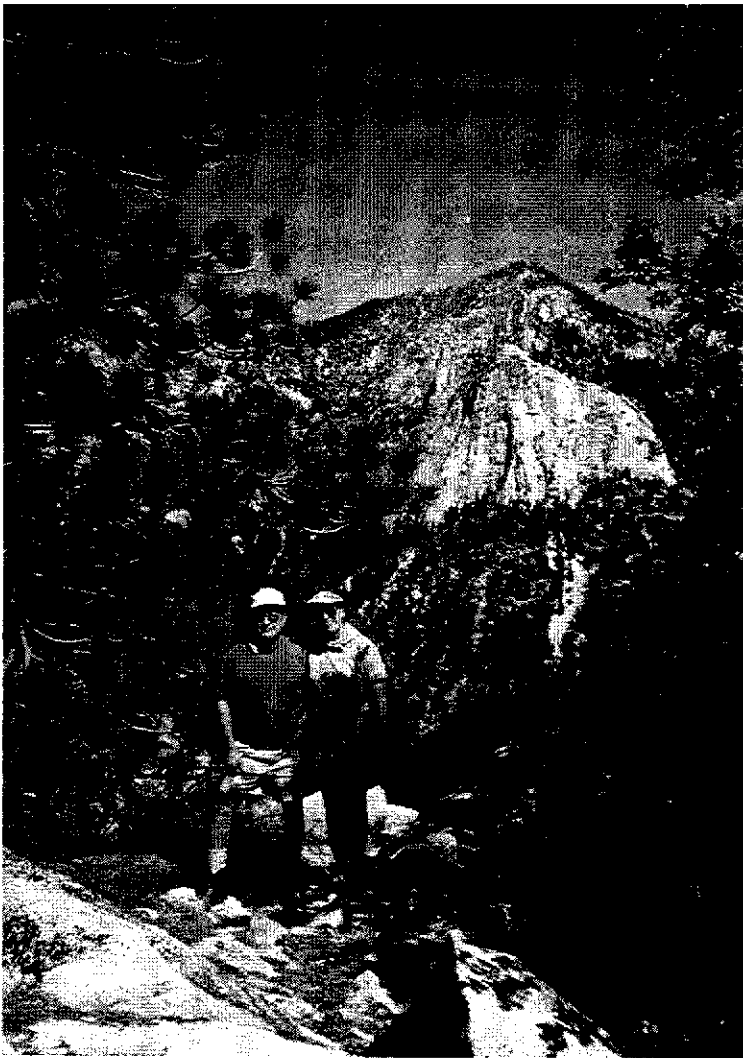
Bob Jones was an avid conservationist and dedicated supporter of the Sierra Club. He lost his battle with cancer on Sunday, March 19, 1995,

Bon had been a member of the Sierra Club since 1967, a chair (1985) and Vice Chair (1986) of the Orange County Sierra Singles, and Membership Chair for the Angeles Chapter. He was a Sierra and X-country ski leader and led numerous trips through the years. He was also a member of National Ski Patrol for ten years at Snow Valley.

He was born in Maine in 1926 and lived in Long Beach for over 60 years. Bob was a well-respected attorney who retired five years ago to travel the world. His pro-bono work for senior citizens and others who could not afford legal services was exemplary. He was a decorated Korean War veteran who retired from the U. S. Army as a Major.

Bob truly loved his life the way most of us wish we could – with an incredible lust for life filled with adventure, a willingness to help others, a fascination with bagpipes, and a great love of nature and this planet. He never complained; we never knew he was ill. He was truly an optimist and a diplomat to all who knew him. He was my friend.

Bob has embarked on another great adventure – He will be deeply missed. (Please send donations in Bob's memory to Diana Y. Lejins, PO Box 8001, Long Beach CA 90808. Gifts will be donated to the Sierra Club.)



▲ Erv and Janet Bartel on the summit of Suicide Peak on July 3, 1995. This was the 200th peak for both Erv and Janet.

Robert Gordon Jones
travelled extensively. This picture was taken on a recent trip to Australia.



Current Trip Reports

Yucaipa Ridge

August 20, 1995

Leaders: Theresia Glover,
Patty Kline, Joe Young

Trip summary: Thirteen hikers climbed the peaks of the Yucaipa Ridge under overcast skies and cool temperatures. Three hikers added Allen Peak to complete their day.

Scouting: Joe had discussed various ways of ascending the ridge with David Eisenberg. David cautioned Joe that the route up Camp Creek could be thwarted if there were snow or ice in the waterfall. Alternatively, one could hike up the wash just east of Camp Creek and ascend the ridge in the middle of the wash, drop down to a another wash, then climb up to the saddle east of Little San Gorgonio.

On the Thursday before the hike Joe hiked up the Vivian Creek Trail a ways and looked at both Camp Creek and the ridge in the wash east of Camp Creek. Joe saw no snow in Camp Creek. He also observed that the alternative ridge looked doable. On the Friday before the hike Joe hiked up Camp Creek. He found the waterfall to be a raging torrent and he was unwilling to attempt to climb the wall to the right of it to get around. He concluded that the alternative ridge would be a better choice.

Scheduling: This outing was originally scheduled for June 11, but remaining snow in Camp Creek forced a postponement until August 20. Advertised in only in the **Lookout**.

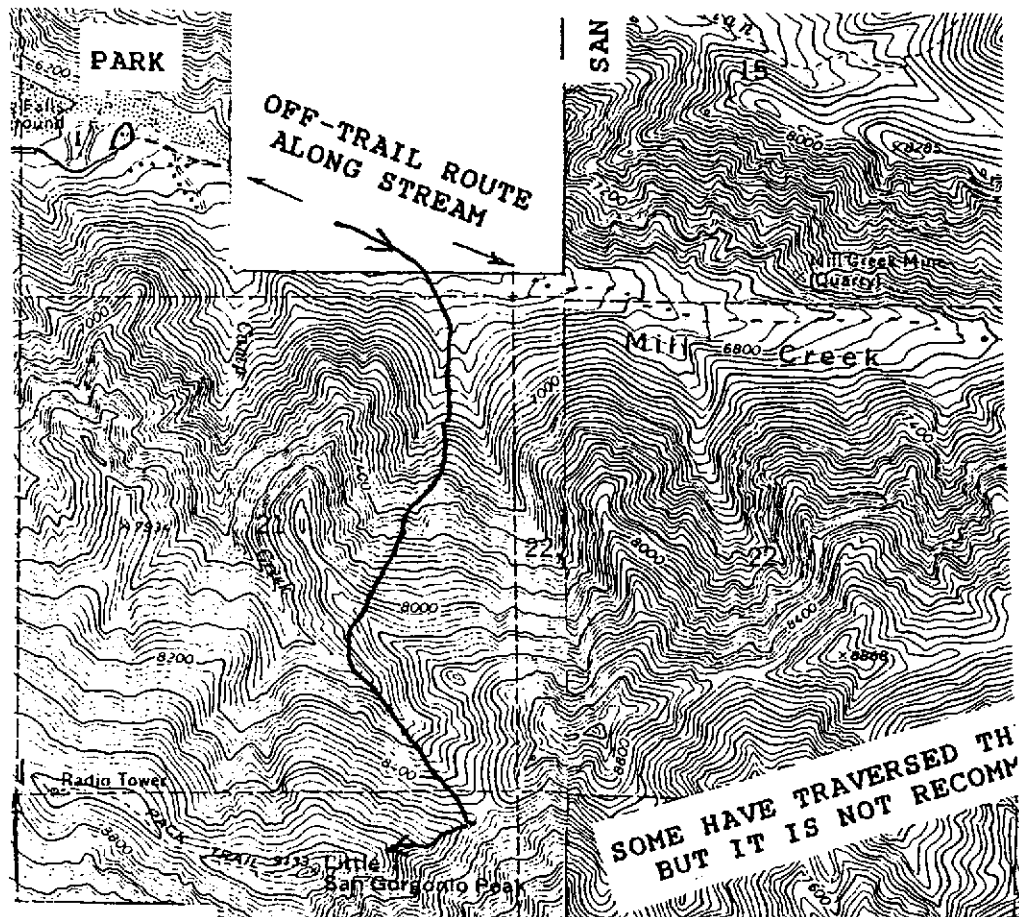
still thirteen hikers showed up at 6:00 am at the Mill Creek Ranger Station. We carpoled to a parking area suggested by the Hubbard Ranch people, then consolidated into four vehicles to the Vivian Creek road head where we began the hike at about 7:15 am.

Ascent: Theresia led the group up the trail along Mill Creek past the turn-off to Camp Creek to the entrance to the wide wash east of Camp Creek. Theresia led the group up the wash which contained flowing water. The leaders conferred from time to time to make sure they knew where they were. Soon we arrived at the foot of the wooded ridge coming north from Yucaipa Ridge into the center of the broad wash. The ridge can be distinguished from nearby ridges by the density of trees on it. (The other ridges are sparely covered.)

The map below shows our approximate route up Little San G. The ridge is steep at times but passable. Ascend the ridge to the southwest, and near 8100' begin to drop into the wash coming from the saddle at 8580'. This involves either side-hilling or brush; there is no perfect way to drop into the wash.

Theresia led the group up the wash to a point just west of the saddle at 8580', then up the ridge to Little San G. She arrived on its summit at about 11:15 am.

Bagging the peaks: After a brief rest on Little San G. Theresia led the group westerly over the bump with the radio tower to another bump where we looked in vain for a register. We concluded this was Wilshire Mtn. Hiking on we passed another bump but kept going. Joe, sweeping, noticed a large, unusually



shaped trail marker and shouted out to the others. The word was passed "we think we've found something!" Indeed we had found the true summit of Wilshire Mtn. Everybody then backtracked and signed in.

Leaving Wilshire Mtn the group inadvertently headed down the road toward Oak Glen. Joe and others at the rear shouted out that they were going the wrong way and everyone soon turned back. Joe then led the group over to Wilshire Peak. Light rain fell at this point. Joe then led the group to Cedar. Peter Doggett led a fast group to the summit. The register on Cedar went back to the 1960's. We took our second extended break on this summit.

After leaving Cedar it took a while before signs of the "pack trail" shown on the topo materialized. Joe, leading, eventually found a distinct trail after passing over a wide almost meadow-like area. We found a knocked-over duck along the north side of Birch, at which point Peter Doggett led swift hikers to the summit. This happened to be the peak where Peter had finished the list years ago.

The descent: Patty led the group down the northwest ridge of Birch to the trail, which soon became an overgrown jeep trail. We heard distant thunder, but it never seemed to threaten us. The group reconvened at road junctions. At the last junction Patty and two other hikers, split off to climb Allen. It was now about 7:00 pm. Everyone else hiked down to the cars, the last

arriving at about 7:50 pm.

Patty's group of three took the left hand branch of the road at the saddle at 5,200' . It took about 45 minutes round trip to do Allen from the saddle.

The light was totally gone as they descended the dirt road down to the Hubbard Ranch. They got out to Patty's Pathfinder at 9:30 pm and she drove Bonnie and Cesar Michel up to the Vivian Creek trailhead about 20 minutes away in pouring rain. Perfect timing. The rain started after the three got into Patty's vehicle.

Key points:

- The wooded ridge we used for our ascent is a practical alternative to Camp Creek
- The "jeep trail" and the "pack trail" shown on the topo connecting Little San G to Birch Mtn are, in fact, faint though distinct foot paths
- The cool weather and overcast skies were a blessing today

Mt Baldy to Lookout Mtn, and the unveiling of ERV BARTEL CANYON

September 16, 1995

**Leaders: Diane Dunbar and
Bobcat Thompson
By Diane Dunbar**

This was a particularly exciting hike because it involved a loop trip using routes that very few if any HPS people have ever seen, a spectacular ridge, all the way from the top, and a lovely shady hidden CANYON, both invisible from the standard routes, their very existence only known by their presence on a topographical map, and, in the case of the ridge, a partial

far-off view of it from miles above or below where it actually branches off.

Diane Dunbar and Bobcat Thompson, the leaders, met 3 participants in the Mt Baldy Church parking lot at 6 AM. (The participants were Jim Fleming, Betsy Horgan, and Lynn Robinson.) Everyone piled into one car, leaving the rest behind for the shuttle, and headed for Manker Flats. After offering extra water to everyone, (The original scouting trip ran out of water), the group set out toward the Ski Hut. We were paced moderately to conserve energy for the long hard day and to avoid any altitude sickness, nobody needs a headache on such a hard hike. After resting at the Ski Hut, we reached the summit of Baldy shortly after 10 AM, having started hiking at 6:30. We were serenaded with a funny song by Bobcat and Jim on the way up. It was a beautiful, clear day with a chilly wind. Oddly enough, nobody else was there until just before we left after a break. We were all alone on the summit with that beautiful view.

From there we descended to West Baldy, where Bobcat stood dramatically on the rock and recited, "Neither rain, nor sleet, nor hail...". (I run out of breath when I hike with Bobcat because he makes me laugh a lot.)

From West Baldy, we headed down to show the group "The Sink", an interesting geological formation on the ridge, appreciated by the group. We made good time down the ridge below the sink; the trail is in excellent shape there.

At the appropriate elevation and trail bearing, where we knew the hidden ridge was branching off but it was too steep to access, we continued until it was more gradual, crossed over the ridge leaving the trail behind, and backtracked North on the other side of the ridge, traversing and angling slightly down until we were on the ridge that leads to Lookout Mtn. I am not giving exact details here, comforted by the fact that anyone with the necessary alpine navigational skills to find this ridge will find the accessible route. It is definitely not for novices, a wrong move would be dangerously steep, but for someone with good nav skills, it is quite negotiable, and offers some of the most spectacular scenery in the area.

We began at this point to descend on this ridge, enthralled by the views dropping so far below us of Cow CANYON, Cattle CANYON, and Coldwater CANYON; all of Bighorn Ridge, San Antonio Ridge and Big Iron, and many of our favorite far-off peaks in the San Gabriel Range, seen from a very different perspective. Somewhere ahead of us, or more likely over the steep edge beside us was a herd of Bighorn Sheep, leaving their signs to show they were there. The closest we got to them was to see the dust and rockslide left behind them at one point as they fearlessly dropped over an unbelievable edge to avoid us. Across the CANYON to the North was real bighorn country, true Sheep Mountain Wilderness; slopes so

steep and crumbly that they defied any method of climbing except bighorn sheep hooves. One side of this ridge is nice soft footing, forested steep but lovely, and this is the side we stayed with, staying high enough on the crest to still see the impressive drop to our right. That is the beauty of this ridge, it combines the spectacular impossible views with a very negotiable slope.

Our descent so far was punctuated occasionally by Jim Fleming's cartoon-like vocal imitation of what he calls "Falling Man". At 7800', this ridge branches quite suddenly to the west, the wrong part descending invitingly forward, when in effect, above the thick trees to the right, a small bump on the ridge is just barely visible indicating the correct branch to take. This is an extremely crucial turn, if it was missed, the hikers would find themselves in a remote part of West Bear CANYON, a bad place to find their way out of. This West branch of the ridge is the best part of the trip. To the right of this ridge, as we followed along the crest, dropped a wonderful "mini-Grand-CANYON". There are places where we could stand and look straight down 200 feet of sheer granite walls to the bottom, right in front of our toes!!! The footing here on the ridge crest and on the left side was still nice, soft though steep. At the point where the ridge turns SW again, it descends 1,000' in ~2 mile to a saddle. This slope is a lovely forested soft scree run, safe as can be.

Those of us with head-nets

used them here, the blackflies were there en force in this saddle. Bobcat led down this whole ridge, and his route finding was great. He led us more over than around the 2 bumps next to Lookout on this ridge to avoid heavy brush. We kept scanning the lower slopes of Lookout Mtn for the easier trail down, but ended up coming down the steep slippery ridge off the top of Lookout after we climbed it. A dramatic Bobcat recited Shakespeare and Chaucer as he sat on a rock on top, before he led us down.

After this steep, slippery descent from Lookout itself, (the hardest part of the whole trip) we prepared to unveil ERV BARTEL CANYON. Now, I ask you, why should we fight our way down sweating in the sun with no shade, down the grossly overgrown with brush and washed out trail to Cow Canyon Saddle when we could take lovely ERV BARTEL CANYON in the shade, splash our faces in the stream, and follow the trail past those quaint cabins to the church parking lot in one short hour? ERV BARTEL CANYON descends down from Lookout Ridge at the 6600' saddle, at a bearing of 140°. It is hidden by brush at the saddle. Here is a description of our route: From the clearing in Saddle 6600', the one with the fallen tree that serves as a seat during breaks, continue for about 15-20 feet on the trail toward Cow Canyon Saddle. Turn left up through the trees to another clearing above the trail. At the far end of this clearing is a break in the trees and brush where you

step over a fallen tree branch. Continue east and north routefinding through the trees and brush (not bad, we found a route through, and it was not nearly as much brush as if we had gone down the overgrown trail) gradually descending when you can until you can see ERV BARTEL CANYON down to your left, descend and follow it gratefully down in the shade. What a picturesque CANYON, lovely, steep, but soft footing and therefore very do-able for an experienced group. There aren't even any dry waterfalls!! And once you are in it, it is almost completely clear of brush. Near the bottom of this CANYON, a small perfectly formed Christmas Tree can be seen ahead of you in the middle of the CANYON. Heads Up!!! Turn Left at the duck here and traverse dawn along the left side of the CANYON until you pass the only steep slippery place in the CANYON. It can be very easily avoided. Descend again into the canyon to follow alongside a large burned black tree trunk to the bottom of the CANYON. There is sparse poison oak here, (not too much, easy to avoid) and same stinging nettles, also, which can be avoided if you are alert to them, at this point where the CANYON meets the stream. Cross the stream, splash your face, and continue directly ahead up the slope on the other side. The trail to the village runs all the way along this slope, about 25 feet above the stream. You will reach it at almost the exact place where the Bear Flat Trail leaves the road (trail) that runs along the cabins. I am very anxious for

others to use ERV BARTEL CANYON so that the way through the brush at the top becomes more and more obvious, and the CANYON more and more is used as an alternate shady route in the memory of ERV BARTEL. I love this CANYON. We all signed a card to Jan Bartel, describing the CANYON to her and expressing our wishes that this will comfort her, knowing there is a CANYON in his name. The hike took us 10 hours, from Manker Flats back to the village church parking lot.

Thank you Jim Fleming, Mike Baldwin and Frank Goodykoontz for scouting various portions of the trip at different times with me, and especially THANK YOU BOBCAT for scouting and leading this momentous and meaningful trip with me. WHAT A DAY!!!

Private Trip Reports

Bagging the Ultimate North American Peak – Mount McKinley/Denali (20,320')

May 1995

By Roxana Lewis

The outfitter I chose was American Alpine Institute, Bellingham, WA. The cost was about \$4,000. The challenge took three weeks. Our group consisted of seven climbers and two guides. We individually carried loads of 90 – 100 lbs in both a backpack and a sled tied to the waist and dragged behind. These loads contained clothing, climbing gear, tents, food and fuel for 22 days.

The landscape was

beautiful, endless glaciers make up the Alaskan Range. The horizon is white forever. There are no trees. There are no animals with the exception of an occasional raven that has flown off course. There is no sound except the crunch of snowshoes walking on an endless uphill course.

Like Sisyphus, we spent our days carrying our loads from Camp 1 at 7200' to a spot designated as Camp 2 at 9600'. We would dig a big, deep hole and bury our loads. Then we would trudge back downhill to Camp 1 where our tents and nice warm sleeping bags awaited us. We would melt snow for water, we would prepare and eat dinner, we would fall into our bags exhausted.

The next morning we would arise at 7:00 am, melt snow for water, prepare and eat breakfast. Then break camp, collapse and pack tents and gear, reload our backpacks and sleds; then trudge back uphill to the point we had flagged as Camp 2 only the day before. We would then proceed to dig up our cache and set up Camp 2. Tents go up, gear comes out, latrines get dug and ice walls have to be constructed. Snow must be melted, dinner prepared and exhausted sleep embraced.

On our good days we moved our camps progressively higher up the mountain in bright sunshine. We repeated our daily routine of breaking camp and making camp. But McKinley isn't known as a fair weather mountain. Sunshine never lasts on McKinley. At its very worst, we endured minus

40 temperatures with winds blowing in excess of 80 mph. There were nights when 8' of snow fell.

We struggled in spite of these conditions to our final camp at 17,200', from which we would make a try for the summit. We waited, trapped in our tents by weather so fierce that communication was by shouting. We waited until our food stores dwindled and dinner became one packet of cup of soup. And still we waited; six days we waited. Time and luck ran out.

We had a brief weather window which allowed us to get the heck off the high mountain before the next front. However, we were forced to descend for an unrelenting 24 hours. My McKinley experience was a pip. It proved to me that success is the journey not the destination.

**REPORT ON A "NEW"
10,000-FOOT PEAK THAT
BELONGS ON "THE LIST"**

By Bob Michael

The list of named 10,000-foot peaks in Southern California has grown to 19 with the official naming of Newton Drury (or just Drury) Peak, a 10,160+' summit on the "roof" of the San Jacintos west of the summit crest. It is not named on the (1981) San Jacinto Peak 7½' topo; the name was bestowed by the US Board on Geographic Names after this map was published. However, the name is shown on the Forest Service "A Guide to the San Jacinto Wilderness" special map (1989).

On a recent August Saturday, my Las Vegas buddy

George Quinn and I set out up the Marion Mountain Trail to re-complete my collection of the Southern California "10ers". This trail, for those who have never experienced its pleasures, is a relentlessly steep 2.5 miles that feels like 7 miles on a well-graded trail. Dispensing with such technicalities as switchbacks, it goes straight up, sometimes between boulders – it's one of those trails that on the way down makes you say, "I can't BELIEVE we went up this!". The trail gentles out a bit at 8500'. Shortly thereafter, one joins the Pacific Crest Trail for half a mile; at about 8950', veer right on the Deer Springs Trail which heads toward Little Round Valley and the summit of San Jacinto. At Little Round Valley, the route leaves the trail for the peak which is only about a quarter mile to the south with less than 400' of elevation gain. We rested by the creek which flows from this lovely, peaceful glen, enjoying the music of the water gliding over dark amber sand between lush grassy banks. All along the route, the running water and the verdant greenery - a legacy of last winter's snowpack - was just amazing for the end of August.

From Little Round Valley at 9800', the route heads a little east of south, up moderate slopes to the summit area. This slope is a classic example of the open, dry boreal forest on the roof of the San Jacintos—gnarled and twisted ancient-looking limber pines with big white granite slabs and boulders in between. (It's interesting to see how different species of pines - limber, foxtail,

and bristlecone - all resemble each other in the near-timberline areas or, respectively, the coastal ranges, the Sierra, and the desert ranges.) The summit is most easily approached from the southeast; it is a pleasant, almost enchanted place of wind sculpted trees, big white granite chunks, and chinquapin bushes. The highest boulder is easily topped with a short "2.9" move. We found a nesting-red-can register in a pothole on top that had been placed just a month before by the "San Diego Peaks Section" (Paul Freiman et al.). There had only been one other ascent in the intervening month.

Drury Peak offers a splendid view of the "ridgepole" of the San Jacintos from Folly Peak to Jean Peak from a unique western perspective. And, the open, craggy summit with its white granite and twisted trees compares favorably w-with most any peak on THE LIST. This peak is VERY enthusiastically recommended for List status.

Two final comments: 1) Who was Newton Drury, and now does he merit having this peak named for him?

2) It was great to get back into the local mountains; I'd almost forgotten how beautiful they can be. Since finishing THE LIST, most of my weekends have been devoted to beach volleyball, which is a lot of fun and (especially 2-man) a terrific workout...but it just can't offer the participant visions of Heaven the way the mountains do on a perfect day. I thought of a quote I read a long time ago from some Italian

alpinist..."The mountaineer returns to his hills because he remembers always that he has forgot so much."

**Cucamonga Pk, and
Etiwanda Pk
September 25, 1995
By Ray Soucy**

I had been wanting to do these peaks for quite some time, and it seemed that my schedule and a scheduled trip just never coincided. The solution: do my own trip.

The Icehouse Canyon route is a long day at 18 miles and 4000' gain, but the alternate route allows the trip to be done as a 12 mile, 3300' gain spectacular hike, so I was told by Carleton Shay. He said the San Sevaine Road is open aster Labor Day and is in better shape than the other road that comes up from Euclid. I was actually able to do about 10 miles of it in my Honda CRX when I scouted the drive one day, but I wouldn't recommend it to anyone without a high-clearance vehicle.

From conversing with folks at the Wednesday night hike at Griffith Park I was able to recruit several interested hikers to go along with me. Plans were struck, a date set and on Sunday the 24th at 7:00 am we convened at the Pomona meeting point. Fortunately, we had David Baldwin's and Lee Zebold's 4x4's so access would not be a problem. The gang also included Janet Claffin, Elaine Baldwin and Dianne Edwards.

A bouncing, roller-coaster ride on a dusty road

always adds excitement to the day and this 13-mile road did not disappoint us. After reaching the Joe Elliot Tree site, we headed up the Cucamonga Peak Trail at about 9:00. Bugs were a bit annoying as we made our way along, across and then out of the South Fork Lytle Creek, but this soon changed to a semi-forested section as we picked up elevation at a steady, moderate pace. It wasn't long before the view expanded before us showing Cajon Pass and Rte 15 as well as the fan-shaped drainage patterns of Lytle Creek. The scenery just kept getting better the higher we climbed, now including the peaks from Mt Baldy clockwise to Ontario Pk.

We reached Etiwanda first around 1:00 and had lunch with a breathtaking view before us: a sweeping 360 degree panorama including the nearby peaks as well as the distant San Bernardino and San Jacinto Mtns. After lunch it was off the Cucamonga Pk. We got there in about 30 minutes just as the haze was starting to intensify. This peak is obviously more popular than Etiwanda as we had much more company, no doubt due to access from Icehouse Canyon, a 7 mile jaunt.

It took us only 2 hours to return to the cars and after a few moments to relax and review the day's hiking, we bade our farewells and headed back down the "roller-coaster" road. Carleton, you were right! We all agreed that it was indeed a spectacular hike into the beautiful Cucamonga Wilderness.

**UpComing Trips Not in
the Chapter Schedule**

**November 19, 1995
Sunday**

Mt Akawie (7283')

**Leaders: Charlie Knapke,
Barbara Cohen, Bill T. Russell,
Dan Richter**

DEVRA WASSERMAN finishes the HPS List! Meet 11:00 am at the La Cañada ride-share point. Bring goodies to share at the party on the peak.

Devra would like to dedicate this event to the memory of the late Vi Grasso.

**January 28, 1996
Sunday**

**O: Mt Harvard (5441'),
San Gabriel Pk (6161'),
Mt Disappointment
(5960'), Mt Deception
(5796'), Mt Markham
(5742'), Mt Lowe
(5603')**

**Leader: PETER DOGGETT
Asst: THERESIA GLOVER**

Work off some calories ingested at the previous evening's HPS Banquet. Moderate 13 mi rt, 3700' gain. NO wimps or Winnebagos or rattlers. Meet 8 am @ La Cañada rideshare pt. Bring water, lunch, lugsoles, windbreaker. Heavy rain cancels.

REGISTER BOX

By Jim Adler

In the last period we again experienced moderate register growth, though the rate (8 new missing, 13 replaced) cooled somewhat from the last period. This steady though moderate growth should permit a soft landing without either fueling register inflation or plunging us into depression, though there may be new calls to jump start the replacement process.

Reports were received from Walter Studhalter, Dorothy Danziger, Mike Fredette, Peter Doggett, Carleton Shay, and Eric Fitzgerald.

In response to a question from a correspondent, old or full HPS registers should be left in place. While there is some debate about the practice of archiving historic Sierra registers, there are no known "historic" HPS registers, so the issue does not arise.

Missing and deficient registers:

2D	Onyx #2	missing	4-95
2E	Pinyon Peak	deficient	4-95
2N	Black Mtn #6	missing	2-94
6B	McPherson Peak	missing	8-95
6I	W. Big Pine	missing	5-94
6L	Madulce Peak	missing	5-94
9E	Mt. Lukens	deficient	5-95
12H	Mt. Harwood	missing	8-95
13E	Pallett Mtn	missing	11-93
14A	Mt. Waterman	missing	8-95
14F	Mt. Hawkins	missing	9-95
14G	Throop Peak	missing	9-95
14J	Ross Mtn	missing	9-95
16F	Thunder Mtn	missing	9-92
16J	Mt. Harwood	missing	9-95
17A	Sugarloaf Peak	missing	9-92
17B	Ontario Peak	missing	9-92
17C	Bighorn Peak	missing	9-92
17H	San Sevain	decrepit	5-88
21G	Bertha Peak	deficient	5-93
23A	Bighorn Mtn	missing	3-94
24K	Lake Peak	missing	6-94
24L	Grinnell Peak	missing	6-94
25A	Allen Peak	decrepit	8-94
26D	Ryan Mtn	missing	4-94
26F	Lost Horse	missing	1-95
27E	Folly Peak	missing	8-93
27G	Cornell Peak	missing	7-94

27H	Jean Peak	missing	6-94
28G	Spitler Peak	missing	9-95
28J	Pyramid Peak	deficient	11-93
28L	Lion Peak	deficient	5-94
28N	Rock Pt.	missing	2-94
29A	Rouse Hill	missing	11-91
30C	Martinez Mtn.	deficient	3-95
30F	Rabbit #2	too small	4-93
31D	Palomar Hi. Pt.	missing	4-94
31I	San Ysidro	missing	2-95
32G	Oakzanita Pk.	missing	5-95
32I	Garnet Peak	deficient	10-94
32L	Sheephead Pk.	deficient	4-95

If you are climbing any of the above peaks, please consider bringing a new register can and book. If you discover a peak which needs a new register can, please let me know by mail addressed to **Jim Adler, 836 S. Alandale Ave., Los Angeles, CA 90036-4625**, or telephone at (213) 931-6844. Also, please advise if you have replaced any of the missing or deficient registers or discover that any of the above reports are erroneous or out of date. (Since register books and pencils are so easy to carry all the time, peaks where only books or pencils are needed will not be listed.)

HPS Peak Guide Areas and Designated Deer Hunting Areas

By Carleton Shay

- Southern Sierra, North of Hwy 178
1ABCDEG: D8
1FHIJ: X10
- Southern Sierra, South of Hwy 178
All pks: D9
- Tehachapi Range
All pks: D10
- Southern Kern County West of Hwy 5
All pks: D13
- San Luis Obispo County
One pk: A
- Santa Barbara County
All pks: A
- Ventura County
All pks: D13
- Liebre Range
All pks: D11
- West of Mill Creek
All pks: D11
- Pacifico Mtn Area
All pks: D11
- Western Angeles Crest
All pks: D11
- Mount Wilson Area
All pks: D11
- North of Angeles Crest Hwy
All pks: D11
- South of Angeles Crest Hwy
All pks: D11

15. San Gabriel River Basin	All pks: D11
16. Mount San Antonio	All pks: D11
17. Cucamonga Peak Area	All pks: D11
18. Orange County	All pks: D15
19. Lake Arrowhead	All pks: D14
20. Big Pine Flat Area	All pks: D14
21. North of Big Bear Lake	All pks: D14
22. South of Big Bear Lake	All pks: D14
23. East of Big Bear Lake	All pks: D14
24. San Gorgonio Area	All pks: D14
25. Yucaipa Ridge Area	All pks: D14
26. Little San Bernardino Mtns	All pks: D12
27. San Jacinto Area	All pks: D19
28. Desert Divide	All pks: D19
29. South of Hwy 74	All pks: D19
30. Santa Rosa Mountains	All pks: D19
31. San Diego Cty N of Hwy 78	All pks: D16
32. San Diego Cty S of Hwy 78	All pks: D16

Deer Hunting Areas: Starting Day and Duration

A: 2nd Sat in Aug, 44 days
D8: 4th Sat in Sept, 30 days
D9: 4th Sat in Sept, 30 days
D10: 4th Sat in Sept, 30 days
D11: 2nd Sat in Oct, 30 days
D12: 1st Sat in Nov, 23 days
D13: 2nd Sat in Oct, 30 days
D14: 2nd Sat in Oct, 30 days
D15: 1st Sat in Sept, 30 days
D16: 4th Sat in Oct, 30 days
D19: 1st Sat in Oct, 30 days
X10: (1st part): Last Sat in Sept, 16 days
(2nd part): 3rd SAT in Oct, 16 days

HPS Major Dirt Road Status Report: September 26, 1995 By Peter Doggett

Road	Status	Estimated Opening	Peaks Impacted	Phone #	Extra RT Mileage (if road closed)
24S15	Open		Sunday, Split, Black #5	(619) 379-5646	13.2
22S05	Open		Cannel Point	(619) 379-5646	46.6
Santa Barbara Canyon Road	Open		Big Four, Lizard Head, Cuyama	(805) 967-3481	10.0
Dry Canyon Rd	Open		Lizard Head, Cuyama	(805) 967-3481	11.6
7N03	Open		Thorn Pt, Lockwood Pt, San Guillermo, San Rafael	(805) 646-4348	22.6
Shelby Cow Camp	??		Caliente Pk	(805) 861-4263	30.0
Potrero Seco	??		Monte Arido, Old Man	(805) 646-4348	28.2
6N10	Open		Alamo, McDonald, Sewart, et al	(805) 646-4348	29.4
7N23	Open		Liebre, Sawtooth, Burnt	(805) 270-1155	22.4
3N17	Open		Pacifico, Round Top, Granite	(818) 899-1900	12.6
1N34	Open		Buck Pt, San Sevaine	(909) 887-2576	16.4
3N14	Closed	1996	Hawes, Shay, Ingham, Little Shay	(909) 866-3437	10.0
5S04	??		Santiago, Modjeska	(909) 736-1811	24.0
2N26Y	??		Deer Mtn		6.2
3N36	Open		Silver Pk	(909) 866-3437	8.4
1N02	Open		Lake, Grinnell, 10K Ridge	(909) 794-1123	15.2
Millard Canyon	Closed	??	Snow, Kitching	(909) 794-1123	-
Geology Tour	Open		Little San Bernardino, Bernard	(619) 367-7511	26.0
4S06	Open		Ranger Pk	(909) 659-2117	2.0
4S12	Open		Indian Mtn	(909) 659-2117	5.8
4S01	Open		Castle Rock	(909) 659-2117	14.4
7S02	Open		Santa Rosa Mtn	(909) 659-2117	21.0
9S07	Open		Palomar High Point	(619) 782-3221	25.8

Editor's Note: This table is a new feature and is to be updated with each issue of the **Lookout**. Please send Peter Doggett [4121 Hathaway Av #5, Long Beach 90815-5129] any comments, revisions, suggestions, etc.

Minutes of the meeting of July 13, 1995

Present: Carleton Shay (Chair), Frank Goodykoontz (Vice Chair, Outings & Safety), Jim Fleming (Secretary), Theresia Glover (Treasurer), Southern Courtney (Chapter Council Rep., Conservation), David Eisenberg (Past Chair), Louis Quirarte (Peak Naming), Harry Freimanis (Outreach coordinator).

The meeting was called to order at 6:35 pm by Chair Carleton Shay at Griffith Park Auditorium

I. ANNOUNCEMENTS

- A. Joe Young set a deadline of July 29th for the next issue of the *Lookout*.
- B. Carleton received a letter from the Forest Service regarding access to the Millard Canyon area (trail head for Snow Peak and Kitching Peak). A new gate has been installed by the Indians to restrict access across their land.
- C. Carleton received items on outings recruitment program (and some other literature).
- D. There were/are meetings of the chapter schedule steering committee.

II. APPROVAL OF THE MINUTES

The minutes of the meeting of June 8, 1995 were approved

III. APPROVAL OF THE AGENDA

The agenda of the meeting of July 13, 1995 was approved as amended with the following additions under New Business: the suspension from the list of Snow Peak and Kitching Peak; the authorization of the printing of brochures; and a Nominating Committee report.

IV. OLD BUSINESS

- A. Oktoberfest update
 1. Carleton Shay received a letter from Joe Young indicating that the Zen Center will not be available.
 2. An ad for the next issue of the *Lookout* is needed - Joe Young will check his files for something (he did ads in years past).
 3. Julie Rush was to do an ad for the *Southern Sierran*.
 4. David Eisenberg will do tickets.
 5. Jennifer Lambelet indicated that she has a committee for cooking (although names/duties have not been disclosed).
 6. Entertainment has not yet been arranged.
 7. Cost for people only at dinner is \$20.00.
- B. Annual Banquet update
 1. Frank Goodykoontz is working on a speaker.
 2. David Eisenberg will print up tickets on his computer.
 3. Problem with late (last minute) registration was discussed. It was MSP (Eisenberg /Fleming) that the cost of tickets be \$24.00 with a \$5.00 surcharge per ticket if the tickets are not paid for by two weeks before the Banquet.
 4. Banquet information needs to get into the schedule (Frank Goodykoontz will follow up with Jennifer Lambelet).
- C. August meeting

Neither Frank Goodykoontz nor Carleton Shay will be in town for the August meeting. An Awards Committee and Nominating (Elections) Committee must be formed. It was decided to form these committees tonight. The Awards Committee shall consist of David Eisenberg, Jim Fleming, and Frank Dobos. The Elections Committee shall consist of Louis Quirarte, Carleton Shay, Ruth Dobos, plus any others who may volunteer. The August business meeting was cancelled.
- D. Award in Honor of Bill T. Russell

The suggestion is to give an award to new, promising leaders (e.g. Diane Dunbar, Theresia Glover). Jennifer Lambelet needs to put together a written proposal for the

award to be submitted as a Bylaws change (by September business meeting).

- E. Peak additions/deletions, bylaws changes - None have been presented to the Management Committee.
- F. Joint HPS/DPS/SPS meeting January 10, 1996 (Wednesday). It was MSP (Courtney/Eisenberg) to approve the joint meeting in its preliminary proposal form and the writeup for the schedule. Harry Freimanis will write an advertisement for the HPS *Lookout*.

V. NEW BUSINESS

- A. Suspension of Snow Peak and Kitching Peak
It was MSP (Eisenberg/Goodykoontz) to suspend Snow Peak and Kitching Peak from the HPS list until further clarification can be obtained from the Forest Service in regards to the access problems across the Morongo Indian land.
- B. Authorization of printing brochures
Harry Freimanis has run out of HPS brochures. It was MSP (Courtney/Fleming) to print 3,000 HPS brochures in yellow paper. Cost approximately \$50 per 1,000 plus set up fee.
- C. Nominating Committee report
Haven't had any volunteers to run for HPS Management Committee (as yet). At the meeting, Southern Courtney, Jim Fleming, David Eisenberg, Louis Quirarte and Frank Goodykoontz volunteered to run.

VI. REPORTS

- A. Chair
No report.
- B. Vice Chair/Outings
 1. Frank turned in 30 trips to the Schedule, and has 10 additional to turn in.
 2. Received literature on outings recruitment..
 3. Received a letter from the Angeles Chapter on outings - subscription fees.
 4. There may be a problem of access to Allen Peak (private property).
- C. Chapter Council Representative - Missed the last meeting. Not much was resolved there, however (Harry Freimanis did attend).
- D. Treasurer - We are still doing OK.
- E. No reports were received from the following: Secretary, Programs, Past Chair, Membership, Mountain Records, Peak Guides, Newsletter, Merchandise, and Adopt - A - Highway.
- F. Conservation
 1. Opposition to the Forest Service Plan to sell Ellsmere Canyon off as a land fill.
 2. Continuing fight to save the Ballona Wetlands.
 3. Passed recommendation that the Chapter opposes the use of a machine on trails in Los Angeles or Orange Counties which would widen them to 36 inches.
- G. Peak Naming
 1. Proposal is in gear - going to go with the 600 signatures collected so far.
 2. Wants the HPS to authorize use of the Angeles Chapter stationary for the proposal (with approval of the Ex Comm via the Chapter Council that they agree with our proposal). Louis Quirarte will get a proposal to Southern Courtney to go to Council with.
 3. Discussion of naming a peak in memory of John Backus (Louis Quirarte to pursue).
- H. Outreach Coordinator - Reports on Chapter finances and the Schedule situation - passed out recommendations to the Angeles Chapter Schedule Steering Committee. It was MSP (Eisenberg/Fleming) to support Harry Freimanis recommendations to the Angeles Chapter Schedule Steering/fund raising steering committee and all efforts to maintain the Schedule distribution..

VII. ADJOURNMENT

It was M /S/P (Fleming/Goodykoontz) to adjourn the meeting at 7:48 pm.

Respectfully submitted: Jim Fleming

HPS PEAK INFORMATION, MERCHANDISE AND MEMBERSHIP ORDER FORM

Peak Lists, Guides, Maps: Send requests to Bob Thompson, P. O. Box 633, Montrose, CA 91021

- HPS Peak List (printed): Send \$1.00 with your SASE
- HPS Peak List (diskette): Send \$2.50 + \$1.00 postage (IBM compatible only available at this time)
- Complete set of official HPS Peak Guides (Unbound with punched holes): \$28 plus
 - \$3.75 (3rd Class Postage) \$6.25 1st Class Postage
- Complete set of HPS Topo Maps (Unbound without holes): \$15 plus
 - \$3.00 (3rd Class Postage) \$3.75 1st Class Postage
- Separate individual HPS Peak Guides: Specify Peak Number from the HPS List, and send 25¢ each, plus postage as follows:
 - One to three guides: Enclose a business size SASE & 1 1st Class stamp
 - Four to nine guides: Enclose a business size SASE & 2 1st Class stamps
 - Ten or more guides: Enclose a 9" x 12" size SASE & 1 1st Class stamp per every five Guides requested

Merchandise: Send requests to Patty Kline, 20362 Callon Dr., Topanga, CA 90290

- HPS Patches: HPS Membership \$2.00 |
 HPS Leadership \$7.50 (100, 200, or List) | Include SASE
 HPS Emblem \$1.50 (Outside wreath) |
- HPS Pins: HPS Emblem \$12.00 |
 HPS 200 Peaks Bar \$5.50 | Add \$1.00 Postage
 HPS List Completion \$8.00 |
- HPS T-shirts: Small (light blue, golden yellow) | Each shirt \$9.00 each.
 (HPS Emblem Medium (ash, fuchsia) | Add \$2.00 Postage
 on front) Large (ash, gray, fuchsia, ice blue) | per shirt ordered
 X-large (ash, fuchsia, white, golden yellow) |
- HPS T-Shirts: Medium | Each shirt \$12.00 each.
 (San Bernardino Large | Add \$2.00 Postage
 & San Geronio X-Large | per shirt ordered.
 Pks on front; Colors available include ash, forest green,
 Peak List on purple, and turquoise.
 back)

Note: Save Postage! Come to HPS Social Programs and buy your merchandise at the meetings! Ask Patty about other items of HPS Merchandise available (pins, T-shirts, etc)

Item	Quantity	Size	Unit Price	Total
Postage must be computed separately. Please add indicated postage for each item ordered.			Postage	
Please make checks payable to the <i>Hundred Peaks Section</i> .			Total ▶	
Please include your phone number and SASE with each order.				

Membership: Send required information to Charlie Knapke, 13176 Ferndale Drive, Garden Grove, CA 92644

All membership applicants must supply their Sierra Club number (not required for subscription only). New member applicants should include a list of peaks together with dates climbed. All **Lookout** subscriptions can be paid a maximum of 3 years in advance (unless accompanied by an equal amount as a donation). Your expiration date appears on the address label. Only 1 subscription is required per household. When renewing your membership, please list all other HPS members who reside at your address to update their status. Make checks payable to the *Hundred Peaks Section*. Membership dues are not deductible for tax purposes.

- New Membership Membership renewal **Lookout** subscription only

I am enclosing \$_____ at \$9.00 per year for _____ year(s) plus \$_____ donation.

I am enclosing my list of 25 peaks climbed including dates. Leader Status: **O I M E**

Name: _____ Sierra Club Number: _____

Address: _____ City: _____ State: _____ Zip: _____

Phone: Home _____ Work _____ Birthday (optional) Mo/Day _____

From Your **Lookout** Editor

Send me your articles (disks or typed copy), special articles and announcements, trip write-ups, letters, and photographs pertaining to Section activities. If you send disks, please include a hard copy of your material. My publishing will be done on a Compaq Prolinea 4/33 computer, presently using Wordperfect 5.2 for Windows, and a Hewlett Packard Laserjet 4L printer. [I have access to computers which can read Microsoft Word 6 or Wordperfect 6.1.]

The deadline for receipt of materials for the next issue of the **Lookout** is December 10, 1995.



Include a SASE if you would like your submissions returned. Space and other considerations may preclude the publication of your submissions. Please mail your submissions [PLEASE INCLUDE SUFFICIENT POSTAGE] to the **Lookout** Editor

Joe Young
12551 Presnell Street
Los Angeles, CA 90066-6730

The **Lookout** Mailer is
Julie Rush
2432 Hidalgo Ave
Los Angeles, CA 90039

Please send address corrections to
Charlie Knapke, Membership Chair
13176 Ferndale Dr
Garden Grove, CA 92644



PUT
YOUR
AD
HERE

HUNDRED PEAKS **LOOKOUT**

The Sierra Club
3345 Wilshire Blvd #508
Los Angeles, CA 90010

Time Dated Material

NON-PROFIT ORG
U.S. POSTAGE PAID
LOS ANGELES, CA
PERMIT NO. 36438

Printed on
Recycled
Paper

