

## Chairman's Corner

by Alan Coles

On behalf of the new management committee, I would like to thank you for allowing us to serve the section, in this the 100th year of the Sierra Club.

Looking back over our records, one is impressed by the level of activity that is now occurring in the section. More trips are being led, more people are obtaining emblems and our publication, the Lookout, continues to improve. But also impressive are the types of outings being offered. In her trip report on Caliente Mtn in the previous Lookout, Patty Kline gives us a greater understanding of an area most of us knew little about when a BLM ranger accompanied them on the hike. Minor White and Ron Jones are leaders who have at different times led hikes in Joshua Tree N.M. to interesting historical sites as well as doing peaks. Bill T. Russell specializes in leading outings to peaks using innovative and unusual routes. It is not just quantity but the quality of our outing programs that continues to improve and diversify.

The goal of achieving an emblem is still the primary objective of most of you and our outings program will always respect this. But there is also a growing group within the section that is interested in other aspects as well. I have asked the management committee to be creative in their assignments this year and to come up with new ideas for our outings, programs and newsletter. If you have any thoughts or ideas, please feel free to send them to me or contact any of the committee members. Also, we can always use more leaders, especially those who can reach out and bring new members into the section. You don't have to be fast, just motivated.

### Congratulations

Compiled by Charlie Knapke

#### 2nd List Completion

#25 ♦ David Eisenberg ♦ December 27, 1991 ♦ Ken Point

#### 200 Peaks Bar

#290 ♦ Julie Rush ♦ December 8, 1991 ♦ The Pinnacles

#### 100 Peaks Emblem

#870 ♦ David Michels ♦ July 20, 1991 ♦ Shields Peak

#871 ♦ Janice Hartsell ♦ December 21, 1991 ♦ San Sevaine LO

#### 100 Leads

#13 ♦ Ruth Dobos ♦ December 7, 1991 ♦ Garnet Peak

#### New Members

Basil Anton

Robert Beach

#### Reactivations

Judy Ware

### Renewal Deadline

Deadline for renewal of your *Lookout* Subscription is March 31, 1992. Your renewal must be received by Charlie Knapke by that date.

We are unable to print extra copies so you will be unable to get a late copy.

### Inside the *Lookout*

Management Committee	... 2
Footnotes	..... 3
Additions and Changes to the Schedule	..... 7
Articles	..... 8
Peaks and Chews	..... 9
Banquet Report	..... 10
Peak List	..... Attached

## Angeles Chapter Conservation Committee

by Tom Armbruster

Condom distribution at LAUSD high schools was endorsed last month by the Chapter's Conservation Committee and Executive Committee.

The original resolution was drafted by the Population Subcommittee, and was worded to endorse the action as an AIDS preventative. The Conservation Committee dropped the reference to AIDS. As your HPS representative, I urged that the resolution be further reworded to endorse condom distribution as part of an overall population control framework, but the Committee didn't go along with that.

Those who know me well know that I work hard against AIDS: I volunteer as a state-certified HIV antibody test counselor at the Laguna Beach Community Clinic. Some readers will also remember my emphatic endorsement of the formation of the Gay and Lesbian Sierrans Sections at an HPS meeting four years ago.

But I also think organizations work best when they focus on central objectives. The Sierra Club focuses on the environment, and that includes population control. The Club is not involved in public health as such. That's why I wanted the condom resolution worded to be part of an overall population control program.

One other thing: I've been appointed to be your Chapter Secretary, and I also serve on the Chapter's personnel Committee. I would like to be relieved as your Conservation Committee Representative. If any reader would like to take over, or perhaps share the job with me by attending every other meeting, or even every third meeting, please give me a call.

## New Peak List and New Maps

by Bill T Russell

Attached to this issue of the Lookout is a revised Peak List. Ken Point is added to the list and typographic errors are corrected. In addition, the elevations of nineteen peaks are changed in accord with completely revised topo maps. These fine new maps are dated 1991. They replace some oldies from 1942 and 1943. The peaks that are affected are: Brush, Eagle Rest, Antimony, Cerro

Noroeste, Grouse, and Sawmill in area 4; Cuyama, Lizard Head, Monte Arido, and Old Man in area 6; and Lockwood, Reyes, Thorn Pt, San Rafael Pk, Ortega Hill, Ortega Pk, Chief, Hines, and Haddock in area 7. The New maps are: Cuddy Valley, Cuyama Peak, Eagle Rest Peak, Lockwood Valley, Old Man Mountain, Pleito Hills, Rancho Nuevo Creek, Reyes Peak, Sawmill Mountain, Topatopa Mountains, Wheeler Springs, and Lion Canyon.

### HPS Income Statement

January, 1992

by Leora Jones

<b>Income:</b>	<b>January</b>	<b>Y.T.D</b>
Membership	180.00	180.00
Merchandise	256.00	256.00
Peak Guides	0.00	0.00
Banquet	2,020.00	2,020.00
Oktoberfest	0.00	0.00
Donations	7.00	7.00
Interest Income	0.00	0.00
Miscellaneous	208.00	208.00
<b>Totals</b>	<b>2,671.00</b>	<b>2,671.00</b>
<b>Expenses:</b>		
Lookout Printing	0.00	0.00
Lookout Mailing	50.84	50.84
Programs	0.00	0.00
Peak Guides	0.00	0.00
Mtn Records	0.00	0.00
Sales Tax	0.00	0.00
Chair	35.41	35.41
Outings	0.00	0.00
Treasurer	0.00	0.00
Membership	12.53	12.53
Merchandise	0.00	0.00
Other Admin	9.54	9.54
Banquet	2,594.67	2,594.67
Oktoberfest	0.00	0.00
Misc.	0.00	0.00
<b>Totals</b>	<b>2,702.99</b>	<b>2,702.99</b>
<b>Adjusted Income</b>	<b>(31.99)</b>	<b>(31.99)</b>
<b>Cash Balances</b>		
Savings	1,416.95	
Checking	772.08	
Cash	91.69	
<b>Total</b>	<b>2,280.72</b>	

## Twin Peaks, Waterman

August 4, 1991

Leaders: Patty Kline & David  
Eisenberg  
by Patty Kline

On Sunday morning, we met at 8 am in La Cañada for my birthday hike. It was 12 miles and 3900' gain. There were 29 of us all together. 4 dogs were along, this being a K-9 hike. At the fork in the trail where one branch goes to Waterman and the other down to the Twin-Waterman Saddle, 2 dogs stayed back. They were my dog, a soon to be 9 year old German Shepard, Sarah, and John Neel's basset hound. Julie Rush graciously "baby sat" them while John took her dog Rushkie to the top of Twin. All in all, 2 dogs did Twin and all 4 did Waterman.

On top of Twin, we had an extended lunch complete with tossed green salad (in a garbage bag) and champagne.

When we got to the top of Waterman for the expected birthday cake and more champagne to be brought up on the ski lift by my daughter, there was no sign of them. It turned out the ski lift which the owners had assured me would be running that weekend was closed for repairs. The ski lift operates on a day to day basis on the summer weekends and can't be depended upon for long range plans.

Back at the cars at the start of the trail, my daughter and her boyfriend waited patiently with cake and champagne for 4 hours until 5 pm in hopes we would return in that time span. We had missed her by about ½ hour. She left the goodies by my car. After eating the entire cake and drinking some of the champagne in a matter of minutes, everyone left for La Cañada.

Those participating besides the leaders were Richard Shaw, Ben Yu, Matt McBride, Sandi Fischer,

Charlie Knapke, Steve Rothburg, Pete Doggett, R. Shoemole, Tom Petengin, Sheila Chiri, Carol Ryan, Susan Monroe, Frank Goodykoontz, Emma Burd, Dan Rollins, Beverly Rawles, Trudy Hanzmann, Roy Stewart, David Michels, John Neel, Julie Rush, Laura Lathrop, Richard Bame, Carl Brodene, David Stepsay, Ron Goldfarb, and Dove Menkes.



**Erik Siering's 200th Peak**  
Rosa Pt, December 8, 1991

---

## Mt San Antonio

October 5, 1991

Leaders: Patty Kline & Frank  
Goodykoontz  
by Patty Kline

This has become a tradition as my 5th annual hike of "Baldy form the Village" on the Saturday of Oktoberfest. Also, this is Frank's third year assisting me. It is a great

one for exercise with 11 miles round trip and 5600' gain. 7 of us met a 7 am at the Baldy Carpool Point.

We got to the top in 4½ hours, a leisurely pace according to the "animals" I know. After having lunch on top, Frank led us down the scree slope to the Baldy Ski Hut. The Ski Mountaineers were there on their annual work party. We stopped and visited for a few minutes. We were back to the Manker Flat roadhead by about 3:45. Some of us went on the Oktoberfest.

Those participating in the hike besides Frank and me were Barbara Pedersen, Jack Haddad, Bonnie Michel, Jennifer Lambelet, and Debbie Stump.

This hike will be repeated on the Saturday of Oktoberfest 1992, as my HPS List Finisher by doing Baldy first, then hopping over to Mt Harwood for my last peak. Frank Goodykoontz and Barbara Cohen will assist me. Dotty and Mike Sandford will lead a more relaxed group from Harwood Lodge to meet us before we climb to the top of Harwood. All of you are invited to join the party!

---

## Mount Wilson Via Rim Trail

November 2, 1991

Leaders: Brent Washburne &  
Southern Courtney  
by Southern Courtney

Brent led our group of three women and four men up 3910' on a 9.4 mile route to reach the Wilson Pavilion in 3 hours and 45 minutes. The snack bar had just been closed by the forest service for some vague reason. No ice drinks this warm day!

Our hike had started from Chantry Flats a few minutes after 8 am. We took the shaded Gabrielino Trail for our first 2.8 miles with 1390' of gain, to the Sturtevant Trail junction above Spruce Camp. Here we turned right (north) and

continued on the Gabrielino, not much shade on this part, for another 2.2 miles and 955' to Newcomb Pass. The Rim Trail starts at Newcomb Pass and climbs 1595' over 3.47 miles westward to reach the pavilion. The Rim Trail had outstanding views and varied terrain.

The return was via: Martin's Camp, Manzanita Ridge, Winter Creek Trail, Hoogee Camp, and Upper Winter Creek Trail. This route is only 7.11 miles.

The group was strong and fun to hike with. My thanks to all the fine hikers and to our pace setter, Brent.

## Bare Mountain

November 16, 1991

Leaders: Brent Washburne &  
Southern Courtney  
by Southern Courtney

Brent led our large group of happy hikers on his new route to Bare. It turned out to be a real roller coaster trail with about 2200' gain over 4½ miles. When we reached the top of the final pull, it was time for celebration for more than one reason.

Lynda Armbruster had bagged her Emblem 100 Peak with cheers and bubbly. Husband Tom had the Emblem Pin ready and pinned her on the summit.

I led the group down via the primary route which is much shorter, quicker, and mostly downhill. This way had one bad feature it took us near the shooting area.

But all 30 hikers made it out without broken bones or gunshot wounds!

Our thanks to all, and good going Lynda.

## Quail & Ryan

December 7, 1991

Leaders: Luella Fickle & Gordon  
Lindberg  
by Luella Fickle

By 6 am, all 5 participants met at the Joshua Tree National

Monument entrance station nearest the town of Joshua tree. It was a very breezy day, so all stops were very short. We were on top of Quail by 10 am. It was very cold and very windy. We made it back to the cars just after noon. We then climbed Ryan Mountain and were back to the cars by 3:30. Nobody, but the leader, wanted to do more, so we went home early.

Thanks to Gordon for his assistance and to Erich for driving. It was nice to revisit an always nice desert area. It was the first visit for participants George Thompson and Andy Britis.

## Santiago, Modjeska

December 14, 1991

Leaders: Joe Young & Wynne Benti  
By Joe Young

Seven hikers met at the Tustin carpool point at 7:00 am and caravanned to the roadhead for the Holy Jim trail. Upon review of maps we decided to drive south on the Santa Ana Freeway to the El Toro offramp, then head northeast on El Toro Road (S18) to the junction with Live Oak Road (S19). We arrived at the roadhead just after 8:00 am and began our hike at 8:35 am.

For about two miles the trail follows the canyon bottom, then turns abruptly left and starts up the westerly wall of the canyon. In another four miles the trail intersects the truck road which approaches the peak from the east. A latecomer joined us here. At this point we headed left and followed the road to the summit. (Had we chosen to continue on a trail for perhaps a mile, we would have turned right and in about 100 feet turned left at a concrete structure on to an unmarked trail. This is the Holy Jim/Coldstream trail which cuts off a bit of road walking.) We arrived on the summit of Santiago just past noon, and stayed there briefly.

At 12:30 pm we headed north from the summit on to the main road and missed the overgrown firebreak heading toward the Modjeska/Santiago saddle. So we continued on the main road to the saddle, then took the trail up the south face of Modjeska to the southwest ridge, then proceeded to the summit. We arrived there at about 1:40 pm and relaxed until 2:30 pm. The weather was cool and clear - about as perfect as could be imagined.



Joe Young and Wynne Benti atop Modjeska  
December 14, 1991—Joe's 46th Birthday

We headed back toward Santiago, taking the overgrown firebreak, easily visible from Modjeska, which we had missed earlier. We also used the Holy Jim/Coldstream cutoff trail, along which there is an unmarked junction where one goes straight (if going downhill) to stay on the Holy Jim trail and meet the road again. We then headed back down the Holy Jim trail. Darkness overcame us at about 5:00 and we hiked the last couple of miles in moonlight, except where trees blotted out the light. The four or five creek crossings consumed a bit of time, since the tallest vegetation occurs along the creek. We arrived at the cars at 6:05 pm.

Most of us stopped at a Pizza Hut along El Toro Road on the way back to the carpool point.

Thanks to Wynne for assisting on my birthday hike. This had been a long (20 miles), and hard (5,200' of gain) day.

## Granite Mtn No. 2

January 4, 1992

Leaders: Joe Young & Jim Fleming  
By Joe Young

Three hikers met at Scissors Crossing, east of Julian, at 11:00 am on a rainy, stormy weekend. While it was not raining in this area, skies were threatening and overcast. The preference of Jim Fleming and David Reneric was to bag Granite, so that's what we decided to do. Jim is a qualified leader, so he acted as assistant, substituting for Wynne Benti who was home assessing damage to her house from the prior rainy weekend.

We drove to the roadhead for route 2 and left my vehicle and David's there. Jim's friend Ellen drove us to the roadhead for route 3 in her plush vehicle, license plate "LNS VAN." She was not feeling well and left us at the roadhead and drove back to Julian. I checked my flashlight and discovered my batteries were weak, so Jim gave me fresh batteries. The three of us began our hike at 12:25 pm,

following the directions for route 3, the Washburne route.

We hiked up a dry creek bed, heading west, and began to gain elevation. As we did clouds surrounded us and visibility became greatly restricted, sometimes as little as 20 or 30 feet. We reached what appeared to be the ridge top and then climbed one bump on the ridge. Keeping to the ridge top we finally found ourselves heading in the proper direction to reach the summit. By this point all navigation was by dead reckoning. I had a map, compass, flashlight and altimeter (which I had calibrated at the roadhead). Jim had a compass and a map, and David had a compass which glowed in darkness.

Still climbing the ridge we broke above the clouds at perhaps 5,400' elevation. We spotted the summit and climbed toward it, arriving at 3:55 pm. The scene from the summit was spectacular, with clouds swirling below us and glistening peaks in the distance. A total annular eclipse of the sun was in progress and we could see the dragon taking a large bite out of the sun. However we knew that we must not dally on the summit because we were already faced with some nighttime hiking as it was. We were able to see the correct ridge to head for and we began our descent via route 2. At about 4:15 pm we left the summit, and shortly descended into clouds. Again we were in total white-out conditions. Occasionally we would see some vague form we thought would be a ridge or bump on a ridge only to find we were looking at a large bush or tree just a short distance away. I hiked with map, compass, altimeter, and soon flashlight at all times. The three of us constantly shared observations and proceeded slowly northeastward down the ridge. At one point I felt we had gone far enough and decided to descend slopes, hoping to drop into drainage leading to the large wash adjacent to the roadhead. We were soon in total darkness, and used the flashlight constantly. If we were not battling treacherous

footing, we were avoiding cholla, descending slick waterfalls, or plowing through brush. I became brain weary from routefinding and David led for a while. The terrain slowly but surely transformed itself from undefined slope to narrow, then wider creek bed. We rejoiced at the first stretch of soft sand and relatively pleasant walking. But we did encounter some more steep waterfalls, and the going remained slow.

Gradually the wash became well defined and more level. We could see faint lights in the distance. The wash became wider and very level, and we knew we were off the mountain. At last I sensed it was time to leave the wash and look for structures and we climbed up the left bank and immediately saw a dark form which proved to be a small water storage tank. Nearby was the house I had visited a week earlier when scouting, the one with the "Our Place" sign at the cul-de-sac near our vehicles. At 8:15 pm three weary, wet and greatly relieved hikers arrived at our vehicles and drove out.

Before the hike began Ellen had inquired about when to start worrying about us, and I foolishly said 6 pm! Jim told her 7 pm. After returning to the vehicles we knew we should contact Ellen, and since she was back at the Julian Hotel we stopped at a couple of houses and Jim asked to use a telephone to call her, but the owners refused to let him in. We saw a pay phone along the highway going back to Julian and Jim called Ellen, who was at that very moment talking to a sheriff in the hotel lobby. We were able to stop any search party from forming.

After driving back to Julian we all went over to the Rongbranch and quaffed some libations. We were too late for dinner. Jim, Ellen and David stayed in Julian that night, while I camped nearby. Any thoughts of hiking Whale the next day had been dashed by our day's ordeal and by rainy weather.



Jean Hermansen's Hundredth Peak on Whale

## Sheep Mtn

January 4, 1992

Leaders: Luella Fickle & David Eisenberg  
by Luella Fickle

David called Wednesday night and tried to talk me out of it. I told him I didn't know what the weather would be, I'd call him Friday and make the decision then. We had rain on Friday, but the weather forecast was for clearing and windy on Saturday so we decided to go for it. Austin and Betty Stirratt had written in December, so I knew we'd have two victims. Friday night, somebody called and said to Erich, "it's canceled, uh?" Erich told him it was a go. Mr Uh turned out to be George Thomas.

On the drive out to Pinyon Flats, we kept hitting pockets of ground fog. When we arrived there, it was foggy. A cloud hung over the northeast side of Toro Peak all day. We were in whiteout conditions most of the day. The hike out to a ridge short of Cactus Spring was uneventful. From there on it was pure map and compass work. David and I worked together. We made it to the top without incident. On the return trip, we hiked too fast and

had a little uneasiness before we arrived at Cactus Spring.

My thanks to the group for their silence when David and I were navigating. Thanks to David and Erich for all those compass bearings. Thanks to the USGS for their fine map! Thanks as always to David for his able assistance.

## Chuckwalla, Cross, Butterbredt, & Mayan

January 25-26, 1992

Leaders: David Eisenberg & Frank Goodykoontz  
by David Eisenberg

This was a Pathfinder's weekend. We climbed all of these peaks by an alternate route.

We met Saturday morning at 7:00 am and caravanned into the Jawbone Canyon area. We stopped at the normal trailhead for Cross. Our plan was to climb Chuckwalla first and then traverse over to Cross. While the route looked good on the map, we were aware that this was an exploratory route and that there was a possibility of unknown conditions.

Immediately after passing the gate, we headed toward the first wash on the left. (The topo shows a road traveling toward the White Rock Mine) Preferring a cross country route, we stayed to the left of the road until the bend at elevation 3000'. The canyon ahead looked attractive, with steep side walls and interesting strata so we took this route. We went up the ridge to the South when the canyon floor became brushy. When we gained the ridge, we contoured around until we were on the part we later decided that we should have gone up. (see hiking directions below.) We ran into a motorcycle track which we followed towards the saddle between Chuckwalla and 4762'. We ascended Chuckwalla when we were directly north of the summit, traveling straight up the scree slope.

From Chuckwalla, we followed Route 2 for Cross as shown in the guide. We took the scree slope down and returned to the cars by 3:30.

Doug Hatfield, Duane McRuer, Frank Atkin, Carol Smetana, Evan Samuels, Joe Young, Roy Stewart, and John Southworth returned home. David Michels, Martha Flores, and Ruth Armentrout joined us for dinner at Graziano's before going home. Only Jennifer Lambelet, Joy Mckinney, and Tom Moumblou stayed the night with Frank and I.

Sunday, we were joined at the meeting place by Tom Neely. We caravanned to the starting point for our Butterbredt pathfinder.

We parked where the word Road is written in square 32 on the topo. We climbed the ridge, passing over the bump at 6409'. This gave 1600' gain over about 1 mile. As we started up, we saw a car drive up and a hiker start running up the ridge. It turned out to be Jim Schoedler. Our hiking time was 1 hr, 10 minutes to reach the summit.

For Mayan, we took an easier route originally scouted by Lew Amack. We drove up the jeep road which starts at the normal trailhead. We continued to where there is a fork in the road. (located

directly under the words "Mayan Peak" on the HPS map) We contoured around to where the PCT meets a motorcycle track which comes up from the SW. From here, we headed towards the SE side of Mayan. This route involves only 1100' of gain spread out over a longer distance. It is ideal for those who wish a minimum of steep scree as the route is gradual for all but 500' of gain at the end.

We had thoughts of doing Skinner, but it was getting late and Frank wasn't sure he could make it! So we went home.

**Directions for hiking Chuckwalla:**

Start at the trailhead for Cross Mtn (route 1)

Pass the locked (or roped) gate and walk ¼ mile to where the White Rock Mine Road goes up the canyon to the left

Continue on the road ¼ mile past the bend to the SE at elevation 3000'. There is a major wash heading South at this point. On the map, the road crosses the boundary between Section 27 and 34.

Go south up the gully and then up to the ridge to the south. Continue along the ridge until you reach a motorcycle track.

Follow this track to the Saddle Between 4762' and Chuckwalla.

Head up the slope to Chuckwalla. (You may climb up anytime after you are on the North slope of Chuckwalla)

2500' gain, 3 miles. Hiking time should be about 2½ hours.

**Ken Pt**

*Alternate route and a 2nd time list finishing hike*  
by Frank Dobos

Four of us met December 27 at Hwy 74 at the PCT Trailhead. David Eisenberg informed us that he only

**Additions to the Chapter Schedule**

**February 23, 1992 Sun**

**O: Buck Pt, San Sevaine:** This strenuous hike is a reschedule of a cancelled hike earlier this year. 4000'+ gain, 18 mile roundtrip. Possibility of some snow on road. Meet 6:30 am Pomona Carpool Pt. Rain or deep snow on the trail will cancel. Leader: David Eisenberg. CoLeader: Frank Goodykoontz.

**March 14, 1992 Sat**

**I: Circle, Gobbler's Knob:** Easy paced moderate hike in the Wrightwood area. 1200' gain, 5 mi rt. Bring treats to share on the Summits. Meet 9:00 am at the Pomona Carpool Pt. Leader: David Eisenberg. CoLeader: Patty Kline.

**March 15, 1992 Sun**

**O: Kitching:** 2000' gain, 10 mi rt. Celebrate the end of Winter with this pleasant hike in the San Gorgonio Wilderness. Call Leader for Meeting place and time. Leader: David Eisenberg. CoLeader: Jennifer Lambelet.

**March 22, 1992 Sun**

**O: Josephine Pk (5558'):** Come celebrate the Dobos's third wedding anniversary (and you said it would never last!) Bring food, drink, goodies, love to share. Meet 9am at the La Cañada Carpool Pt. Leaders: Frank Dobos, Ruth Lee Dobos, Julie Rush, & Dotty Sandford. (1 mascot on leash)

**March 28-29, 1992 Sat-Sun**

**I: Martinez (6560'), Sheep (5141'):** 18 mi rt, 4000' gain. Moderately strenuous climb of 2 Riverside Cty Pks. Saturday, Backpack to Cactus Spring, climb Martinez Mtn. Sunday: Climb Sheep Mtn, Pack out. Strong hikers with recent backpacking experience. Send SASE to Leader: Ruth Lee Dobos. Asst: David Eisenberg

**Changes to the Schedule**

**May 16, 1992 Sat**

**Haddock & Reyes** will be led by me on the above date instead of the scheduled June 13, 1992. If the gate is locked, the shuttle trip will involve a different set of roadheads. Distances will be about the same. Leader: Luella Fickle.

needs Butterfly Peak, and he will finish the list the second time on the new addition, Ken Point. So we decided to hike over Butterfly to Ken. Jack Haddad already did Butterfly from the PCT so we were confident to find the way. Ruth and I were interested in doing some exploration in the area.

We drove to the trailhead, passing the Pathfinder Ranch where new fences are erected to keep hikers out or the ranchers in. The jeep road is in awful shape near the mine with huge boulders blocking the passage. We climbed up to the old mine and climbed Butterfly Peak. The weather was perfect, visibility unlimited. A storm was

coming that evening.

Dropping down from the peak to the SE, one meets a 4WD road located in section 28 on the Butterfly 7½' topo. This wide road crosses a creak, turns NE, passes Tunnel Spring, and climbs up the ridge to meet the PCT. At the Junction, there is a sign, you turn right and take the trail going uphill through a gate, while the Pct is going downhill. A mile further, there is a duck on the left side of the road. A trail starts here through the brush over the false summit to the peak.

There is a conflict: The 15' Idyllwild topo indicates the peak at 6464', while the 7½' Butterfly Peak



topo shows the elevation as 6423'. We need more research on this.

After we celebrated David's second time list finishing, we went back the same way and hiked the aforementioned 4WD road to its end where there is a "Prospect" marked on the topo. From here, we dropped down from the ridge and contoured in a gully to the West going over a small rise and finding the ducked trail which went back to the mine. The round trip took less than 8 miles hiking with 2400' gain. We did it in a little over 6 hours.

After the hike, we drove to Anza for a pizza, where we talked over some more upcoming listfinishings, planning parties and more hikes. We left for home while David went to find a dry spot for the night—he had a hike to lead Saturday. A storm was on the way...

## The Chester Versteeg Outings Award

by Bill Oliver

Every year several Club members are honored by the Chapter with an Outings Service Award. In addition, typically one individual is selected for the Chapter's highest outings leadership honor - the Chester Versteeg Outings Award. The inception of this prestigious honor dates back to 1976 when Maureen Cates, then Banquet/Awards Chair, went to the Chapter Archives at UCLA to research past awards. This effort resulted in the ExCom adopting a standardized list of awards. Duane McRuer took this opportunity to suggest the creation of a special award for outings, which was wholeheartedly adopted. Duane and Betty McRuer followed up with a \$500 gift to pay for plaques for ensuing awards. The Chapter's first Outings Leadership Award (OLA) went to Jerry Keating in 1976.

By 1987 it was finally decided that the OLA deserved a name title, similar to the Weldon Heald

Conservation Award and the Phil Bernays Service Award. Bob Cates, Chair of the History Committee, researched past out-standing leaders, and Chester Versteeg was selected from his list. Doug Mantle was the 1987 recipient of the new "Chester Versteeg Outings Award."

An excellent short biography of Mr. Versteeg (1887-1963) by John Robinson appeared in the DPS Desert Sage: Oct/Nov 1990 - #210; photo in #211. (Send me a sase for a copy of this article.) Mr. Versteeg, who is credited with naming many Sierra Nevada features, was honored in 1965 with the official designation of a 13,470-ft summit on the Sierra crest just SE of Mt. Tyndall as "Mount Versteeg." He is particularly renowned for his founding of the Desert Peaks Section in 1941.

I'm indebted to Maureen Cates, and have extracted liberally from her letter to me, regarding the origin of the Chester Versteeg Outings Award. She noted that three winners of the Phil Bernays Award prior to 1976 were cited for their outstanding leadership. Adding these names to those provided by current-Awards-Chair Gene Andreasen, we obtain the following list of honorees:

- '70 John Wedberg
- '72 Howard Stephens
- '73 Duane McRuer
- '76 Jerry Keating
- '77 Dick Akawie
- '78 Sam Fink,
- '78 Paul Lipsohn
- '79 John Backus
- '80 Chuck Wilts
- '81 Duane McRuer
- '82 Bill T. Russell
- '83 How Bailey
- '84 Mark Goebel
- '85 Ron Jones
- '86 Harry Goldstein
- '87 Doug Mantle
- '88 Bob Thompson
- '89 Dick Ramirez
- '90 Randy Bernard

The 1991 Award will go to **Randy Danta**, particularly for his sustained, exemplary work as Chair

of the Leadership Training Committee. Outings Service Awards for '91 will be going to **Frank & Ruth Dobos, David Eisenberg, Patty Kline, Igor Mamedalin, Suzanne Thomas-Mamedalin** and Bill Oliver. A Special Service Award has been earned by Jon Inskeep for his Sierra Madre Search & Rescue coordination efforts. Please join the Chapter in honoring all our new recipients of various outings and conservation awards at the upcoming Annual Banquet.

**A Centennial Celebration:  
Angeles Chapter Annual  
Awards Banquet  
Saturday, March 21, 1992  
6:00 pm Reception  
7:00 pm Dinner**

**Pickwick Banquet &  
Conference Center  
1001 Riverside Drive, Burbank**

**\$25.00  
Reservationist: Adam Burk  
(310) 645-7473**

## Topo Maps—How to Find Them

Update  
by Bill Oliver

Recall, the original expose appeared in the May/June '91 LOOKOUT. First, the bad news: the USGS Earth Science Information Center in the downtown Federal Bldg. was permanently closed last fall. This was a truly irreplaceable treasure. Bummer! I understand that the San Francisco and Menlo Park (largest) facilities are still open.

Another local alternative—Larry Tidball gets all his SPS, HPS and DPS (Calif.) maps at: **A.L.S. Maps (Air-Land-Sea), 610 N. Azusa Ave., West Covina (1 mi N of I-10). (818) 915-5165.** Mon - Sat, 9 am - 6 pm. Topos (7.5/15') go for \$3.23 each (+ tax = \$3.50).

Unfortunately, the USGS mail order operation out of Denver is



currently taking 2-3 months in delivery. This time should improve as a new computer system takes hold (or it may get worse!). Consider:

**Timely Discount Topos, Inc., 9769 W. 119th Drive, Suite 9, Broomfield, CO 80021. (800) 821-7609.**

Mon-Fri, 8 am - 4:30 pm (Mtn time). Their Regular Service offers 7.5/15' topos for only \$2.25 (a quarter off the USGS rate) + P&H. Delivery will still take as long as your direct mail order, however. Their ASAP Service, on the other hand, provides next day map shipment: \$3.50 each + P&H. (They basically stand in line for you at the USGS window.) I have only recently learned of this firm, and I have no personal experience with it.

Now that you, again, have your topo in hand - GO FOR IT!

## Peaks and Chews

by David Eisenberg

**Boccali's**

3277 Ojai-Santa Paula Rd.

Located at the bottom of Dennison Grade

Ojai, Ca.

805/646-6116

Sat-Sun 12-9pm.

No Credit Cards.

This is one of those small specialized restaurants located in converted houses that one is likely to find when driving cross country. They can be recognized by their unpretentious looks and crowded parking lots. We found this gem while traveling from the Hines trailhead to the Chief Trailhead. The menu is small, but this only means that they can concentrate on perfection in the other dishes. (You must also walk outside to the bathroom which is located at a side door!)

The pizzas offer a wealth of ingredients. You can choose from

## West Liebre Lookout

by John Robinson



The West Liebre Lookout was built by the CCC in 1936. This is one of only two enclosed tower lookouts in the Angeles National Forest. This lookout was removed in the late 1960's.

Pepperoni, Sausage, Mushroom, Olive, Bell Pepper, Onion, Garlic, Zucchini, Canadian Bacon, Pineapple, Green Chile, Chicken, Artichokes, Fresh Tomato, Shrimp, Crab, and Anchovies. Pizzas come in only 14" and 18" sizes.

The best part comes if you order from the menu. Lasagne and spaghetti comes in either Meat or Vegetarian versions. The Lasagna and Eggplant Parmesan are both baked in individual casserole dishes as you wait. You will never want to eat Lasagna scooped out of a casserole dish again!

Bottled and draft beer is available. There is also a wine list.

The Next *Lookout* Deadline is  
**April 1, 1991**

## Trail Updates

by Brent Washburne

**1B BOHNA PEAK**—Added mileage, gain for route 2, per input from Patty Kline.

**1C S P L I T MOUNTAIN**—Removed all reference to brush, per input from Patty Kline.

**1H OWENS PEAK**—Corrected mileage from L.A., per input from Frank Dobos.

**1I FIVE FINGERS (AQUILA PEAK)**—Corrected mileage from L. A., per input from Frank Dobos

**2C NICOLLS PEAK**—Corrected mileage from L.A., per input from Frank Dobos

**2M H E A L D PEAK**—Corrected mileage from L. A., per input from Frank Dobos

**7G A L A M O MOUNTAIN**—Corrected a minor typo error, per input from Patty Kline.

**7I S E W A R T MOUNTAIN**—Clarified driving route 2, per input from Alan Coles.

**7P CHIEF PEAK**—Clarified the driveup Statement to mean 4WD only. per input from Frank Dobos.

**10D BARE MOUNTAIN**—Removed any reference to the discontinued route, and added return trip elevation gain, per input from Tom Armbruster.

**15A MONROVIA PEAK**—Expanded the driving descriptions on road 2N24, which can be used from the E (Hwy. 39) end. They now will issue you a permit and the lock combination. per input from David Eisenberg.

**23A B I G H O R N MOUNTAIN**—Corrected driving directions (omit fork at 3.4 miles of New Dixie Mine Road). per input from Frank Dobos.

**23E MEEKS MOUNTAIN**—Clarified hiking directions, per input from Frank Dobos

- 24A CONSTANCE PEAK**—Added mileage, time for route 2. per input from Frank Dobos.
- 24J 10K RIDGE**—Added a cross-country but shorter route, per input from Frank Dobos.
- 25J SNOW PEAK**—Corrected peak location to "8mi. NE of Banning", and minor editorial corrections. per input from Frank Dobos.
- 280 KEN POINT**—Added a writeup for this peak recently added to the list. per input from Terri Sutor.
- 31A EAGLE CRAG**—Added USGS topo Aguanga to the map references, per input from Frank Dobos.
- SGT-6 TOPO FOR PACIFICO AND BARE MOUNTAINS**—Deleted the discontinued route up Bare Mountain, per input from Tom Armbruster.
- SAT-1 TOPO FOR SANTIAGO AND MODJESKA PEAKS**—Added trail near to and between the peaks, per input from Richard Schamberg.
- SJT-13 TOPO FOR LOOKOUT MOUNTAIN #1**—Revised this map to show the start of the trail to Ken Point, per input from Terri Sutor.
- SJT-17 TOPO FOR BUTTERGLY PEAK, ROCK POINT, AND KEN POINT**—Revised this map totally so it includes Ken Point, showing the trail described by Terri Sutor

## Twenty Eighth Annual Awards Banquet

by Joe Young

Our Annual Awards Banquet was held on Saturday, January 18, 1992 at Les Freres Taix Restaurant. There were one hundred and twenty attendees.



Ron Jones Presides

Social hour began at 5:30 p.m. and many HPSers had already arrived by that time. Ron and Leora Jones brought in seven "care packages" which were to be raffled during the evening. Jon Sheldon and Ruth Feldon arrived and set up the reception table and also began selling raffle tickets. Patty Kline set up a table for selling merchandise.

Joe Young brought in raffle prizes, programs, and the award plaques. He and Tom Armbruster set out the printed programs, including one special program which served as the random selection for the evening's door prize, dinner for two at the Tam O'Shanter Restaurant.

Dinner began promptly at 7:00 p.m., and emcee Ron Jones opened the festivities with a joke and the first raffle prize. Dinner consisted of spinach salad, split pea soup, four different entrees (vegetarian lasagna, broiled halibut, roast duckling, and filet mignon), dessert, and wine. Evaluations of the dinner ranged from OK to excellent.

After dinner Ron Jones introduced the outgoing management committee and those seated at the head table. He led us through the traditional recognition of emblem holders, list finishers, pathfinders, and leadership pin qualifiers. Incoming Chair Alan Coles awarded Ron the Past Chair pin and introduced the 1992 Management Committee. Ron then reviewed the year from his perspective, raffled off more prizes, and told a few jokes.



Frank Dobos accepts the R. S. Fink Service Award



Charlie Knapke Receives the John Backus Leadership Award

Patty Kline then took the podium and acknowledged those who had led or were scheduled to lead the most hikes from July 1991 through June 1992. The top leaders during this period are as follows:

David Eisenberg	88 Day-Leads
Frank Goodykoontz	65
Frank Dobos	33
Dr Ruth Lee Dobos	32
Charlie Knapke	32
Patty Kline	21
George Schroedter	20
Alan Coles	19
Joe Young	16
Luella Fickle	14

Patty presented a special tee shirt to Frank Goodykoontz which said "Just Barely Making It," and she presented a stuff sack (donated by REI-Northridge) filled with three dozen cookies and other items to David Eisenberg.

After raffling off more prizes Ron announced our annual awards. A Special Award was presented to Brent Washburne for his work on Mountain Records. Brent is doing a fine job carrying on in the tradition of Warren Von Pertz, Paul Lipsohn and John Backus. The 1991 Award

for Conservation was presented to Sally Reid. Sally is a long time supporter of the HPS, a former member of the Angeles Chapter Executive Committee, and she has long supported and indeed led efforts to preserve and protect the wild areas of the Los Padres mountains. The 1991 John Backus Leadership Award was presented to Charlie Knapke. Charlie has been a prolific leader for the Section and he

as served as chair of the Adopt-a-Trail committee as well as Membership Chair. Our Section's highest award, the R. S. Fink Service Award, was presented to Frank Dobos. Frank has served on the Management Committee several years, including as its Chair, and has also been an extremely active leader for the Section.

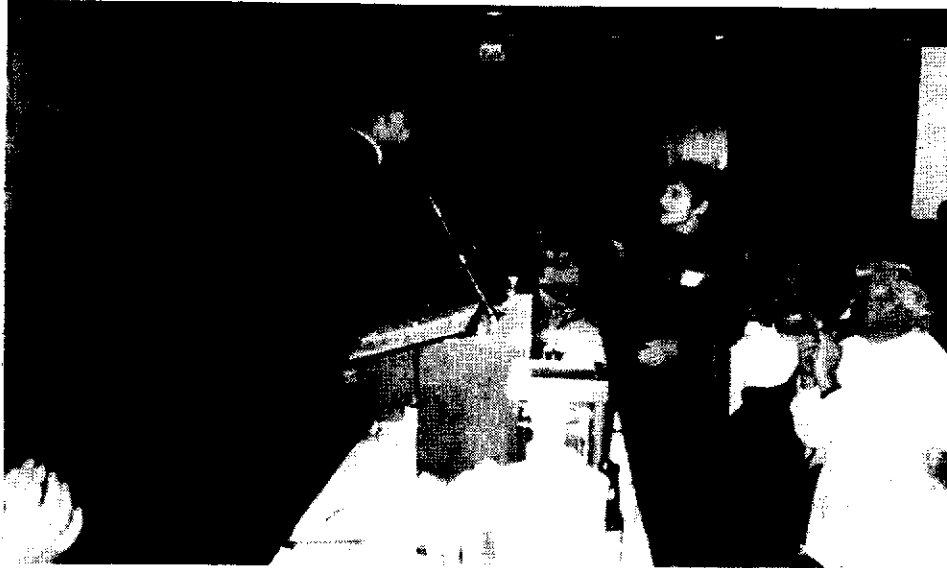
After the awards were presented Alan Coles introduced our speaker, Alasdair Coyne, of Ojai. Alasdair presented a program on Keeping the Sespe Wild, and his presentation included scenes along the Sespe Creek interspersed with information about the Sespe Creek which is threatened by a proposed dam in the Fillmore area. Alasdair pointed out that any additional water supplies made available from damming the Sespe would be small compared with other sources, such as development of reclaimed water in Ventura County.

Our scheduled program was to have presented by Nate Clark. Nate was unable to be present because of medical reasons.

Many thanks to all who helped make this a successful banquet. Ron



Brent Washburne receives the Special Award for his work on Mountain Records



Sally Reid receives the Conservation Award

Jones did a fine job as emcee, and he and Leora really took to heart my suggestions to enhance our raffle prizes with their contributions of care packages and gift certificates to the Soup Exchange. Care packages were won by Madeline Ripey, Hanna Shay, Laura Webb, Southern Courtney, Allen Holden, Sandy Houston, and Austin Stirratt. Geri Marston provided annual passes to plays at the Basement Theatre in Pasadena, won by John Aul, and tickets to any play this year at the Pasadena Playhouse, won by Ted Ehrlich, Arthur Shain donated a beautiful framed photograph of California Poppies taken last April. This was won by Wayne Norman. Alasdair Coyne donated a framed water color picture of a scene along the Sespe and a Keep the Sespe Wild tee shirt. These were won by Joe McCosker and Art Schain respectively. David Eisenberg provided a book, which was won by Betty Stirratt; Bobcat Thompson provided a puzzle, won by David Czamanske; Frank Goodykoontz provided a first aid kit from REI-San Dimas, won by Betty Stirratt; and Lynda Armbruster donated two raffle items. Jim Fleming won a

Sierra Club Calendar, Terri Sutor won a blue HPS T-shirt and tickets to Johnny Carson, John Neel won a teeth cleaning, Frank Dobos won a certificate to Soup Exchange, Lloyd Williams won a \$25 REI gift certificate, and Jennifer Lambelet won the ever useful book, *How to Shit in the Woods*. The door prize was won by Joe McCosker.

Lynda and Tom Armbruster also performed an invaluable service to the Section—they chauffeured Sam Fink to the banquet! Alan Coles deserves thanks because it was he

who suggested Alasdair Coyne to be our speaker. Alasdair was gracious to accept our request on very short notice. Ruth Feldon did an excellent job as reservationist, and she and Jon Sheldon handled the reservation table as well as selling raffle tickets at the banquet. Thanks to all of you.

## Leadership Training Seminar

April 11, 1992—Saturday

*You* can become a qualified Sierra Club Leader! All applicants must be Sierra Club members and have participated on 5 Sierra Club trips or hikes. Held at beautiful Griffith Park Ranger Station. *Deadline* for the *return* of **completed** enrollment forms is *March 28, 1992*. There is *no* registration after the deadline or at the door on the day of the seminar. Send a SASE and note requesting information letter, enrollment form and double-sided information sheet to:

Alice Bannister, LTC Registrar  
1284 Oakridge Dr.  
Glendale, CA 91205

*Mail early* to insure your participation in this spring's Leadership Training Program!



Alan and Janet Coles with the Evening's Guests, Mr. & Mrs. Alasdair Coyne seated at the head table.

# HPS MERCHANDISE & MEMBERSHIP ORDER FORM

Peak Guides

**Bob Thompson:** P.O. Box 633, Montrose, CA 91021 **Please send me** the following HPS Guides:

- HPS Peak List:** Send \$1.00 with your SASE.
- Complete Set of Official HPS Peak Guides:** *Unbound with punched holes. \$28 includes 8¼% sales tax.*
  - \$2.75 3rd Class Postage.
  - \$5.00 1st Class Postage.
- Complete Set of HPS Topo Maps:** *Unbound with no holes. \$15 includes 8¼% sales tax.*
  - \$2.00 3rd Class Postage.
  - \$3.50 1st Class Postage.
- Separate individual HPS Peak Guides:** Send the peak number from the HPS List, 25¢ each, (includes tax) and postage as follows:  
 ONE TO THREE GUIDES: Enclose a business size SASE & one 1st class stamp.  
 FOUR TO NINE GUIDES: Enclose a business size SASE & two 1st class stamps.  
 TEN OR MORE GUIDES: Enclose a 9"x12" SASE & one 1st class stamp for every five.

Merchandise

**Patty Kilne:** 20362 Callon Dr., Topanga Canyon, CA 90290. **Please send me** the following Official HPS Items:

**Merchandise List:** (8.25% sales tax is included in all prices. Save on postage by purchasing your items at the HPS meetings.)

**Patches:** (Include a 29¢ SASE) HPS Membership—\$2.00; HPS Emblem (Outside Wreath)—\$1.50

**Pins: (\$1.00 postage)**

- HPS Emblem Pins—\$12.00
- HPS 200 Peaks Bars—\$5.50
- HPS List Completion Pins—\$8.00
- HPS Pathfinder Emblem Pins—\$15.00

**HPS T-shirts:** Small(S), Medium(M), Large(L), or X-Large(XL) \$9.00 (\$2.00 postage)

**Blue** (S, XL); **White** (M, L, XL); **Grey** (M, L, XL); **Gold** (S, XL); **Turquoise** (L, XL); **Bright Blue** (XL)  
 (Please specify an alternate choice of colors on the order form.)

**1989 Oktoberfest T-shirts** (S, L)—\$5.00

**HPS Mugs with Gold Emblem:** Small Blue—\$7.00 or Large Black—\$8.00. (HPS mugs are now available only at the meetings.)  
*There is a special 2 for 1 Mug offer for a limited time only!*

Item	Quantity	Size	Unit Price	Total

Postage must now be computed separately. Please add for each item ordered.

**Postage:** \$

Please make all checks payable to the HUNDRED PEAKS SECTION.  
 (Please include your phone number and SASE with each order.)

**Total:** \$

Membership

**Charlie Knapke:** 13176 Ferndale Drive, Garden Grove, CA 92644

*All membership applicants must supply their Sierra Club number. (not required for subscription only) New member applicants should include a list of peaks together with dates climbed. All Lookout subscriptions can be paid a maximum of 3 years in advance. (unless accompanied by an equal amount as a donation) Your expiration date appears on the address label. Only 1 subscription is required per household. When renewing your membership, please list all other HPS members who reside at your address to update their status. Make checks payable to the HUNDRED PEAKS SECTION. (Membership dues are not tax deductible.)*

- New Membership       Membership Renewal       Subscription only
- I am enclosing \$\_\_\_\_\_ at \$9.00/year for \_\_\_\_\_ year(s) plus \$\_\_\_\_\_ donation.
- I am enclosing my list of 25 peaks climbed including dates.

Name: \_\_\_\_\_ Sierra Club Number: \_\_\_\_\_  
 Address: \_\_\_\_\_  
 City: \_\_\_\_\_ State: \_\_\_\_\_ Zip: \_\_\_\_\_  
 Home Phone: \_\_\_\_\_ Work Phone: \_\_\_\_\_  
 Optional Birthday (Month/Day) \_\_\_\_\_ Leader Status: **O I M E**



The Hundred Peaks Lookout is published bi-monthly by the Hundred Peaks Section of the Sierra Club, Angeles Chapter.

The Lookout is produced on an 486 compatible computer and HP LaserJet IIP using Wordperfect for Windows and a PostScript Cartridge.

### Subscriptions

Subscription to the Lookout is a requirement for active membership in the Hundred Peaks Section. **Dues must be paid before March 31 to avoid delinquency.** Renewals, **changes of address**, and new members should send form on reverse side and any remittance (payable to: "Hundred Peaks Section") to:

☒ **Membership Committee Chair:** *Charlie Knapke, 13176 Ferndale Drive, Garden Grove, CA 92644.*

Non Members may also Subscribe by sending \$9.00 indicating subscription only to:

☒ **Membership Committee Chair:** *Charlie Knapke*

### Articles and Letters

This publication is the official newsletter of the Hundred Peaks Section and welcomes articles, letters, and photographs pertaining to the activities of the section. Mail submissions to:

☒ **Lookout Editor:** *David Eisenberg, 510 N. Maryland Ave. #307, Glendale, CA 91206.*

{**Mailer:** Julie Rush, 2432 Hidalgo Street, Los Angeles, CA 90039.}

### Deadline for Publication

Please send photographs (Black & White, Color, or Slides OK), drawings, ASCii disks, or typed copy to the editor.

**Please use letter quality if you have a dot matrix printer.** Handwritten articles will **NOT** be accepted. The deadline for receipt of materials is the first day of even numbered months. Include a SASE if you would like to have your submissions returned to you. Space and other considerations may preclude the publication of your submissions.

### Peak Accomplishments

25 peaks for qualifying section membership

Emblem status accomplishments:  100 peaks,  200 peaks, and  completed peak list;  Pathfinder; and

Leadership. (*☒ One year membership in the HPS is required for emblem status.*)

Send lists of peaks and dates qualifying for membership or emblem status to:

☒ **Membership Committee Chair:** *Charlie Knapke*



The Sierra Club  
3550 West Sixth Street #321  
Los Angeles, CA 90020

NON-PROFIT ORG  
U.S. POSTAGE PAID  
LOS ANGELES, CA  
PERMIT NO. 36438

### Time Dated Material

